



JOSHUA BASIN WATER DISTRICT
REGULAR MEETING OF THE BOARD OF DIRECTORS
WEDNESDAY APRIL 18, 2012 7:00 PM
61750 CHOLLITA ROAD, JOSHUA TREE CALIFORNIA 92252

AGENDA

- | | |
|----------|---|
| | 1. CALL TO ORDER |
| | 2. PLEDGE OF ALLEGIANCE |
| | 3. DETERMINATION OF QUORUM |
| | 4. APPROVAL OF AGENDA |
| | 5. PUBLIC COMMENT: At this time, any member of the public may address the Board on matters within the Board's jurisdiction that are <u>not</u> listed on the agenda. Please use the podium microphone. The Board may not discuss at length or take action on items not on the agenda.
During either "Public Comment" Item, please use the podium microphone. State your name and have your information prepared and be ready to provide your comments to the Board. The District is interested and appreciates your comments. A 3-minute time limit may be imposed. Thank you. |
| | 6. CONSENT CALENDAR: Items on the Consent Calendar are considered routine in nature and will be adopted in total by one action of the Board of Directors unless any Board Member or any individual or organization interested in one or more consent calendar items wishes to be heard. |
| Pg 1-4 | A. <u>Approve Minutes of February 15, 2012 Regular Board Meeting</u> |
| Pg 5-7 | B. <u>Approve Minutes of March 21, 2012 Regular Board Meeting</u> |
| Pg 8-10 | C. <u>Approve Minutes of April 4, 2012 Regular Board Meeting</u> |
| Pg 11-13 | D. <u>Approve Financial Report for March 2012</u> |
| Pg 14-30 | E. <u>Approve Check Audit Report for March 2012</u> |
| | 7. RESOLUTION HONORING CONGRESSMAN JERRY LEWIS
Recommend that the Board approve Resolution 12-885. |
| | 8. RICK COOK PRESENTATION ON DISTRICT DISASTER PREPAREDNESS |
| Pg 31-86 | 9. REPLACEMENT OF UTILITY HYDRO-VACUUM
Recommend that the Board authorize the purchase of a Ditch Witch FX25 Vacuum Excavation System at a cost of approximately \$35,609.50 to be funded by the equipment replacement fund. |
| Pg 87-96 | 10. PURCHASE OF REPLACEMENT VEHICLES
Recommend that the Board authorize the purchase of three Toyota Tundras from I-10 Toyota at a cost of \$96,966; authorize the expenditure of \$102,000 from the equipment replacement fund for the purchase and customization; and authorize the sale of seven vehicles to an auction house. |

Pg 97-102

11. ELECTION OF REGULAR SPECIAL DISTRICT MEMBER OF SAN BERNARDINO COUNTY LOCAL AGENCY FORMATION COMMISSION (LAFCO)
Recommend that the Board agree to cast a vote for one of the five candidates.

Pg 103-108

12. ADOPT RESOLUTION 12-886 CONSENTING TO JOIN THE HEALTH BENEFITS PROGRAM OF THE ACWA JOINT POWERS INSURANCE AUTHORITY, RATIFYING THE ACTION OF THE ACWA HEALTH BENEFITS AUTHORITY BOARD OF DIRECTORS TO TERMINATE THE HEALTH BENEFITS AUTHORITY JOINT POWERS AGREEMENT
Recommend that the Board adopt Resolution 12-886

13. COMMITTEE REPORTS

- A. PUBLIC INFORMATION COMMITTEE: Vice President Luckman and Director Long; Kathleen Radnich, Public Outreach Consultant
- B. AD HOC GENERAL MANAGER CONTRACT NEGOTIATION COMMITTEE: President Reynolds and Director Long:
- C. AD HOC RECHARGE BASIN SITE VEGETATION: Vice President Luckman and Director Coate:
- D. AD HOC STRATEGIC PLAN COMMITTEE: Director Coate and Director Long:
- E. CITIZENS ADVISORY COMMITTEE: Jay St. Gaudens, Chair: Report on March 27, 2012 and April 10, 2012 Citizens Advisory Committee meetings.

14. PUBLIC COMMENT

At this time, any member of the public may address the Board on matters within the Board's jurisdiction that are not listed on the agenda. Please use the podium microphone. The Board may not discuss at length or take action on items not on the agenda.

15. GENERAL MANAGER REPORT

16. DISTRICT GENERAL COUNSEL REPORT

17. FUTURE AGENDA ITEMS

18. DIRECTORS COMMENTS/REPORTS

19. CLOSED SESSION

At this time the Board will go into closed session pursuant to Government Code Section 54957.6 in order for the Board to consult with and instruct the Board's Ad Hoc Negotiation Committee (Mike Reynolds and Bill Long), which is acting as the Board's designated representative and is charged with the responsibility of negotiating a new Employment Agreement with the District's General Manager.

20. ADJOURNMENT

INFORMATION

The public is invited to comment on any item on the agenda during discussion of that item.

Any person with a disability who requires accommodation in order to participate in this meeting should telephone Joshua Basin Water District at (760) 366-8438, at least 48 hours prior to the meeting in order to make a request for a disability-related modification or accommodation.

Materials related to an item on this Agenda submitted to the Board of Directors after distribution of the agenda packet are available for public inspection in the District's office located at 61750 Chollita Road, Joshua Tree, California 92252 during normal business hours.

JOSHUA BASIN WATER DISTRICT
Minutes of the
REGULAR MEETING OF THE BOARD OF DIRECTORS
February 15, 2012

1. CALL TO ORDER: 7:01 PM

2. PLEDGE OF ALLEGIANCE

3. DETERMINATION OF QUORUM:

Frank Coate	Present
Bill Long	Present
Mickey Luckman	Present
Mike Reynolds	Present
Gary Wilson	Present

STAFF PRESENT:

Joe Guzzetta, General Manager
Susan Greer, Assistant General Manager/Controller
Keith Faul, GIS Coordinator
Marie Salsberry, Executive Secretary

CONSULTANTS PRESENT: Gil Granito, District Counsel

GUESTS 5

4. APPROVAL OF AGENDA

MSC Long/Luckman 5/0 to approve the agenda for the February 15, 2012 regular meeting of the Board of Directors

5. PUBLIC COMMENT

Al Marquez of Joshua Tree commented opposing the recommendation for Item 16A of this meeting agenda: "Trip to Washington DC to Seek Funds for Groundwater Pipeline and Recharge Project".

6. CONSENT CALENDAR

MSC Luckman/Long 5/0 to approve the minutes of the February 1, 2012 Regular Board Meeting; to approve the minutes of the February 7, 2012 Special Board Meeting; to approve the Financial Report for January 2012; and to approve the Check Audit Report for January 2012.

7. CONSIDER RFP FOR AUDIT SERVICES

Assistant General Manager/Controller Susan Greer reported. The Board took the following action after lengthy discussion:

MSC Long/Coate 4/1 to direct staff to issue a request for proposals for the District's audited financial statement and to include Messner and Hadley in the request for proposals.

Coate	Aye
Long	Aye
Luckman	Aye
Reynolds	Aye
Wilson	No

8. RETAINING OF MARTIN RAUCH COMMUNICATIONS FOR ANNUAL BOARD STRATEGIC PLANNING WORKSHOP

General Manager Guzzetta reported, noting that staff would like to conduct an in-depth review of the District’s Project Priority List at a Board meeting prior to holding the Strategic Planning Workshop. Discussion ensued.

A motion was made by Vice President Luckman and seconded by Director Long to authorize an agreement with Martin Rauch and Associates in the amount of \$7,935 plus travel expenses to facilitate the Board’s annual strategic planning workshop.

Director Coate requested a roll call vote:

MSC Luckman/Long 3/2 to authorize an agreement with Martin Rauch and Associates in the amount of \$7,935 plus travel expenses to facilitate the Board’s annual strategic planning workshop

Coate	No
Long	Aye
Luckman	Aye
Reynolds	Aye
Wilson	No

9. SCHEDULE WORKSHOP FOR MID-YEAR BUDGET REVIEW AND PRIORITY UPDATE

GM Guzzetta suggested that the first board meeting in March focus on project priorities and budget available for capital projects.

MSC Luckman/Long 5/0 to schedule workshop for mid-year budget review and priority update for March 7 as part of the Regular Board meeting.

10. COMMITTEE REPORTS

- A. PUBLIC INFORMATION COMMITTEE: Vice President Luckman and Director Long; Kathleen Radnich, Public Outreach Consultant: Director Long reported that Kathleen Radnich was absent due to the snowy weather. Director Long reported for the committee, that a presentation was given by Darrel Shade of the Joshua Tree National Park Desert Institute and attended by 14 people. Director Coate reported that he attended, and stated that it was an excellent presentation on native plants.
- B. AD HOC GENERAL MANAGER PERFORMANCE FACILITATED REVIEW PROCESS: President Reynolds and Director Long: Vice President Reynolds reported that the Board is in the final stages of the review process and this will be considered in closed session tonight.
- C. AD HOC RECHARGE BASIN SITE VEGETATION: Vice President Luckman and Director Coate: GM Guzzetta reported that it was determined that the property needs to be surveyed before relocating the cacti in order to place them correctly. The survey has been ordered and is underway.

11. PUBLIC COMMENT

Al Marquez of Joshua Tree commented that he has received articles implying that importing water will affect development.

12. PROJECT PRIORITY LIST

There were no questions about the Project Priority List.

13. GENERAL MANAGER REPORT

GM reported on the status of Well 10, that all of the casing has been removed and it was noted that the casing below water level is significantly eroded. The extraction was completed today.

14. DISTRICT GENERAL COUNSEL REPORT

Legal Counsel Gil Granito stated that he had nothing newsworthy to report at this time.

GM Guzzetta requested that the Board set a date for strategic planning workshop; Mr. Granito suggested that the Board President re-open Item #8 for further discussion. Several dates were considered by the Board; the consensus of the Board was that the strategic planning workshop be held on Wednesday March 14th beginning at 8:00 am.

Mr. Granito suggested that the Board amend the earlier motion. GM Guzzetta suggested that a motion be made to reconsider the item.

MSC Luckman/Long 5/0 to reconsider the item of retaining Martin Rauch Communications for the annual Board strategic planning workshop.

Coate	Aye
Long	Aye
Luckman	Aye
Reynolds	Aye
Wilson	No

MSC Luckman/Long 3/2 to authorize an agreement with Martin Rauch and Associates in the amount of \$7,935 plus travel expenses to facilitate the Board’s annual strategic planning workshop

Coate	No
Long	Aye
Luckman	Aye
Reynolds	Aye
Wilson	No

MSC Luckman /Coate 5/0 to set date for a Board strategic planning meeting for March 14 at 8 am.

15. FUTURE AGENDA ITEMS

None.

16. DIRECTORS COMMENTS/REPORTS

Vice President Reynolds reported; discussion ensued.

MSC Long/Luckman 3/2 to authorize the President and Vice President to join the General Manager on a trip to Washington DC to meet with representatives and present our case for additional funding for the Groundwater Recharge Project.

Coate	No
Long	Aye
Luckman	Aye
Reynolds	Aye
Wilson	No

Director Wilson commented that he was contacted by a customer who stated that a member of the District's Citizens Advisory Committee was present at meeting about Cadiz and commented as a representative of the District.

Director Long reported attending a Mojave Water Agency Board meeting; the agency is working on their five year plan, and the re-districting vote took place. He commented on a 2003 proposed JBWD solar power project that was initially planned to power wells.

17. CLOSED SESSION

- A. At this time, the Board will go into Closed Session to confer with Legal Counsel on existing litigation pursuant to subdivision (a) of Government Code Section 54956.9. (Re Joshua Basin Water District v. Robert Ellis, San Bernardino Superior Court - Joshua Tree District, Case No. CIVMS 900168).
- B. At this time, the Board will go into Closed Session to confer with Legal Counsel on existing litigation pursuant to subdivision (a) of Government Code Section 54956.9. (Re Joshua Basin Water District v. Ironhead LLC a California Limited Liability Company, Praxedes Beard and Does 1 – 10 inclusive, San Bernardino Superior Court - Joshua Tree District, Case No. CIVMS 1100087).
- C. At this time, the Board will go into Closed Session pursuant to Government Code Section 54957 (b) to continue the evaluation performance process of the District's General Manager.

The Board went to closed session at 8:11 pm.

18. REPORT ON CLOSED SESSION

Mr. Granito stated that the record should reflect that at approximately 8:11 pm, the Board went into Closed Session on all closed session matters noted on tonight's agenda (Items 17 A, B, and C).

Mr. Granito reported that during the first phase of the Closed Session, the District's general Counsel gave a brief status report on the pending litigation matters noted in Items 17A and B of tonight's agenda; the Ellis litigation and the Ironhead/Prax Beard litigation. Mr. Granito stated that there was no further reportable action on these two matters and that Mr. Guzzetta had participated in this phase of the Closed Session.

Mr. Granito went on to report that the second and last phase of the Closed Session concerned Item 17 C of tonight's agenda, the performance evaluation of the District's General Manager. Mr. Granito reported that during this phase of the closed session, the Board resumed the evaluation performance process that the Board started at its February 7, 2012 Special Board Meeting and that Mr. Guzzetta did not participate in this phase of tonight's closed session. Mr. Granito concluded his open session report by stating that after deliberations, the Board had determined that the evaluation process would be suspended until sometime after the Board's Strategic Planning Workshop is concluded.

Mr. Granito concluded his report by stating that the Closed Session ended at approximately 9:00 pm and the regular session resumed.

19. ADJOURNMENT 9:05 PM

MSC Long/Luckman 5/0 to adjourn the February 15, 2012 Regular Meeting of the Board of Directors.

Respectfully submitted;

Joe Guzzetta, General Manager

The next Regular Meeting of the Board of Directors is scheduled for Wednesday March 7, 2012 at 7:00 pm.

JOSHUA BASIN WATER DISTRICT
Minutes of the
REGULAR MEETING OF THE BOARD OF DIRECTORS
March 21, 2012

1. CALL TO ORDER: 7:00 PM

2. PLEDGE OF ALLEGIANCE

3. DETERMINATION OF QUORUM:

Frank Coate	Present
Bill Long	Present
Mickey Luckman	Present
Mike Reynolds	Present
Gary Wilson	Present

STAFF PRESENT:

Joe Guzzetta, General Manager
Keith Faul, GIS Coordinator
Marie Salsberry, Executive Secretary

CONSULTANTS PRESENT:

Gil Granito, District Counsel
Kathleen Radnich, Public Outreach Consultant

GUESTS 7

4. APPROVAL OF AGENDA

MSC Luckman/Coate 5/0 to approve the agenda for the regular meeting of March 21, 2012.

5. PUBLIC COMMENT

Al Marquez commented that he believes a Director was given several items of information and asked if Director Wilson had received the information he requested.

6. CONSENT CALENDAR

MSC Luckman/Long 5/0 to approve the financial report for February 2012 and to approve the check audit report for February 2012.

7. SOLICITATION OF BIDS FOR FENCING AT GROUNDWATER RECHARGE SITE

General Manager Guzzetta reported. After discussion and public comment the Board took the following action:

MSC Luckman/Long 4/1 to concur in soliciting bids for fencing at the Groundwater Recharge Site prior to commencing construction.

Coate	Aye
Long	Aye
Luckman	Aye
Reynolds	Aye
Wilson	No

8. AGREEMENT WITH ED LA RUE FOR BIOLOGICAL SERVICES DURING CONSTRUCTION OF RECHARGE PIPELINE PROJECT

GM Guzzetta reported noting that the cost estimate is based on an hourly rate for an estimated period of time for construction. During discussion Directors commented that they would like to see this item go out to bid. GM Guzzetta explained the bidding process for public works projects and for professional services. He suggested this would be a good item for an engineering committee if the Board President chooses to appoint a committee. President Reynolds appointed Director Coate and Director Long to the Engineering Committee.

MSC Coate/Wilson 5/0 to authorize the GM to put out an RFP for bids for biological services during construction of the recharge pipeline project.

9. STATUS OF PROJECTS UNDERWAY AND FUNDS AVAILABLE FOR PROJECTS

Vice President Luckman introduced Andy Sells of the Association of California Water Agencies Joint Powers Insurance Authority; Mr. Sells gave a presentation on the ACWA JPIA.

10. COMMITTEE REPORTS

- A. PUBLIC INFORMATION COMMITTEE: Vice President Luckman and Director Long; Kathleen Radnich, Public Outreach Consultant: Ms. Radnich reported on the successful cactus transplanting at the Recharge pond site. JBWD will host the ABCs of water in November on the subject of graywater use on November 8th. A 13-minute public service presentation has been prepared on the value of tap water.
- B. AD HOC GENERAL MANAGER PERFORMANCE FACILITATED REVIEW PROCESS: President Reynolds and Director Long: Legal Counsel Gil Granito reported that the review process is 99% complete.

11. PUBLIC COMMENT

Al Marquez of Joshua Tree commented that he believed a Director collected information at a cost to the District of over \$700.

12. PROJECT PRIORITY LIST

GM Guzzetta reported that staff met with the facilitator of the strategic planning process. The facilitator is preparing a priority list in a different format; the current Project Priority List will be included in the new document.

13. GENERAL MANAGER REPORT

GM Guzzetta reported that the well has been scoured and chlorinated and will be swabbed at the end of the week; next week the new column and shaft will be inserted and a video will be taken that will show results of the cleaning and maintenance of the well.

14. DISTRICT GENERAL COUNSEL REPORT

Legal Counsel Gil Granito reported that the Yorba Linda fire case is going to trial in May and there is a lot at stake for water districts in this trial.

15. FUTURE AGENDA ITEMS

None.

16. DIRECTORS COMMENTS/REPORTS

Director Long stated he was amazed at the comment that \$700 was spent on research; that he had researched this information on his own and would provide copies of information to any other Directors who request it.

President Reynolds reported that the Board had a strategic planning meeting last Wednesday that will result in project priorities with dates. He attended the Association of San Bernardino County Special Districts meeting last night where the subject was the cost and benefits of using renewable energy.

17. CLOSED SESSION

A. Closed Session to confer with Legal Counsel on existing litigation pursuant to subdivision (a) of Government Code Section 54956.9. (Re Joshua Basin Water District v. Robert Ellis, San Bernardino Superior Court - Joshua Tree District, Case No. CIVMS 900168).

B. Closed Session to confer with Legal Counsel on existing litigation pursuant to subdivision (a) of Government Code Section 54956.9. (Re Joshua Basin Water District v. Ironhead LLC a California Limited Liability Company, Praxedes Beard and Does 1 – 10 inclusive, San Bernardino Superior Court - Joshua Tree District, Case No. CIVMS 1100087).

The Board went to closed session at 8:40 and open session resumed at 8:55 pm.

18. REPORT ON CLOSED SESSION

Legal Counsel Gil Granito reported that during the closed session he updated the Board on the status of Item 17A, the Ellis litigation. Regarding Item B of the closed session Mr. Granito reported that the Board had concluded the General Manager performance evaluation and President Reynolds had appointed a committee of Director Long and Director Coate to negotiate for a new contract between the District and the General Manager.

19. ADJOURNMENT 9:00 PM

Respectfully submitted;

Joe Guzzetta, General Manager

The next Regular Meeting of the Board of Directors is scheduled for Wednesday April 4, 2012 at 7:00 pm.

JOSHUA BASIN WATER DISTRICT
Minutes of the
REGULAR MEETING OF THE BOARD OF DIRECTORS
April 4, 2012

1. **CALL TO ORDER: 7:02 PM**

2. **PLEDGE OF ALLEGIANCE**

3. **DETERMINATION OF QUORUM:**

Frank Coate	Present
Bill Long	Present
Mickey Luckman	Present
Mike Reynolds	Present
Gary Wilson	Present

STAFF PRESENT: Joe Guzzetta, General Manager
Keith Faul, GIS Coordinator
Marie Salsberry, Executive Secretary

CONSULTANTS PRESENT: Gil Granito, District Counsel
Kathleen Radnich, Public Outreach Consultant

GUESTS 8

4. **APPROVAL OF AGENDA**

MSC Luckman/Long 5/0 to approve the agenda for the regular meeting of April 4, 2012.

5. **PUBLIC COMMENT**

None.

6. **CONSENT CALENDAR**

MSC Luckman/Coate 5/0 to approve the minutes of the March 7, 2012 Regular Board meeting and to approve the minutes of the March 14, 2012 Special Board meeting.

7. **RICK COOK PRESENTATION: DISTRICT DISASTER PREPAREDNESS**

This item was continued to the April 18 Board meeting.

COMMITTEE REPORTS:

- A. PUBLIC INFORMATION COMMITTEE: Vice President Luckman and Director Long; Kathleen Radnich, Public Outreach Consultant : Ms. Radnich reported 2 new garden docents have been recruited. April is Earthquake Preparedness Month; handouts for emergency water preparation are available at the Farmers Market.
- B. AD HOC GENERAL MANAGER CONTRACT NEGOTIATION COMMITTEE: President Reynolds and Director Long: No report.
- C. AD HOC RECHARGE BASIN SITE VEGETATION: Vice President Luckman and Director Coate: GM Guzzetta reported that there are several Joshua trees at the recharge site; some can be relocated on the site and some are not suitable for transplanting there. Conservation Consultant Deb Bollinger also reported, explaining that the trees are over ten feet tall.

MSC Wilson/Coate 5/0 to concur with removing 15 Joshua trees at the ground water recharge site, relocating 10 of those onsite, at a cost of approximately \$4,500 with work to be performed by Unique Landscape and Cactus Nursery, and relinquishing five of the trees to Unique Nursery, in the Fall of 2012.

- D. ENGINEERING COMMITTEE: Director Coate and Director Long; Legal Counsel Gil Granito explained how Board ad hoc committees and standing committees work. President Reynolds appointed Director Long and Director Coate to an Ad Hoc Strategic Planning Committee to work with staff and consultants in providing input and developing the strategic plan; the committee will be dissolved when that task is completed.

9. PUBLIC COMMENT

None.

10. GENERAL MANAGER REPORT

GM Guzzetta reported that Well 10 renovation has been completed; water quality testing is being done and the well will be online soon. District employee Steve Corbin fabricated a piece for the well pipe that will allow some flexibility; he did an outstanding job. Water Distribution Supervisor Randy Little was the project manager. The general manager reported on meter reading and explained the process from remote reading of the meters and analyzing the data to be sure billing is correct.

Staff is evaluating 1.5 and larger meters to see how often they need to be tested and whether or not they need bypasses installed in order to perform testing. Staff is working on emergency alternative water supply for the hospital and county buildings and a long term solution for a redundant water supply.

Field and office staff are working on the budget and strategic plan.

The finance team is making arrangements to convert checks written by customers' banks or bill pay services to be received by the District electronically. They are also making arrangements with County tax collector for electronic payment rather than hard checks.

General Manager Guzzetta reported on the status of several projects.

11. DISTRICT GENERAL COUNSEL REPORT

District Counsel reported that an amendment to the Hi-Desert Medical Center may be brought to the Board in the future.

12. FUTURE AGENDA ITEMS

None.

13. DIRECTORS COMMENTS/REPORTS

Director Coate reported attending the Mojave Water Agency Board meeting; two projects drew bids that were over the engineering estimates; one will be put out to bid again. A quick-thinking employee put out a flyer on a stolen item and it was located due to this employee's actions.

Director Long addressed a comment made by a member of the public at the last Board meeting regarding copying of DVD recordings.

Vice President Luckman commented that she will attend the Mojave Water Agency Technical Advisory Committee meeting tomorrow.

President Reynolds reported on phone calls he received from contractors who were considering bidding on the H Tank grading project and who had questions about the project.

President Reynolds re-opened Public Comment.

Al Marquez of Joshua Tree commented on earlier statements by Director Long, and stated that in 2008 some Directors were supported by the Building Industry Association.

14. ADJOURNMENT 8:30 PM

MSC Luckman/Coate 5/0 to adjourn the April 4, 2012 regular meeting of the Board of Directors.

Respectfully submitted;

Joe Guzzetta, General Manager

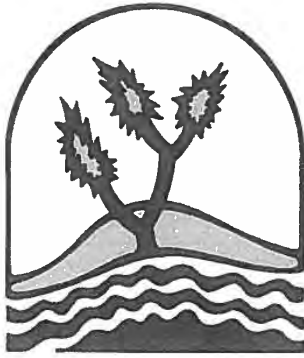
The next Regular Meeting of the Board of Directors is scheduled for Wednesday April 18, 2012 at 7:00 pm.

DRAFT

	BEGINNING BALANCE	TOTAL DEBITS	TOTAL CREDITS	ENDING BALANCE	AVERAGE DAILY BALANCE
GENERAL FUND					
01 -11100	PETTY CASH FUND	600.00	0.00	600.00	600.00
01 -11110	CHANGE FUND	1,500.00	0.00	1,500.00	1,500.00
01 -11200	GENERAL FUND-U S	152,178.56	20.00	147,788.89	147,788.89
01 -11210	PAYROLL FUND - U	5,000.00	0.00	5,000.00	5,000.00
01 -11220	CREDIT CARD ACCO	52,763.38	0.00	51,959.35	51,959.35
01 -11300	LAIF-INVESTMENT	1,467,162.27	0.00	1,467,162.27	1,467,162.27
01 -11305	LAIF-EMERGENCY F	1,000,000.00	0.00	1,000,000.00	1,000,000.00
01 -11306	LAIF - EQUIP & T	293,843.56	0.00	293,843.56	293,843.56
01 -11307	LAIF - OPPORTUNI	2,000,000.00	0.00	2,000,000.00	2,000,000.00
01 -11310	LAIF - WATER CAP	77,012.82CR	0.00	77,012.82CR	77,012.82CR
01 -11313	LAIF - SEWER CAP	112,816.71	0.00	112,816.71	112,816.71
01 -11315	LAIF-CAPITAL PRO	0.00	0.00	0.00	0.00
01 -11320	LAIF- CMM REDEMP	246,076.40	0.00	246,076.40	246,076.40
01 -11325	LAIF - CMM RESER	273,036.06	0.00	273,036.06	273,036.06
01 -11330	LAIF CMM PREPAYM	2,958.86	0.00	2,958.86	2,958.86
FUND 01 TOTAL		5,530,922.98	20.00	5,213.70CR	5,525,729.28
REPORT TOTALS		5,530,922.98	20.00	5,213.70CR	5,525,729.28

✓

Handwritten signature



JOSHUA BASIN WATER DISTRICT

P.O. BOX 675 • 61750 CHOLLITA ROAD • JOSHUA TREE • CALIFORNIA 92252
 TELEPHONE (760) 366-8438 FAX (760) 366-9528

Cash Flow

March 31, 2012

Beginning Cash			5,517,161.35
SOURCE OF FUNDS:			
Water A/R Collections	238,883.46		
Turn On/Misc	3,307.12		
Consumer Deposits	6,200.00		
Project Deposits	0.00		
Property Taxes G.D.	22,139.94		
ID #2 Tax Collections	8,835.08		
Standby Collections - Prior	5,399.72		
Standby Collections - Current	40,320.54		
CMM Assessment Collections	16,727.59		
LAIF CMM Payoff	0.00		
Water Capacity Charges	0.00		
Sewer Capacity Charges	0.00		
Meter Installation Fees	0.00		
Interest	0.00		
TOTAL SOURCE OF FUNDS		<u>341,813.45</u>	
FUNDS USED:			
Debt Service	0.00		
Capital Additions	40,148.96		
Operating Expenses	126,820.81		
Employee Funded 457 Transfer	3,458.08		
Bank Transfer Payroll Taxes	32,089.23		
CalPERS Transfer	18,929.45	221,446.53	
Bank Transfer Payroll	110,043.37		
Bank Transfer Fees/Charges	1,755.62	111,798.99	
TOTAL USE OF FUNDS		<u>333,245.52</u>	
Net Increase (Decrease)			8,567.93
Cash Balance at End of Period			<u>5,525,729.28</u>

PROVIDE • PROTECT • PROMOTE

JOSHUA BASIN WATER DISTRICT
 BOARD REPORT
 AS OF: MARCH 31ST, 2012

01 -GENERAL FUND
 FINANCIAL SUMMARY

% OF YEAR COMPLETED: 75.00

	CURRENT BUDGET	CURRENT PERIOD	YEAR TO DATE ACTUAL	TOTAL ENCUMBERED	BUDGET BALANCE	% YTD BUDGET
<u>REVENUE SUMMARY</u>						
REVENUES	4,714,640	(218,200.48)	3,941,399.53	0.00	773,240.47	83.60
TOTAL REVENUES	4,714,640	(218,200.48)	3,941,399.53	0.00	773,240.47	83.60
<u>EXPENSE SUMMARY</u>						
Production	854,867	67,863.11	574,620.88	0.00	280,246.12	67.22
Distribution	508,987	43,647.53	345,802.48	0.00	163,184.52	67.94
Customer Service	556,812	51,267.02	388,479.16	0.00	168,332.84	69.77
Administration	554,083	52,391.58	400,107.08	0.00	153,975.92	72.21
Engineering	219,677	16,302.09	118,481.59	0.00	101,195.41	53.93
Finance	410,971	39,565.89	300,285.02	0.00	110,685.98	73.07
Personnel	85,494	5,155.58	48,284.27	0.00	37,209.73	56.48
Legal	68,666	10,309.40	69,828.96	0.00	(1,162.96)	101.69
Bonds & Loans	612,979	2,151.89	370,328.20	0.00	242,650.80	60.41
Benefits Allocated	0	0.00	0.00	0.00	0.00	0.00
Field Allocated	(28,788)	0.00	(18,384.31)	0.00	(10,403.69)	63.86
Office allocated	28,788	0.00	18,384.30	0.00	10,403.70	63.86
TOTAL EXPENSES	3,872,536	288,654.09	2,616,217.63	0.00	1,256,318.37	67.56
REVENUE OVER/(UNDER) EXPENSES	842,104	(506,854.57)	1,325,181.90	0.00	(483,077.90)	157.37

CHECK NO	CHECK DATE	STATUS	VENDOR INFO		CHECK AMOUNT
051064	3/02/2012	R	001002	BUSINESS CARD	
			I-BA0312	BUSINESS EXPENSE/BUILDING REPR	101.79

					101.79
051065	3/02/2012	R	001004	BUSINESS CARD	
			I-BA0312	TRN EXP/OFFICE SUP/PUBLIC INFO	1,483.45

					1,483.45
051066	3/02/2012	R	000158	WILLIAM E. MURRAY	
			I-022712	WATER RECHARGE POND SURVEY	6,275.00

					6,275.00
051067	3/02/2012	R	004110	BURRTEC WASTE & RECYCLING SVCS	
			I-BW0312	RECYCLING - MARCH 12	54.63
			I-BW0312B	TRASH REMOVAL - MAR 12	248.81
			I-BW0312C	TRASH REMOVAL - MAR 12	79.92

					383.36
051068	3/02/2012	R	000145	CALIFORNIA STATE DISBURSEMENT UNIT	
			I-030212	EE REMITTANCE	198.92

					198.92
051069	3/02/2012	R	001530	CARQUEST/SOUTHERN AUTO SUPPLY	
			I-7340-397998	VEHICLE REPAIR	28.17
			I-7340-397999	VEHICLE REPAIR	25.85

					54.02
051070	3/02/2012	R	002565	DUDEK AND ASSOCIATES, INC	
			I-20120070	ENG SERV: RECHARGE GRANT	7,198.21

					7,198.21
051071	3/02/2012	R	004720	INLAND WATER WORKS	
			I-239886	INVENTORY/FIRE HYDRANT REPAIR	977.62

					977.62
051072	3/02/2012	R	005025	JERNIGAN'S SPORTING GOODS	
			I-28423	UNIFORMS	226.28

					226.28
051073	3/02/2012	R	006029	LIEBERT CASSIDY WHITMORE	
			I-146172	LEGAL SERVICES - JAN 12	870.00

					870.00

CHECK NO	CHECK DATE	STATUS	VENDOR INFO		CHECK AMOUNT
051074	3/02/2012	R	009897	THE MALLANTS CORPORATION	
			I-2448	TEMPORARY LABOR	840.17
			I-2451	TEMPORARY LABOR	595.56

					1,435.73
051075	3/02/2012	R	006200	HELEN A. MCALLISTER	
			I-5632B	JANITORIAL SERVICES - FEB 12	580.00

					580.00
051076	3/02/2012	R	006790	MOBILE MINI, LLC - CA	
			I-941542932	23' RECORD STORAGE RENTAL	226.71

					226.71
051077	3/02/2012	R	008415	PRUDENTIAL OVERALL SPLY.	
			I-20465281	SHOP EXPENSE	82.52
			I-20472908	SHOP EXPENSE	120.97

					203.49
051078	3/02/2012	R	000042	ROMAN, ANNE	
			I-AR022312	REIMB: MILES TO ETHICS SEMINAR	58.61

					58.61
051079	3/02/2012	R	009898	THE GAS COMPANY	
			I-GAS0212	HEAT FOR SHOP - JAN/FEB 12	482.88

					482.88
051080	3/02/2012	R	010990	UTILIQUEST L.L.C.	
			I-179596-Q	CONTRACT LOCATING EXPENSE	281.15

					281.15
051081	3/08/2012	R	1	CUSTOMER REFUNDS (MISC.)	
			I-000201203061573	HUNTER, LISA :US REFUND	40.26

					40.26
051082	3/08/2012	R	1	CUSTOMER REFUNDS (MISC.)	
			I-000201203071574	PARIS, TARA :US REFUND	39.09

					39.09
051083	3/08/2012	R	1	CUSTOMER REFUNDS (MISC.)	
			I-000201203071575	LAUER, HEATHER :US REFUND	45.19

					45.19

CHECK NO	CHECK DATE	STATUS		VENDOR INFO	CHECK AMOUNT
051084	3/08/2012	R	1	CUSTOMER REFUNDS (MISC.)	
				I-000201203071576 CHAFFER, MARGARET :US REFUND	26.95

					26.95
051085	3/08/2012	R	1	CUSTOMER REFUNDS (MISC.)	
				I-000201203071577 BRACERO, JOSUE :US REFUND	47.84

					47.84
051086	3/08/2012	R	1	CUSTOMER REFUNDS (MISC.)	
				I-000201203071578 ROSSA, STEVEN J :US REFUND	62.86

					62.86
051087	3/08/2012	R	1	CUSTOMER REFUNDS (MISC.)	
				I-000201203071579 GARVEY, MARCELL :US REFUND	77.22

					77.22
051088	3/08/2012	R	1	CUSTOMER REFUNDS (MISC.)	
				I-000201203071580 STEVENSON, KENNETH :US REFUND	71.90

					71.90
051089	3/08/2012	R	1	CUSTOMER REFUNDS (MISC.)	
				I-000201203071581 HERNANDEZ, ANTHONY :US REFUND	34.20

					34.20
051090	3/08/2012	R	1	CUSTOMER REFUNDS (MISC.)	
				I-000201203071582 AYRES, ROY :US REFUND	84.50

					84.50
051091	3/08/2012	R	1	CUSTOMER REFUNDS (MISC.)	
				I-000201203071583 JIMENEZ, JERRY :US REFUND	66.90

					66.90
051092	3/08/2012	R	1	CUSTOMER REFUNDS (MISC.)	
				I-000201203071584 SMITH, ROHAN :US REFUND	51.01

					51.01
051093	3/08/2012	R	1	CUSTOMER REFUNDS (MISC.)	
				I-000201203071585 BARNETT, CHARLES JR. :US REFUND	51.37

					51.37

CHECK NO	CHECK DATE	STATUS	VENDOR INFO		CHECK AMOUNT
051094	3/08/2012	R	1	CUSTOMER REFUNDS (MISC.) I-000201203071586 ABSOLOR, DIANA J. :US REFUND	72.76 ----- 72.76
051095	3/08/2012	R	1	CUSTOMER REFUNDS (MISC.) I-000201203071587 LANSFORD, VICTORIA H:US REFUND	1.29 ----- 1.29
051096	3/08/2012	R	1	CUSTOMER REFUNDS (MISC.) I-000201203071588 WALTER, ROBIN T :US REFUND	51.57 ----- 51.57
051097	3/08/2012	R	1	CUSTOMER REFUNDS (MISC.) I-000201203071589 WALLEN, BREE :US REFUND	35.70 ----- 35.70
051098	3/08/2012	R	1	CUSTOMER REFUNDS (MISC.) I-000201203071590 PROULX, STEVEN :US REFUND	22.19 ----- 22.19
051099	3/08/2012	R	1	CUSTOMER REFUNDS (MISC.) I-000201203071591 LIFETIME INDUSTRIES :US REFUND	74.98 ----- 74.98
051100	3/08/2012	R	000063	TARIK ASSAGAL I-3330 ANNUAL WEBSITE HOSTING	180.00 ----- 180.00
051101	3/08/2012	R	000505	ACWA I-ACWA0412 EE ASSISTANCE PROGRAM APR 12	67.26 ----- 67.26
051102	3/08/2012	R	000507	ACWA HEALTH BENEFITS AUTHORITY I-ACWA0412 EE HEALTH BENEFIT - APR 12	10,761.91 ----- 10,761.91
051103	3/08/2012	R	000501	ACWA/JPIA I-JPIA030712 PROPERTY INSURANCE 4/12-4/13	21,239.00 ----- 21,239.00

CHECK NO	CHECK DATE	STATUS	VENDOR INFO		CHECK AMOUNT
051104	3/08/2012	R	001526	CANYON AUTO SERVICES, INC	
			I-6404	VEHICLE REPAIRS	113.09

					113.09
051105	3/08/2012	R	001555	CENTRATTEL	
			I-120303192101	DISPATCH SERVICES - FEB 12	307.88

					307.88
051106	3/08/2012	R	001595	CHEM-TECH INTERNATIONAL, INC.	
			I-JBWD146	WATER TREATMENT EXPENSE	808.34

					808.34
051107	3/08/2012	R	003015	EUGENE K FAUL	
			I-KF030212	REIMB: OFFICE SUPPLIES	78.04

					78.04
051108	3/08/2012	R	000058	GARDA CL WEST, INC.	
			I-178-379612	COURIER FEES - MAR 12	440.60

					440.60
051109	3/08/2012	R	003505	LORI PARKER	
			I-5898	STORAGE BARRELS	226.28

					226.28
051110	3/08/2012	R	001006	SUSAN GREER	
			I-SG030212	REIMB: FOOD & MILES	177.56

					177.56
051111	3/08/2012	R	004152	HI-DESERT STAR	
			I-549895	PUBLIC NOTICE: H1 GRADING RFQ	87.78

					87.78
051112	3/08/2012	R	004720	INLAND WATER WORKS	
			I-240045	INVENTORY	383.27

					383.27
051113	3/08/2012	R	005621	KENNY STRICKLAND, INC	
			I-2055025	FUEL FOR VEHICLES	3,825.23
			I-2055026	FUEL FOR VEHICLES	438.87

					4,264.10

CHECK NO	CHECK DATE	STATUS	VENDOR INFO		CHECK AMOUNT
051114	3/08/2012	R	005870	KRIEGER & STEWART INC.	
			I-35044	ENGINEERING SERVICES: RECHARGE	10,000.00

					10,000.00
051115	3/08/2012	R	006507	McMASTER-CARR SUPPLY COMPANY	
			I-19188183	PUMPING PLANT SUPPLIES	163.01

					163.01
051116	3/08/2012	R	000070	ONLINE INFORMATION SERVICES, INC.	
			I-398167	ID VERIF. SERV. THRU 2/29/12	246.50

					246.50
051117	3/08/2012	R	008150	PETTY CASH, SUSAN GREER	
			I-PC030712	PETTY CASH REIMBURSEMENT	304.48

					304.48
051118	3/08/2012	R	008202	PITNEY BOWES	
			I-393062	OFFICE SUPPLIES	226.33

					226.33
051119	3/08/2012	R	008405	PRECISION ASSEMBLY	
			I-14834	FEB WATER BILLING & PUBL INFO	1,828.14

					1,828.14
051120	3/08/2012	R	008414	ROBERT L. STEPHENSON	
			I-1135	VIDEO TAPING BD MEETINGS - FEB	200.00

					200.00
051121	3/08/2012	R	009054	KATHLEEN J. RADNICH	
			I-22612-7	PUBLIC RELATIONS SERVICES	446.40

					446.40
051122	3/08/2012	R	009065	RDO EQUIPMENT COMPANY	
			I-W19499	JD 710G REPAIRS	4,625.57

					4,625.57
051123	3/08/2012	R	009072	LAW OFFICES REDWINE AND SHERRILL	
			C-RS0212CR	RAUCH COMMUNICATION DEPOSIT	3,075.00CR
			I-RS0212	LEGAL SERVICES - FEB 12	14,093.74

					11,018.74

CHECK NO	CHECK DATE	STATUS	VENDOR INFO		CHECK AMOUNT
051124	3/08/2012	V	C-CHECK	VOID CHECK	0.00

					0.00
051125	3/08/2012	R	009615	MARIE SALSBERY	
			I-MS030512	REIMB: MILEAGE & MEALS	194.81

					194.81
051126	3/08/2012	R	009878	SOUTHERN CALIFORNIA EDISON	
			I-SCE0212	POWER FOR PUMPING - FEB 12	20,642.92

					20,642.92
051127	3/08/2012	R	010850	UNDERGROUND SERVICE ALERT	
			I-220120329	TICKET DELIVERY SERVICE - FEB	69.00

					69.00
051128	3/08/2012	R	010990	UTILIQUEST L.L.C.	
			I-179892-Q	CONTRACT LOCATING EXPENSE	93.90

					93.90
051129	3/08/2012	R	011101	VAGABOND WELDING SUPPLY	
			I-85444	SHOP EXPENSE	265.60

					265.60
051130	3/13/2012	R	1	CUSTOMER REFUNDS (MISC.)	
			I-000201203131592	JEFFERIES, APRIL :US REFUND	96.75

					96.75
051131	3/13/2012	R	1	CUSTOMER REFUNDS (MISC.)	
			I-000201203131593	WALKER, VALERIE :US REFUND	58.33

					58.33
051132	3/13/2012	R	1	CUSTOMER REFUNDS (MISC.)	
			I-000201203131594	LUND, CRYSTAL :US REFUND	60.72

					60.72
051133	3/16/2012	R	001630	AT&T MOBILITY	
			I-829480028X03052012	COMMUNICATIONS - FEB 12	933.64

					933.64

CHECK NO	CHECK DATE	STATUS	VENDOR INFO		CHECK AMOUNT
051134	3/16/2012	R	001461	DEBORAH BOLLINGER	
			I-487	WATER CONSERVATION - FEB 12	2,500.00
			I-488	CONSULTING SERVICES - FEB 12	2,962.50

					5,462.50
051135	3/16/2012	R	000145	CALIFORNIA STATE DISBURSEMENT UNIT	
			I-031612	EE REMITTANCE	198.92

					198.92
051136	3/16/2012	R	001526	CANYON AUTO SERVICES, INC	
			I-6401	VEHICLE REPAIRS	905.99

					905.99
051137	3/16/2012	R	001865	COMPUTER GALLERY	
			I-306238	OFFICE EQUIPMENT	63.08

					63.08
051138	3/16/2012	R	004195	HOME DEPOT CREDIT SERVICES	
			I-HD0312	RECHRG PND/PUMP PLNT/SHOP EXP	1,239.73

					1,239.73
051139	3/16/2012	R	009897	THE MALLANTS CORPORATION	
			I-2453	TEMPORARY LABOR	850.80

					850.80
051140	3/16/2012	V	006810	MOJAVE DESERT AQMD	
			I-28363	PERMIT FEE - GENERATOR	261.07

					261.07
051141	3/16/2012	R	000159	OASIS OFFICE SUPPLY	
			I-205466-0	SHIPPING - BERKELEY SPRINGS	198.74

					198.74
051142	3/16/2012	R	008102	OFFICEMAX CONTRACT INC.	
			I-898025	OFFICE SUPPLIES/SHOP EXPENSE	1,169.01

					1,169.01
051143	3/16/2012	R	008415	PRUDENTIAL OVERALL SPLY.	
			I-20480227	SHOP EXPENSE	83.90

					83.90

CHECK NO	CHECK DATE	STATUS	VENDOR INFO		CHECK AMOUNT
051144	3/16/2012	R	009054	KATHLEEN J. RADNICH I-30412-9 PUBLIC RELATIONS SERVICES	507.60 ----- 507.60
051145	3/16/2012	R	009920	STANDARD INSURANCE CO I-ST0312 EE LIFE INSURANCE - MAR 12	708.77 ----- 708.77
051146	3/16/2012	R	010635	TOPS N BARRICADES I-1025999 SAFETY EXPENSE	1,794.04 ----- 1,794.04
051147	3/16/2012	R	010690	TYLER TECHNOLOGIES I-025-36155 INSITE TRANS FEES: OCT-DEC	1,506.25 ----- 1,506.25
051148	3/16/2012	R	010990	UTILIQUEST L.L.C. I-180120-Q CONTRACT LOCATING EXPENSE	58.12 ----- 58.12
051149	3/16/2012	R	003595	VERIZON CALIFORNIA I-V0312 TELEPHONE (SHOP) - MAR 12	337.09 ----- 337.09
051150	3/16/2012	R	011615	WESTERN EXTERMINATOR CO. I-WE0212 EXTERMINATOR - FEB 12 I-WE0212B EXTERMINATOR - FEB 12	73.50 32.00 ----- 105.50
051151	3/16/2012	R	012955	YUCCA RENTALS I-79006 EQUIPMENT RENTAL	422.40 ----- 422.40
051152	3/22/2012	R	001526	CANYON AUTO SERVICES, INC I-6433 VEHICLE REPAIRS I-6439 VEHICLE REPAIRS	105.22 90.50 ----- 195.72
051153	3/22/2012	R	001850	CLINICAL LAB OF S.B. INC I-920089 SAMPLING - FEB 12	696.00 ----- 696.00

CHECK NO	CHECK DATE	STATUS	VENDOR INFO		CHECK AMOUNT
051154	3/22/2012	R	001865	COMPUTER GALLERY	
			I-306369	PLAT. MAINTENANCE - APR 12	2,895.00
			I-306414	BDR BACKUP SERVICE - APR 12	1,010.00

					3,905.00
051155	3/22/2012	R	002026	DATASTREAM	
			I-4568	MAINT. AGREEMENT - 2ND QTR 12	720.00

					720.00
051156	3/22/2012	R	002565	DUDEK AND ASSOCIATES, INC	
			I-20114346	ENG SERV: RECHARGE/HZONE TANK	3,655.00
			I-20120230	ENG SERV: RESV LAND/DIST FEES	4,740.00

					8,395.00
051157	3/22/2012	R	004720	INLAND WATER WORKS	
			I-240377	WELL 10 SUPPLIES	3,288.86

					3,288.86
051158	3/22/2012	R	009897	THE MALLANTS CORPORATION	
			I-2458	TEMPORARY LABOR	866.75
			I-2459	TEMPORARY LABOR	808.26

					1,675.01
051159	3/22/2012	R	006507	MCMASTER-CARR SUPPLY COMPANY	
			I-20475366	METER REPAIR/ SMALL TOOLS	948.82

					948.82
051160	3/22/2012	R	003930	NBS	
			I-3201200068	CMM ADMIN FEES - 2ND QTR 12	2,074.99

					2,074.99
051161	3/22/2012	R	000159	OASIS OFFICE SUPPLY	
			I-205939-0	REPRO: HDMC SECONDARY PIPELINE	15.47

					15.47
051162	3/22/2012	R	009065	RDO EQUIPMENT COMPANY	
			I-P36686	JD 710G & JD 410 REPAIRS	346.83
			I-P37755	JD 410 & JD 710G REPAIRS	1,030.98

					1,377.81
051163	3/22/2012	R	009880	SOUTHERN CALIFORNIA EDISON CO	

CHECK NO	CHECK DATE	STATUS	VENDOR INFO		CHECK AMOUNT
			I-SCE0312	POWER TO BUILDINGS - MAR 12	1,204.30

					1,204.30
051164	3/22/2012	R	000510	TIME WARNER CABLE	
			I-TW0312	CABLE SERVICE - MAR 12	58.32

					58.32
051165	3/22/2012	R	010690	TYLER TECHNOLOGIES	
			I-025-39714	ONLINE PRODUCTS - MAR 12	185.00

					185.00
051166	3/22/2012	R	010990	UTILIQUEST L.L.C.	
			I-180362-Q	CONTRACT LOCATING EXPENSE	134.05

					134.05
051167	3/22/2012	R	003600	VERIZON CALIFORNIA	
			I-V0312	TELEPHONE (OFFICE) - MAR 12	724.34

					724.34
051168	3/28/2012	R	1	CUSTOMER REFUNDS (MISC.)	
			I-000201203271595	BOBISH, BRYAN L :US REFUND	51.18

					51.18
051169	3/28/2012	R	1	CUSTOMER REFUNDS (MISC.)	
			I-000201203271596	WILLOW TREE REALTY :US REFUND	81.98

					81.98
051170	3/28/2012	R	1	CUSTOMER REFUNDS (MISC.)	
			I-000201203271597	FRIGOLA, JON M :US REFUND	52.78

					52.78
051171	3/28/2012	R	1	CUSTOMER REFUNDS (MISC.)	
			I-000201203271598	SANCHEZ, MARIE :US REFUND	18.85

					18.85
051172	3/28/2012	R	1	CUSTOMER REFUNDS (MISC.)	
			I-000201203271599	JOHNSON, CHRISTOPHER:US REFUND	37.38

					37.38
051173	3/28/2012	R	1	CUSTOMER REFUNDS (MISC.)	

CHECK NO	CHECK DATE	STATUS	VENDOR INFO		CHECK AMOUNT
			I-000201203271600	BLACKWOOD, RHULIN LE:US REFUND	13.47

					13.47
051174	3/28/2012	R 1		CUSTOMER REFUNDS (MISC.)	
			I-000201203271601	WEST, CATLIN N :US REFUND	44.04

					44.04
051175	3/28/2012	R 1		CUSTOMER REFUNDS (MISC.)	
			I-000201203271602	QUINTANA, MARC :US REFUND	50.39

					50.39
051176	3/28/2012	R 1		CUSTOMER REFUNDS (MISC.)	
			I-000201203271603	HENRY, SHAWNTAY :US REFUND	113.13

					113.13
051177	3/28/2012	R 1		CUSTOMER REFUNDS (MISC.)	
			I-000201203271604	COWLIN, LISA :US REFUND	21.38

					21.38
051178	3/28/2012	R 1		CUSTOMER REFUNDS (MISC.)	
			I-000201203271605	KNIGHT, GEORGE & MAR:US REFUND	4.64

					4.64
051179	3/30/2012	R	000575	AFSCME LOCAL 1902	
			I-AFSCME0312	EE UNION DUES - MAR 12	468.00

					468.00
051180	3/30/2012	R	000656	AMERICAN HERITAGE LIFE INS CO.	
			I-ALLO212	EE LIFE INSURANCE - FEB 12	304.89

					304.89
051181	3/30/2012	R	000210	AMERICAN CASTING & MANUFACTURING CORPORATION	
			I-203776	METER LOCKING DEVICES	1,046.03

					1,046.03
051182	3/30/2012	R	000145	CALIFORNIA STATE DISBURSEMENT UNIT	
			I-033012	EE REMITTANCE	198.92

					198.92
051183	3/30/2012	R	001528	CARPI & CLAY, INC	

CHECK NO	CHECK DATE	STATUS	VENDOR INFO		CHECK AMOUNT
			I-CC0212	LOBBYIST - FEB 12	3,500.00

					3,500.00
051184	3/30/2012	R	002190	CDPH-OCF	
			I-1250458	WATER SYSTEM FEES 7/11-12/11	441.00

					441.00
051185	3/30/2012	R	002565	DUDEK AND ASSOCIATES, INC	
			I-20120603	RECHARGE GRANT APPLICATION	1,200.00

					1,200.00
051186	3/30/2012	R	003015	EUGENE K FAUL	
			I-KF032812	REIMB: POSTAGE/OFFICE SUPPLIES	33.88

					33.88
051187	3/30/2012	R	001006	SUSAN GREER	
			I-SG032912	REIMB: OFFICE SUPPLIES	71.89

					71.89
051188	3/30/2012	R	004720	INLAND WATER WORKS	
			I-240509	MAINLINE & LEAK REPAIR SUPPLY	137.92

					137.92
051189	3/30/2012	R	006029	LIEBERT CASSIDY WHITMORE	
			I-147332	LEGAL SERVICES - FEB 12	1,046.90

					1,046.90
051190	3/30/2012	R	009897	THE MALLANTS CORPORATION	
			I-2464	TEMPORARY LABOR	850.80

					850.80
051191	3/30/2012	R	006200	HELEN A. MCALLISTER	
			I-5645B	JANITORIAL SERVICES - MAR 12	580.00

					580.00
051192	3/30/2012	R	006507	McMASTER-CARR SUPPLY COMPANY	
			C-20900922	PUMPING PLANT SUPPLIES	163.01CR
			I-21245086	METER REPAIR	103.84
			I-21249087	SHOP EXPENSE	153.67

					94.50

CHECK NO	CHECK DATE	STATUS	VENDOR INFO		CHECK AMOUNT
051193	3/30/2012	R	000159	OASIS OFFICE SUPPLY I-206022-0 MAPS: D3 BOOSTER/HDMC 2ND PIPE	42.80 ----- 42.80
051194	3/30/2012	R	008415	PRUDENTIAL OVERALL SPLY. I-20486893 SHOP EXPENSE	83.90 ----- 83.90
051195	3/30/2012	R	009054	KATHLEEN J. RADNICH I-31812-11 PUBLIC RELATIONS SERVICES	450.00 ----- 450.00
051196	3/30/2012	R	009920	STANDARD INSURANCE CO I-ST0412 EE LIFE INSURANCE - APR 12	792.87 ----- 792.87
051197	3/30/2012	R	010900	HD SUPPLY FACILITIES MAINTENANCE, LTD. DBA I-625551 SMALL TOOLS I-626250 SMALL TOOLS	91.22 1,197.65 ----- 1,288.87
051198	3/30/2012	R	010990	UTILIQUEST L.L.C. I-180591-Q CONTRACT LOCATING EXPENSE	71.56 ----- 71.56
*900237	3/05/2012	D	004800	INTERNAL REVENUE SERVICE I-IRS PD 3/2/12 FED W/H, SOC SEC, MEDICARE	13,558.19 ----- 13,558.19
900238	3/05/2012	D	002822	EMPLOYMENT DEVELOPMENT I-EDD PD 3/02/12 STATE & SDI W/H	2,648.26 ----- 2,648.26
900239	3/05/2012	D	001517	CalPERS I-PPE 2-24-12 PAY PERIOD ENDING 2/24/12	9,409.17 ----- 9,409.17
900240	3/19/2012	D	004800	INTERNAL REVENUE SERVICE I-IRS PD 3-16-12 FED W/H, SOC SEC, MEDICARE	13,291.40 ----- 13,291.40

CHECK NO	CHECK DATE	STATUS	VENDOR INFO		CHECK AMOUNT
900241	3/19/2012	D	002822	EMPLOYMENT DEVELOPMENT	
			I-EDD PD 3/16/12	STATE & SDI W/H	2,591.38

					2,591.38
900242	3/19/2012	D	001517	CalPERS	
			I-PPE 3-9-12	PAY PERIOD ENDING 3/9/12	9,520.28

					9,520.28
*900246	3/31/2012	D	000025	ICMA RC	
			I-900246	457 REMITTANCE - MAR 12	3,458.08

					3,458.08
TOTALS:	142				221,747.86
			LESS - PRIOR MONTH VOIDS:		
				51012	(40.26)
				0	0.00
			LESS - CURRENT MONTH VOIDS:		
				51140	(261.07)
					0.00

					221,446.53
					=====

DIRECTOR PAYROLL & REIMBURSEMENTS

MARCH 2012

<u>Check Date</u>	<u>Event Date</u>	<u>Event Description</u>	<u>Pay Description</u>	<u>Amount</u>
<u>COATE, PAUL F</u>				
03/02/2012	02/15/2012	JBWD BOARD MEETING	DIRECTOR'S FEES	173.63
03/16/2012	03/07/2012	JBWD BOARD MEETING	DIRECTOR'S FEES	173.63
03/16/2012	0/00/0000		REIMBURSEMENT	0.00
03/30/2012	03/14/2012	JBWD SPECIAL BD MTG	DIRECTOR'S FEES	173.63
03/30/2012	03/21/2012	JBWD BOARD MEETING	DIRECTOR'S FEES	173.63
Total:				694.52
=====				
<u>LONG, WILLIAM C</u>				
03/02/2012	02/11/2012	MWA BOARD MEETING	UNPAID LEAVE/PREPAID	0.00
03/02/2012	02/09/2012	MILES TO MWA BD MTG	REIMBURSEMENT	77.15
03/02/2012	02/15/2012	JBWD BOARD MEETING	DIRECTOR'S FEES	173.63
03/16/2012	03/07/2012	JBWD BOARD MEETING	DIRECTOR'S FEES	173.63
03/16/2012	0/00/0000	REIMB: MILEAGE	REIMBURSEMENT	0.00
03/30/2012	03/14/2012	JBWD SPECIAL BD MTG	DIRECTOR'S FEES	173.63
03/30/2012	03/21/2012	JBWD BOARD MEETING	DIRECTOR'S FEES	173.63
Total:				771.67
=====				
<u>LUCKMAN, MICKEY C</u>				
03/02/2012	02/15/2012	JBWD BOARD MEETING	DIRECTOR'S FEES	173.63
03/16/2012	03/07/2012	JBWD BOARD MEETING	DIRECTOR'S FEES	173.63
03/16/2012	0/00/0000	REIMB: MILEAGE	REIMBURSEMENT	0.00
03/30/2012	02/23/2012	MILES TO MWA BD MTG	REIMBURSEMENT	74.37
03/30/2012	02/23/2012	MWA BOARD MEETING	UNPAID LEAVE/PREPAID	0.00
03/30/2012	03/14/1921	JBWD SPECIAL BD MTG	DIRECTOR'S FEES	173.63
03/30/2012	03/21/2012	JBWD BOARD MEETING	DIRECTOR'S FEES	173.63
Total:				768.89
=====				
<u>REYNOLDS, MICHAEL P</u>				
03/02/2012	02/15/2012	JBWD BOARD MEETING	DIRECTOR'S FEES	173.63
03/16/2012	06/01/2011	VOID CHECK #1228	DIRECTOR'S FEES	(173.63)
03/16/2012	06/01/2011	REISSUE VOIDED CHECK	DIRECTOR'S FEES	173.63
03/16/2012	03/07/2012	JBWD BOARD MEETING	DIRECTOR'S FEES	173.63
03/16/2012	0/00/0000	REIMB: MILEAGE	REIMBURSEMENT	0.00

<u>Check Date</u>	<u>Event Date</u>	<u>Event Description</u>	<u>Pay Description</u>	<u>Amount</u>
<u>REYNOLDS, MICHAEL P</u>				
03/30/2012	03/14/2012	JBWD SPECIAL BD MTG	DIRECTOR'S FEES	173.63
03/30/2012	03/21/2012	JBWD BOARD MEETING	DIRECTOR'S FEES	173.63
Total:				<u>694.52</u> =====
<u>WILSON, GARY L</u>				
03/02/2012	02/15/2012	JBWD BOARD MEETING	DIRECTOR'S FEES	173.63
03/16/2012	03/07/2012	JBWD BOARD MEETING	DIRECTOR'S FEES	173.63
03/16/2012	0/00/0000	REIMB: MILEAGE	REIMBURSEMENT	0.00
03/30/2012	03/21/2012	JBWD BOARD MEETING	DIRECTOR'S FEES	173.63
Total:				<u>520.89</u> =====

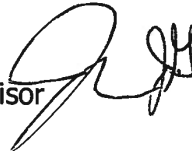
Grand Total: 3,450.49
=====

JOSHUA BASIN WATER DISTRICT
SUPPLEMENTAL DATA SHEET

Regular Meeting of the Board of Directors

April 18, 2012

Report to: President and Members of the Board
From: Jim Corbin, Water Distribution Supervisor



TOPIC: REPLACEMENT OF UTILITY HYDRO-VACUUM

RECOMMENDATION: That the Board authorize the purchase of a Ditch Witch FX25 Vacuum Excavation System at a cost of approximately \$35,609.50 to be funded by the equipment replacement fund.

ANALYSIS: The E.H. Wachs Utility Hydro-Vacuum purchased (used) by the District in 2002 is used frequently and needs to be replaced. We received quotes for the replacement vacuum from E.H. Wachs and Ditch Witch, the top two excavating vacuum companies in the water industry, and recommend the Ditch Witch. The cost for each is:

Ditch Witch FX25	\$35,609.50
E.H. Wachs 77-000-32	\$34,210.62

Although the Ditch Witch is about \$1,400 more than the E.H. Wachs, it provides superior features. The FX25 comes with an 800 Gallon waste tank versus a Wachs 350 gallon tank. The FX25 has a larger suction (vacuum) capacity, larger engine, larger suction hoses and a tandem trailer. Other water agencies including Hi-Desert Water District speak highly of its reliability and use. Both units comply with EPA/CARB regulations and neither unit requires a Commercial Driver's license. Attached you will find a side by side comparison for further details. A Ditch Witch representative will be here at 6:30 on April 18, to demonstrate the vacuum for the Board.

The current vacuum has a variety of uses including cleaning out valve cans, and excavating for buried valves, small mainline leaks, service line leaks and various potholing projects such as the H-zone pipeline replacement and recharge pipeline project. It is used to excavate to verify discrepancies between what is on our maps and what is in the ground (known as "map verification").

Use of the vacuum has dramatically increased in recent years with expanded maintenance programs and various in-house

projects. A recent example is the pipeline recharge potholing on HWY 62. The vacuum allowed us to excavate three separate locations in a four-hour time span with two staff members. This would have taken more than a day to hand dig and would have cost \$3,600.00 for an outside contractor.

The vacuum can be used with little training by all staff members for uses not requiring the backhoe. It is safer for the operator especially when excavating near other gas, electric, and fiber optic utilities, and decreases the potential for damage to those facilities. It is used in very tight spaces where even our smaller backhoe would be nearly impossible to utilize, requiring hand-digging. Reducing hand digging also reduces the potential for back injuries.

The Wachs has required increased maintenance and trips to the shop. We believe the vacuum is close to a major hydraulic failure. The pressure washer system is inoperable requiring an estimated \$1,000.00 for that alone. Although we do use the vacuum extensively we are finding ourselves "working" on it before every use to get it operating and believe its life expectancy is short.

The E.H. Wachs vacuum is very proprietary. For example their filters are custom manufactured and cannot be cross referenced to a Wix or Car Quest filter, costing the District about an extra \$225 to \$450 per year just for filters.

Based on our research, the recommendation by HDWD, Ditch Witch's reputation and the side by side comparisons between the two Excavation vacuums we recommend the purchase of the Ditch Witch FX25 Vacuum Excavation System.

DITCH WITCH
VACUUM SPECIFICATION COMPARISONS

MODEL	Ditch Witch FX25-800	Wachs 77-000-32 Gas	Wachs 77-000-34 Diesel
ENGINE	Vanguard Gasoline	Kohler Gasoline	Briggs & Stratton Diesel
GROSS HP	31 HP	27HP	26.5HP
BLOWER CFM	540	500	500
MAX VACUUM	15"Hg	11"Hg	11"Hg
WATER PUMP PRESSURE	3,500 PSI	3,000 PSI	3,000 PSI
WATER PUMP FLOW	4.2 GPM	2.5 GPM	2.5 GPM
SPOILS TANK SIZE	800 GALLONS	350 GALLONS	350 GALLONS
FRESH WATER TANK SIZE	80 GALLONS	80 GALLONS	80 GALLONS
TOTAL GVWR	9,950 LB	7,000 LB	7,000 LB
Parts & Service Location	Corona, CA	Illinois	Illinois
Operator Training	Yes – Local	Not Available	Not Available
Maintenance Training	Yes – Local	Not Available	Not Available
Safety Training	Yes – Local	Not Available	Not Available

DITCH WITCH OF SAN DIEGO

349 S. MARSHALL AVENUE
EL CAJON, CA 92020-4209
Phone 619-448-0770
Fax 619-448-0776

Joshua Basin Water Dist
Jeremiah
61750 Chollita Rd
Joshua Tree, CA

Quote: 31212nols
Date: 04/09/2012
Salesperson: Nick Olson
Mobile: 951-232-1204
E-Mail: nolson@calditchwitch.com

Price Quote
Quote valid for: 30 days

FX25 VACUUM EXCAVATION SYSTEM

The FX25 Vacuum Excavation System is a low cost, low maintenance vac system that can perform a wide range of cleanup and soft excavation tasks. The basic unit includes the following: Briggs and Stratton Vanguard 31 hp (gross) air-cooled gasoline engine, open power pack design and cylinder assist dumping system

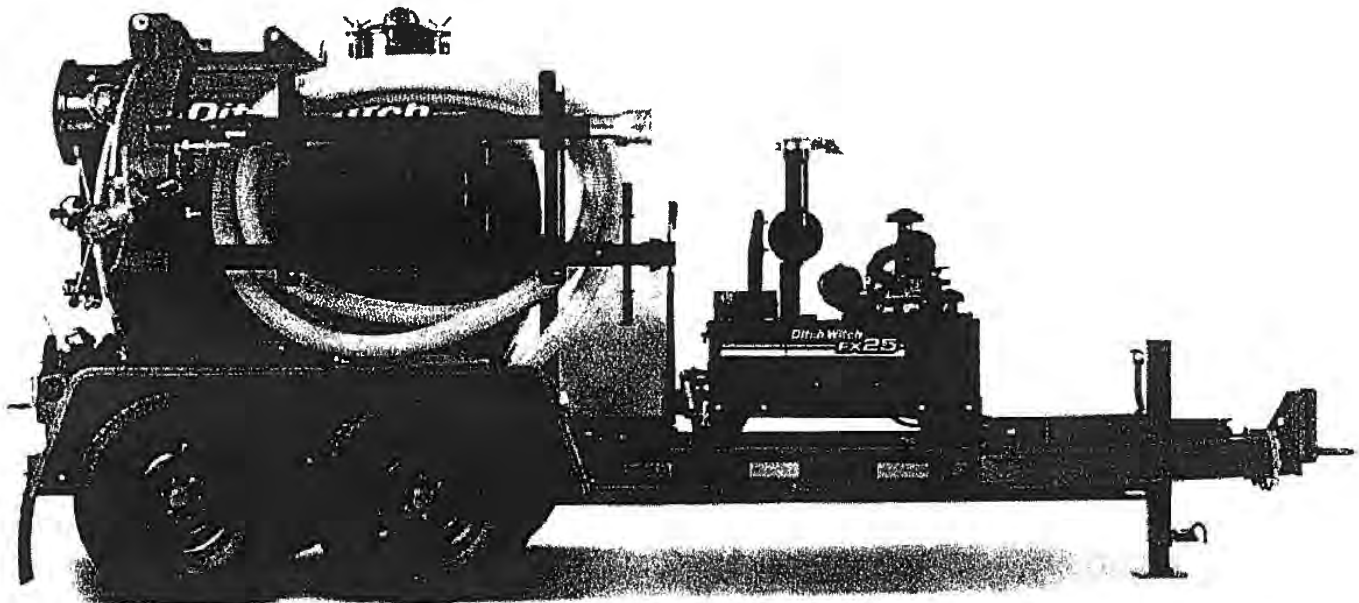
<u>Item</u>	<u>Qty</u>	<u>Part Number</u>	<u>Description</u>
10	1	FX25	FX25 VAC SYSTEM
20	1	FX25-2	BASE UNIT: 800 GAL, WATER & T9S
30	1	315-721	3" SUCTION HOSE-25'-M/F
40	1	401-029	TURBO SPRAY GUN NOZZLE
50	1	T9S	T9S TANDEM AXLE TRAILER
60	1	025-020	T9S VAC TRAILER
70	1	217-718	BRAKE CONTROLLER - ELECTRONIC

SUBTOTAL BEFORE TAX	\$	33,000.00
TAX 7.75%	\$	2,557.50
TIRE TAX	\$	7.00
DMV FEE	\$	45.00
TOTAL	\$	35,609.50
		US Dollars

NOTE: Quoted price is plus all applicable sales, use, excise or tire taxes, and DMV Fees. Registration and fees for any unit subject to California Air Resource Board regulation, is customer responsibility.

 **DITCH WITCH®**

FX25 VACUUM EXCAVATION SYSTEM



KEY FEATURES

- Compact, low-profile system powered by a reliable, 31-hp (23.1 kW) Briggs & Stratton gas engine with high-capacity, remote air filter.
- Designed for multiple cleanup and soft excavation tasks: potholing, valve box and utility vault cleanout, cleaning storm drains, exposing buried utility lines, HDD site cleanup, water leak repair, commercial and residential debris cleanup and landscaping, posthole digging, and more.
- Optional high-pressure water system with 3,000-psi (207 bar) water pump and 80- or 200-gallon (303L/757L) water tank.
- Low-maintenance FX25 features a large-capacity, single-element, 3-micron washable vacuum filter; all functions are run by a single power pack, further reducing maintenance and minimizing fuel costs.
- Sturdy, steel-reinforced FX25 is built to last and maintain its value; compatible trailer features heavy-duty components and mounting structures.
- Full-opening rear door with single-point latch provides easy spoils removal.
- Hydraulically controlled, dual-cylinder tank dumping system provides stability when dumping.
- Easy-access controls, hose, and tooling storage rack are designed to improve convenience and productivity.
- Meets all EPA/CARB regulations.

 **Ditch Witch®**
ditchwitch.com



FX25 VACUUM EXCAVATION SYSTEM

SPECIFICATIONS

	U.S.	METRIC		U.S.	METRIC
DIMENSIONS					
Length	201 in	5.1 m	BATTERY	12V	
Height	91 in	2.3 m	Group	110 min	
Width	97.5 in	2.5 m	SAE reserve capacity rating	800 A	
Deck height	19 in	483 mm	SAE cold crank rating @ 0° F (-18° C)		
TANK					
Capacity	500 gal	1893 L	VACUUM SYSTEM		
Weight, empty			Drive type	Belt	
no water	4805 lb	2179 kg	Displacement	540 cfm	15.3 m ³ /min
80 gal water	4930 lb	2236 kg	Maximum vacuum	15 inHg	380 mmHg
Weight, full tank			Door diameter	52 in	1.3 m
no water	8870 lb	4023 kg	Drain valve size	6 in	152 mm
80 gal water	9765 lb	4429 kg	Inlet valve size	4 in	102 mm
Length	66 in	1.68 m	Primary valve shutoff size	12 in	305 mm
Diameter	50 in	1.3 m	Filter type	Reusable	
POWER					
Engine	Briggs & Stratton Vanguard		Filter area	100 ft ³	9.3 m ²
Fuel	Gasoline		Water trap capacity	8 gal	30.3 L
Cooling medium	Air		WATER PUMP SYSTEM		
Aspiration	Natural		Pressure, max.	3000 psi	207 bar
Number of cylinders	2		Flow	4 gpm	15 L/min
Displacement	54.68 in ³	896 cc	Hose length	50 ft	15.2 m
Bore	3.37 in	86 mm	Clutch type	Electric with auto de-clutch	
Stroke	3.07 in	78 mm	FLUID CAPACITIES		
Manufacturer's gross power rating (SAE J1940)	31 hp	23.1 kW	Engine oil, with filter	79 oz	2.3 L
Estimated net power rating	N/A		Fuel tank	6.9 gal	26.1 L
Rated speed	3600 rpm		Vacuum pump	22.8 oz	674 mL
Emissions compliance	EPA LSI	EU Stage II	Hydraulic reservoir	2.5 gal	9.5 L
HYDRAULIC SYSTEM					
Pressure	2500 psi	172 bar	NOISE LEVEL		
Drive type	12V DC power		Sound power	110 dBA	
Tank lift cylinder size	3 in	76 mm			
Tilt angle, max.	45°				

Specifications are general and subject to change without notice. If exact measurements are required, equipment should be weighed and measured.





Water Utility Products
 455 Comanche Circle | Harvard, Illinois 60033
 T: +1.815.943.4785 | F: +1.815.943.5098
 ehwachs.com

Quotation

TO: Jeremiah Nazario
 Joshua Basin Water District
 Chollita Rd
 Joshua tree, CA 92252

Date: 3/29/2012
 Quotation Number: KR50627
 Payment Terms: Net 30
 Shipping Terms: FOB Destination
 Valid Through: 5/28/2012

E.H. Wachs is pleased to offer the following quotation.

Item Number	Description	Qty	U/M	Unit Price	Line Total
1 77-000-32	Utility Hydro-Vac (Gas) Trailer: A 27 HP Kohler overhead cam, air cooled gasoline engine provides ample power for all contained functions. A positive displacement blower provides 500 CFM-11" Hg vacuum, with spoils contained by a 350 gallon tank utilizing our exclusive hydraulic side and dump system and latching rear door. Also driven from the common power train is a 2.5 gpm @ 3000 psi pressure washer system with 3 gallon anti-freeze tank and 80 gallon vertical water tank. Includes 2-1/2", 1-1/4" & 7/8" suction wands, short & long wash-down guns, 20' suction hose and 50' retractable hose reel. Destination and freight charges included.	1	EA	\$31,750.00	\$31,750.00

Quote Total \$31,750.00

Tax - 7460.62

Thank you for the opportunity to quote your application needs. If you have any questions or if I may be of any further assistance to you please do not hesitate to notify me.

(SALES TAX!!!!) We collect sales tax in all but the following states: AK, DE, MT, OR and NH. If you are tax exempt please supply your identification number and certificate with your order. If your exempt number is not on file, tax will be added to your order.

Ken Redding
 Technical Sales Representative
 815-943-4785 x2773
 kredding@ehwachs.com

Called 4-10-12
 TO INQUIRE ABOUT CARB

EMAIL, DO

DWAISTROM@EHWACHS
 .COM

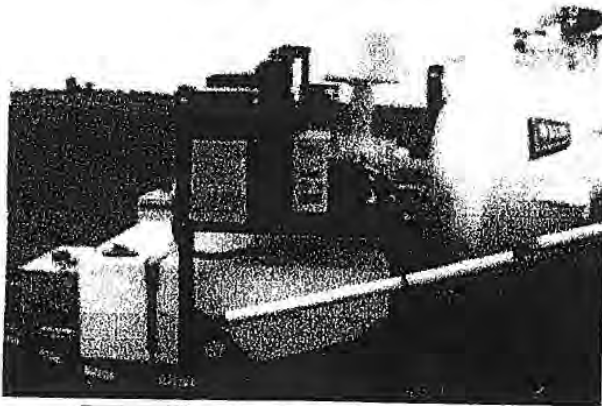
Please refer to our [website](#) for terms and conditions.

Hydro-Vac Trailer

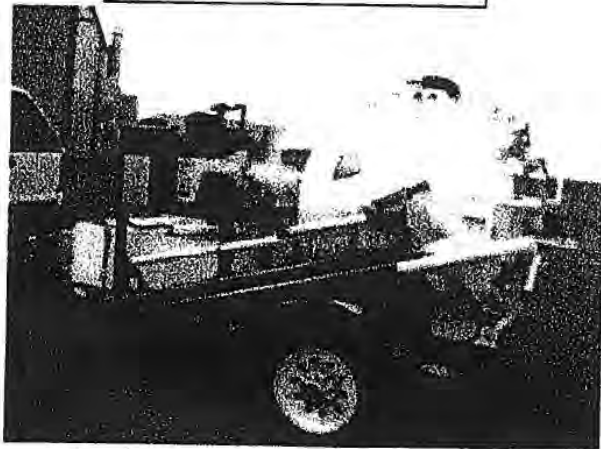
77-000-32 Gas & 77-000-34 Diesel

The Hydro-Vac Trailer combines all the necessary features required for hydro-excavation on a single axle, structural steel framed trailer.

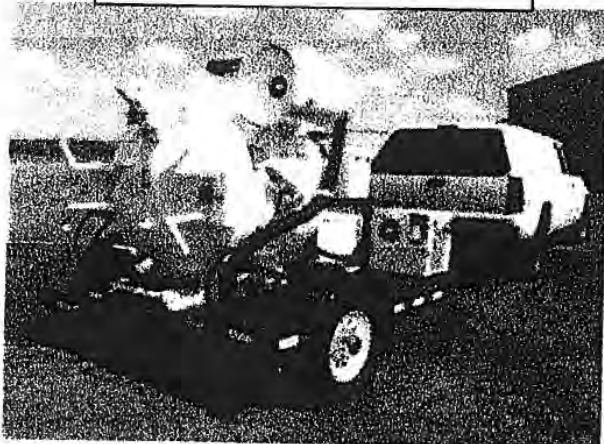
Power Pack (27 HP Gas shown) combines Pressure Washer Pump & Vacuum Pump



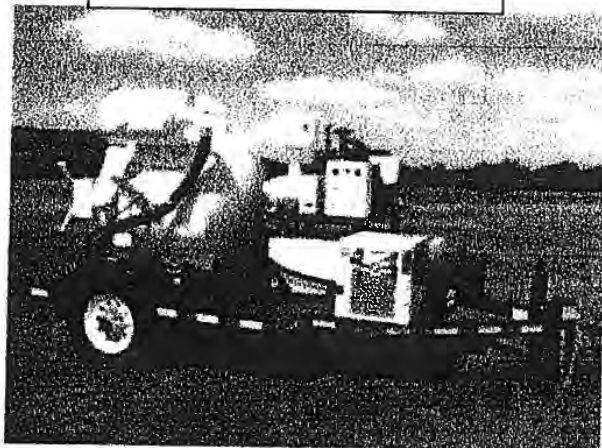
Pressure Washer Hose Reel & Wand/Pressure Washer Gun Storage



350 gallon hydraulic spoils tank and self contained multi-stage filter system



Control box and optional HTMA class II Hydraulic system





E.H. WACHS™

An **ITC** Company

Superior Equipment. Complete Support.

ehwachs.com
WATER UTILITY PRODUCTS
877-441-4421

Hydro-Vac Trailer System

Power Pack		Yes	No	Specify
Engine	Briggs & Stratton 26.5 horsepower, liquid cooled diesel engine, model DM950D (trailer #77-000-34)	X		
	Kohler 27 horsepower gasoline, model CH7405 Command Pro27 (trailer #77-000-32)			
Controls	Digital tachometer, engine hour meter, volt meter, vacuum gauge, spoils dump switch, spoils door switch and water/vacuum selector switch	X		
Vacuum Pump	Clutch operated, dual belt drive, positive displacement rotary lobe (Roots Type) blower. Vacuum performance of 500 CFM @ 11 Hg produces conveying velocity rating of 10,185 FPM through 3" hose	X		
Pressure Washer Pump	Clutch operated, dual belt drive, 2.5 GPM @ 3,000 PSI pump. 3 gallon antifreeze tank with two position selector valve.	X		
Hydraulic System	Direct coupled pump rated at 8 GPM @ 1,800 PSI continuous duty. 10 gallon hydraulic reservoir with thermostatic controlled fan cooled heat exchanger. Instrumentation includes an oil level gauge, temperature gauge, pressure gauge and selector valve switching to a HTMA class II auxiliary hydraulic circuit.			Optional

Spoils - Rear Discharge (pump specifications in the Power Pack section)		Yes	No	Specify
Debris Holding Tank	350 gallon holding capacity. Top hinged full opening dump door with twin hydraulic remote operation door latches, sure seal square gasket, vacuum break valve, 6" mechanical ball shut-off, and 3" dump valve.	X		
Filtration	Staged filtration consisting of a heavy material drop out debris tank and a self-contained multi-stage filter canister with a 10 micron polyester reusable cartridge. All filters washable and reusable.	X		
Dumping	Twin cylinder, electric over hydraulic dump system, powered by Monarch HPU. The slide and tip system moves the tank out before tilting to clear the truck/trailer bed for dumping, then lifts to 55 degrees to drop debris.	X		
Hose and Wands	3" x 20' suction hose with 2-1/2" x 8', 1 1/4" x 8' and 7/8" x 8' Steel suction wands.	X		

Pressure Washer (pump specifications in the Power Pack section)		Yes	No	Specify
Water Holding Tank	90 gallon clean water holding tank with 8" fill neck.	X		
Hose and Wands	50' hose on spring rewind hose reel uses quick disconnects to change between the (2) included wands; one with a zero degree nozzle for digging and 45 degree, fan wash down "Shorty" wand.	X		
Water Heater	Used in conjunction with 2.5 GPM at 3000 PSI pressure washer, diesel fired water heater produces 197,000 BTUs of energy. Adjustable to 210 degrees fahrenheit, the unit has flow and temperature limit switches to maintain safe operation.			Optional



E.H. WACHS*

An **ITW** Company

Superior Equipment. Complete Support.

ehwachs.com
WATER UTILITY PRODUCTS
NO. 951475

Hydro-Vac Trailer System

Trailer		Yes	No	Specify
Frame	7,000 lbs. GVWR trailer with single axle, independent torsion wheel suspension with electric brakes. All structural steel construction (no tubing) with metal deck. Tongue weight is 850 lbs dry.	X		
Lighting	DOT approved LED lighting with Weather Pack environmentally sealed connectors.	X		
Finish	Entire trailer is solvent washed and phosphoric etched. All seams are caulked then a two part urethane paint (color white/black) applied. A durable plastic bed lining product is then applied to trailer deck and fender fronts.	X		
Pintle Hitch	Pintle with Safety Chains	X		

LX Package		Yes	No	Specify
Job Box	Heavy duty, locking, polished diamond plate job box.			Optional
Service Lighting	Programmable arrow board includes eight function control box with eight individual segments and (2) mounted halogen swiveling work lights			Optional

 **Ditch Witch**[®]
GROUNDBREAKING[™]
Vacuum Excavation
Systems



**Vacuum Applications for
Utilities and Water
Departments**

 **Ditch Witch**[®]
GROUNDBREAKING™
Vacuum Excavation
Systems

Thank you, in advance, for taking time to review the attached information regarding our vacuum excavation systems. We have had great success working with contractors and water agencies around the world developing our products and new methods for infrastructure development, maintenance, and rehabilitation. There have been great advancements in technological and safety features of our products that are sure to benefit your agency. We have prepared the contents of this presentation to provide you with a further knowledge of those advancements and the Ditch Witch FX Vacuum Excavation product line.

You might want to know, “**why**” Ditch Witch:

- Compliance:** We are fully dedicated to meeting the standards required by today’s environmental and government agencies. We meet and exceed all EPA, CARB, OSHA, and DOT requirements.
- Hands-on training/support:** Local representatives are available to provide you with the highest level of customer support, insuring proper use, and “best practices” are followed.
- Trusted quality:** Ditch Witch has been one of the most trusted names in the construction equipment for more than 50 years, building all its products in America, with only high quality domestic components.
- Parts availability:** Ditch Witch guarantees that parts for your Ditch Witch equipment will be available for at least 10 years.
- Professional:** Our personnel are here to help you and provide you with an experience that will exceed your every expectation.
- Customized:** We invite the opportunity to provide you with a product that is built to your specific needs.

Once you have had an opportunity to review the attached, please feel free to contact us for more information or to schedule a demonstration.

800-350-2595

www.calditchwitch.com

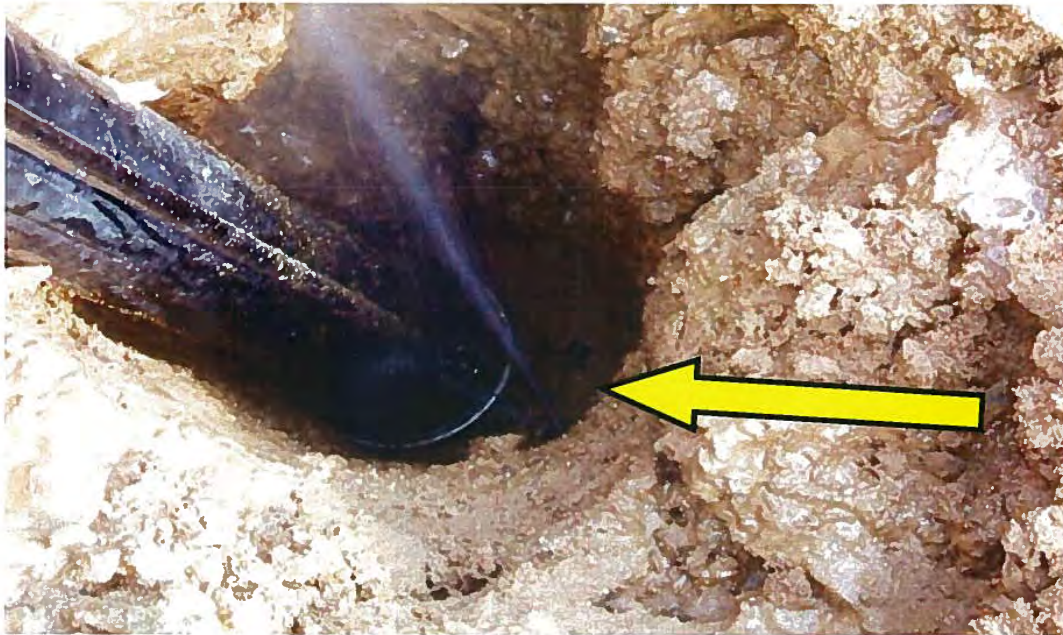
Water Leak Repair:

Water companies/departments can cut time and labor cost by 100%



Typical water leak at main valve. Area is prepped to excavate a work space

The crew uses the 2-in-1 tool to pin point the location of the leak in less than 5 minutes. Notice the high pressure leak.



The suction tool and Turbo Nozzle continue to safely excavate a work space

This Water Department continues to safely remove leak water and soil excavated by the Turbo Nozzle



The water is turned off while the new line is pulled and reattached. Job completed in 2 hrs.

Street-side of residential water meter excavation. It usually takes them an hour to dig this type of pit. It took the FX60 7 min.



Another good example of Safe Excavation is this unmarked fiber optic line that was exposed but unharmed while excavating the pit.

Storm Drain Clean-Out



Removal is usually done with hand shovel and buckets with ropes and takes about 1-2 hours each

Before/After Results



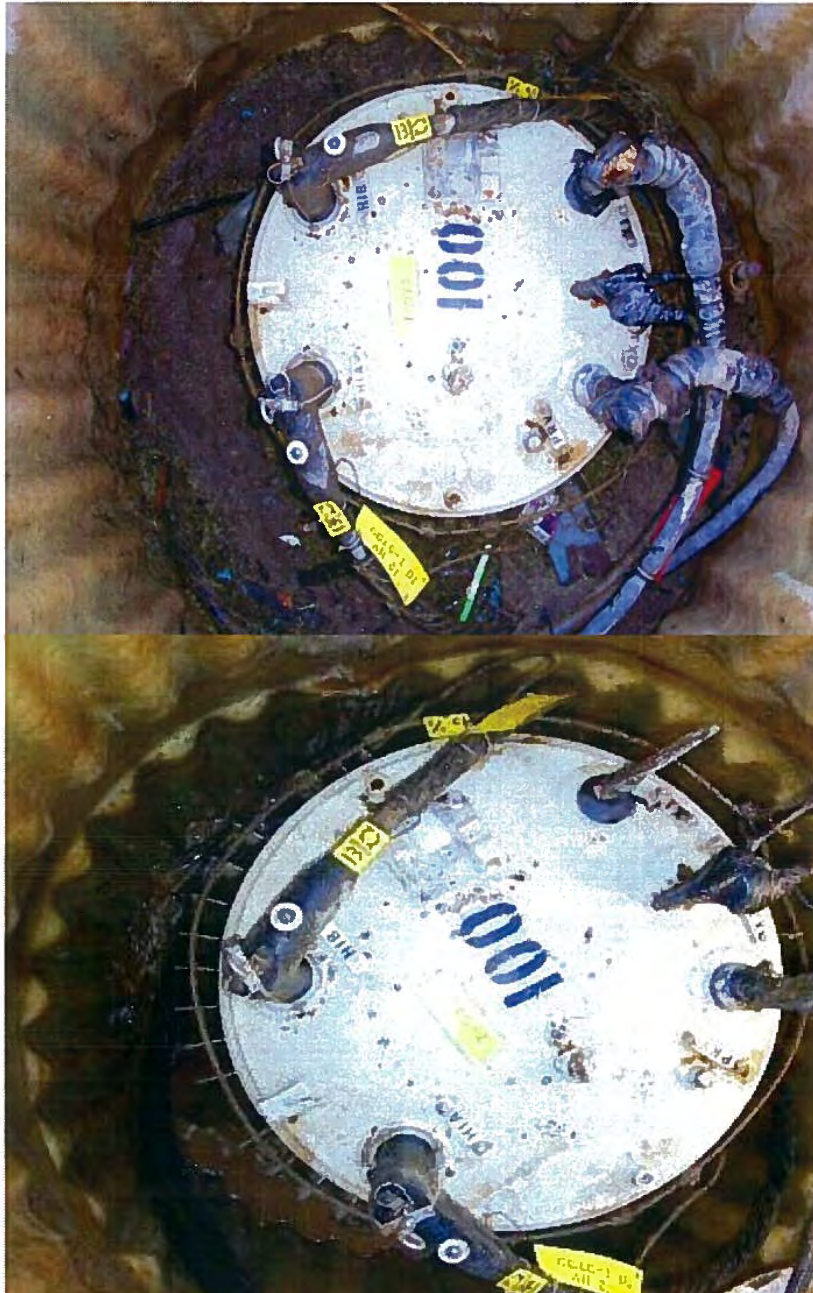
The drain is now spotless & only took 5 minutes to complete.

Underground Utility Vaults



Their normal method of clean-out consist of shovels & buckets which took 3 hrs to clean

Before/After Results



The total clean out time only took 15 minutes. Normally the whole apartment complex would be without power for over 3 hrs.

Power & Gas Company Uses



Power & Gas Company Uses



Monument Cleanup & Install



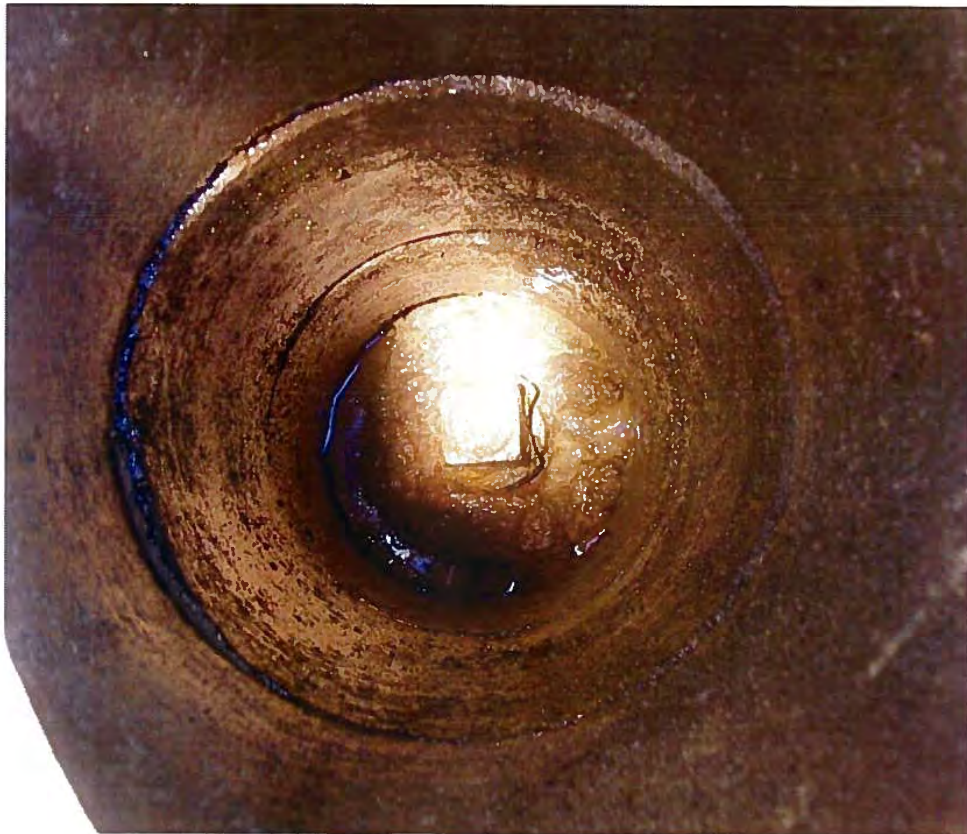
Storm Drain Cleanup



Pothole Utilities



Water Valve Cleanout



Soft/Safe Excavation



Construction Site Storm Water Control



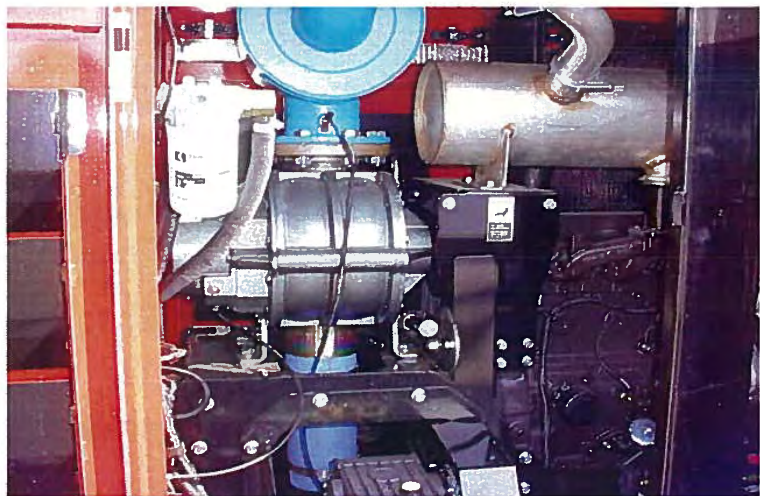
 **Ditch Witch**[®]
GROUNDBREAKING[™]
Vacuum Excavation
Systems



**Features and
Benefits**

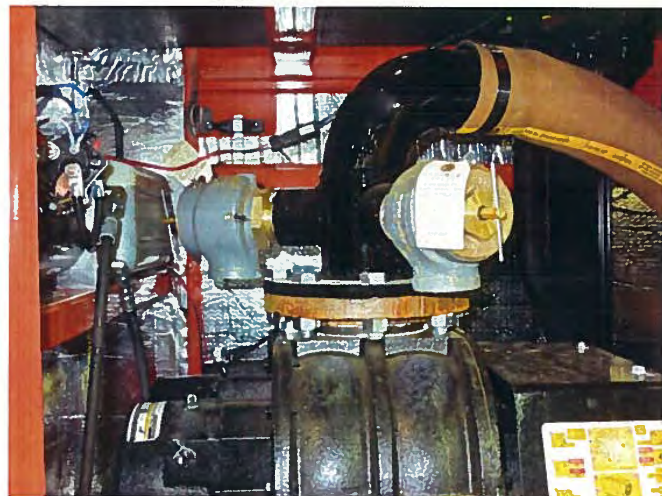
FX30/60 Power Pack Enclosure

- Diesel engine
- Tuthill blower
 - *productive*
- Fully enclosed & insulated
 - *exclusive feature*
 - *quietest system on the market today*
 - *protection from the elements*
 - 73db FX30 & 82db



FX50 Power Pack With Reverse Flow

- 49 HP Diesel engine
- Tuthill blower
 - 1025
productive
- Fully enclosed & insulated
 - *Reverse flow direction for spoils purging*
 - *Simple lever re-directs air*
 - 82db



Curb Side Controls



Auxiliary Hydraulics Supply- FX60



FX30/60 Filtration W/ Cleanout



- Single element filter- 3 or 10 micron option
- 33% more surface area than closest competitor
- 40% better filtration capability

500 Gallon Units Under 10,000 LB GVWR

- No CDL required to tow
- Compact design with big power



Water System



- Water pump has an auto-clutching feature
 - *pump disengages when water not in use allowing full horsepower to drive blower*
 - *reduces wear on water pump*
 - *3000psi (FX30) or 3500psi (FX60)*
 - *Optional Water*

2-in-1 Multi-Nozzle Cutting Tool

- 6-way water jet cutting systems efficiently disturbs soil for productive vacuum excavation



Curbside Tool & Hose Access



Curbside access

- All tooling and hoses are away from traffic side
- Operator can access tooling and

Tanks

Curbside inlet

- Full opening rear door
 - *single mechanism door lock*
 - *rear dump valve*
 - *3 level indicators (low, half, full)*
 - *Hydraulic open optional*



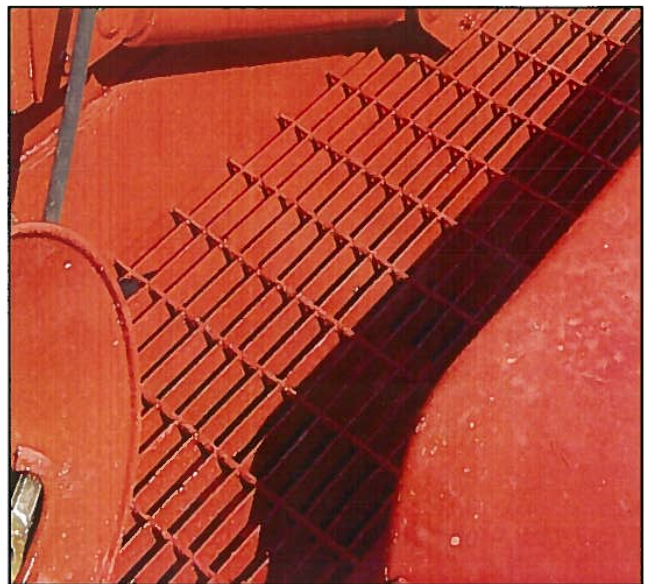
Tank Dump System



- **Hydraulic cylinder tank lift**
 - *stable when lifting on a slope*
 - *able to work on cylinders with tank down*
- **Remote tank lift control**
 - *ease of*

Trailer

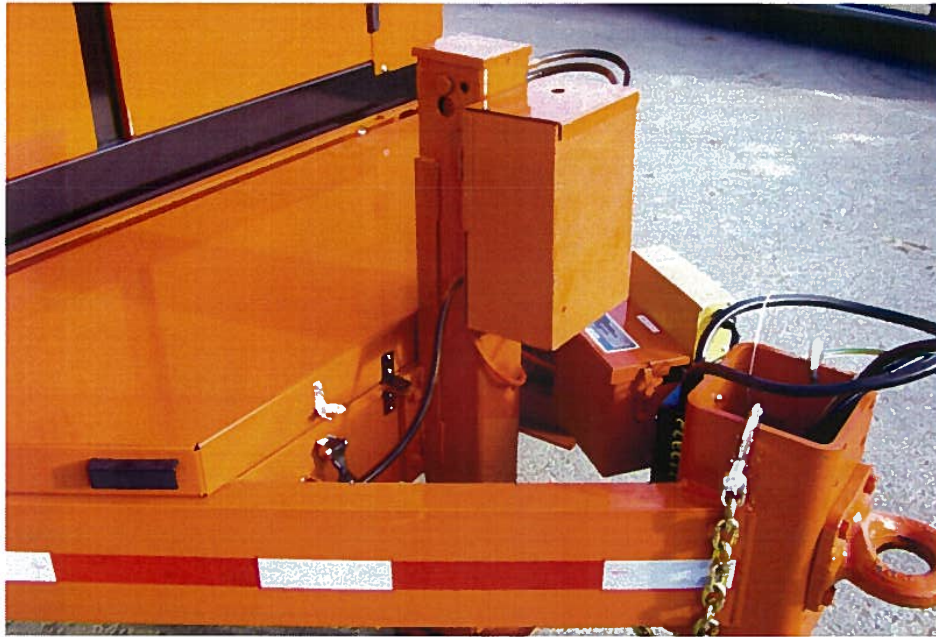
- **Full steel grate decking**
 - *easy to clean*
 - *provides traction*
 - *steps to get on trailer*



Optional Hose Management Systems and Valve Exerciser



Optional Hydraulic Landing Gear / Wireless Remote Boom





Custom Installations & Configurations Available

- FX20, FX30, FX50, FX60 power units
- Trailer, truck, or skid mount any size unit
- Built directly on customer vehicle
- Any size water supply tank
- 150, 300, 500, 800 or 1,200 gallon spoils tank
- Optional air compressor systems available



Truck Mount Option



Skid Mount Option



Custom Vac/Air Truck



 **Ditch Witch**[®]
GROUNDBREAKING™
Vacuum Excavation
Systems

Why Ditch Witch over the competition?

- **Almost 10 db quieter than the closest competition:** Hearing loss is one of the most common injuries in the construction industry and is one of the few that can't be repaired/healed.
- **Fully enclosed engine and working components:** That allows moving parts to be kept away from the elements to insure long life.
- **Ease of Maintenance:** Simplified operator's manuals available in both English and Spanish.
- **Ditch Witch Brand Name:** 50 years in the making, proven quality and reliability.
- **Engineered Product:** The FX is engineered from the ground up as a Vacuum trailer and is not piece milled together, insuring functionality at its finest.
- **True Curbside controls:** Gives the operator the ability to work in a safe "traffic" free environment.
- **Guaranteed Parts:** The Ditch Witch 10 year parts availability guarantee.
- **Warranty:** Standard 1 year and 3 year Available.
- **Reduced safety and injury liability:** The use of the FX may reduce the amount of back injuries that occur as a result of confined space shovel use.



 **Ditch Witch**[®]
GROUNDBREAKING[™]
Vacuum Excavation
Systems



**Vacuum Specifications
and Literature**

Introducing The New 49 HP FX50



DITCH WITCH® FX50 VACUUM EXCAVATOR

Ditch Witch in California is proud to introduce the new Ditch Witch FX50 Vacuum Excavator. This high capacity 800 gallon (1200, 500, and 300 gallon tanks also available) low-profile vacuum was designed from customer input to help contractors be successful in the highly competitive underground construction environment. At 49HP, this powerful unit was designed to be powerful and environmentally friendly. Options include reverse flow, wireless boom controller, hyd/elec landing gear, and much more. Contact your Ditch Witch representative for more details.



KEY FEATURES

The FX50 is built to last and built to be powerful with it's 1025 CFM (loaded rating) blower.

The single arm hydraulic door opens a full 90 degrees allowing users to clean tank without having to crawl inside.

This vacuum can be a skid mount option or trailer mount option (T18 or T9 series).

New options like reverse flow and cyclone filtration system.

DETAILS

48.9 HP Duetz diesel Tier 4i engine

Spoils tank options from 1200, 800, 500, and 300

Highly productive 1025 CFM blower

Single arm all hydraulic door, fully opening to 90 degrees

Integral reverse flow, set at 5 psi

Non-contact water shutoff feature with 3000 PSI pump & 80 gal tank

OPTIONS: Hose boom, valve exerciser, tank wash, many more...

 **Ditch Witch**®
GROUNDBREAKING



DITCH WITCH FX60, FX30

VACUUM EXCAVATORS



FX60 KEY FEATURES

Quietest in its class at 82 dBA
Auxiliary hydraulic power source.
60-hp Cummins diesel engine.

FX30 KEY FEATURES

Quietest on the market at 73 dBA 26-hp.
Kubota diesel engine.
Direct-driven blower.

DETAILS

Compact footprint capable of large-volume production with choice of 300- to 1200-gallon-capacity tanks built in an overall, highly efficient package.

Full opening rear door with single-point latch for easy spoils removal.

Water pressure can be adjusted from a curbside operator's station that allows one-person control of all unit functions.

Reusable, single-element vacuum filter and a blower relief valve air filter provide the industry's best filtration.

Autoclutching feature disengages the water pump when water is not in use, allowing full system power to the blower.

The 1200-gallon's saddle-style freshwater tanks enhance trailer balance with a lower center of gravity while a convenient hose reel saves time.

Fully enclosed, insulated and lockable power pack protects major components from weather and vandalism while leading the industry in noise reduction.



SPECIFICATIONS

FX60

FX30

DIMENSION

LENGTH

FX60 300 GAL (1136 L)/FX30 500 GAL (1893L)
800 GAL (3028 L)
1200 GAL (4542 L)

HEIGHT

FX60 300 GAL/FX30 500 GAL
800 GAL
1200 GAL

WIDTH

FX60 300 GAL/FX30 500 GAL
800 GAL
1200 GAL

DECK HEIGHT

FX60 300 GAL/FX30 500 GAL
800 GAL
1200 GAL

DRY WEIGHT

FX60 300 GAL/FX30 500 GAL
800 GAL
1200 GAL

WEIGHT, WITH FULL TANKS (WATER)

FX60 300 GAL/FX30 500 GAL
800 GAL
1200 GAL

U.S.

201 IN
263 IN
245 IN

METRIC

5.1 M
6.9 M
6.2 M

91 IN
92 IN
99 IN

2.3 M
2.3 M
2.5 M

97.5 IN
100.5 IN
100.5 IN

2.5 M
2.6 M
2.6 M

19 IN
23 IN
N/A

483 MM
584 MM
N/A

7150 LB
8510 LB
11,230 LB

3243 KG
3860 KG
5094 KG

10,350 LB
16,850 LB
24,880 LB

4695 KG
7643 KG
11,285 KG

U.S.

201 IN
263 IN
245 IN

METRIC

5.1 M
6.9 M
6.2 M

91 IN
92 IN
99 IN

2.3 M
2.3 M
2.5 M

97.5 IN
100.5 IN
100.5 IN

2.5 M
2.6 M
2.6 M

19 IN
23 IN
N/A

483 MM
584 MM
N/A

5260 LB
8190 LB
9440 LB

2390 KG
3715 KG
4282 KG

9950 LB
18,000 LB
22,400 LB

4523 KG
8172 KG
10,179 KG

TANK

LENGTH

FX60 300 GAL/FX30 500 GAL
800 GAL
1200 GAL

DIAMETER

FX60 300/800 GAL/FX30 500/800 GAL
1200 GAL

DRAIN VALVE SIZE

INLET VALVE SIZE

66 IN
98 IN
106 IN

1.7 M
2.5 M
2.7 M

50 IN
60 IN
6 IN
4 IN

1.3 M
1.5 M
152 MM
102 MM

66 IN
98 IN
106 IN

1.68 M
2.5 M
2.7 M

50 IN
60 IN
6 IN
4 IN

1.3 M
1.5 M
152 MM
102 MM

POWER

ENGINE

FUEL

COOLING MEDIUM

INJECTION

ASPIRATION

CYLINDERS

DISPLACEMENT

BORE

STROKE

MANUFACTURER'S GROSS POWER RATING (SAE J1995)

ESTIMATED NET POWER RATING (SAE J1349)

RATED SPEED

CUMMINS B3.3

DIESEL

LIQUID

DIRECT

NATURAL

4

199 IN³

3.3 L

3.74 IN

95 MM

4.53 IN

115 MM

60 HP

45 KW

56 HP

42 KW

2200 RPM

2200 RPM

KUBOTA D1105-ES

DIESEL

LIQUID

INDIRECT

NATURAL

3

68.6 IN³

1.12 L

3.07 IN

78 MM

3.09 IN

78.5 MM

26 HP

19.4 KW

24.5 HP

18.3 KW

3000 RPM

3000 RPM

HYDRAULIC SYSTEM

PRESSURE

AUXILIARY FLOW

DRIVE TYPE

TANK LIFT CYLINDER SIZE (1)

FX60 300/800 GAL/FX30 500/800 GAL
1200 GAL

MAXIMUM TILT ANGLE

FX60 300/800 GAL/FX30 500/800 GAL
1200 GAL

TIME TO TILT FULLY UP (EMPTY)

FX60 300/800 GAL/FX30 500/800 GAL
1200 GAL

TIME TO TILT FULLY DOWN (EMPTY)

FX60 300/800 GAL/FX30 500/800 GAL
1200 GAL

2500 PSI

172 BAR

7.5 GPM

28 L/MIN

GEAR

3 IN

76 MM

4 IN

102 MM

45°

45°

50°

50°

10 SEC

23 SEC

16 SEC

28 SEC

12 SEC

19 SEC

16 SEC

23 SEC

BATTERY

GROUP

SAE RESERVE CAPACITY RATING

SAE COLD CRANK RATING @ 0° F (-18° C)

78U, 12 VOLT
110 MINUTES
800 AMPS

78U, 12 VOLT
110 MINUTES
800 AMPS

SPECIFICATIONS

FX60

FX30

VACUUM SYSTEM
DRIVE TYPE
DISPLACEMENT
MAXIMUM VACUUM
VACUUM TANK DOOR DIAMETER
 FX60 300/800 GAL/FX30 500/800 GAL
 1200 GAL
DRAIN VALVE SIZE
INLET VALVE SIZE
PRIMARY SHUTOFF VALVE SIZE
FILTER TYPE
FILTER AREA
 FX60 300 GAL/FX30 500 GAL
 800/1200 GAL
WATER TRAP CAPACITY
 FX60 300 GAL/FX30 500 GAL
 800/1200 GAL
SUCTION HOSE SIZE
SUCTION HOSE LENGTH
 FX60 300 GAL/FX30 500 GAL
 800 GAL
HOSE REEL CAPACITY, W/3-IN (76 MM)
HOSE (1200 GAL ONLY)
HOSE REEL CAPACITY, W/4-IN (102 MM)
HOSE (1200 GAL ONLY)

U.S.	METRIC
BELT	
900 CFM	25.5 M ³ /MIN
16 IN HG	405 MM HG
52 IN	1.3 M
60 IN	1.5 M
6 IN	152 MM
4 IN	102 MM
12 IN	305 MM
REUSABLE	
130 FT ²	12 M ²
130 FT ²	12 M ²
10 GAL	38 L
10 GAL	38 L
3-4 IN	76-102 MM
25 FT	7.6 M
30 FT (2 HOSES)	9.1 M
150 FT	46 M
100 FT	30.5 M

U.S.	METRIC
DIRECT	
500 CFM	14.1 M ³ /MIN
15 IN HG	380 MM HG
52 IN	1.3 M
60 IN	1.5 M
6 IN	152 MM
4 IN	102 MM
12 IN	305 MM
REUSABLE	
100 FT ²	9.3 M ²
130 FT ²	12 M ²
8 GAL	30.3 L
10 GAL	38 L
3 IN	76 MM
50 FT	15.2 M
30 FT (2 HOSES)	9.1 M
150 FT	46 M
100 FT	30.5 M

WATER PUMP SYSTEM
MAXIMUM PRESSURE
FLOW
HOSE REEL CAPACITY, W/WATER LANCE
ANTIFREEZE
CLUTCH TYPE

U.S.	METRIC
3500 PSI	241 BAR
5.2 GPM	20 L/MIN
50 FT	15.2 M
50/50 WATER/ANTIFREEZE MIX	
ELECTRIC WITH AUTO DE-CLUTCH	

U.S.	METRIC
3000 PSI	207 BAR
4.2 GPM	16 L/MIN
50 FT	15.2 M
50/50 ANTIFREEZE/FRESH WATER	
ELECTRIC WITH AUTO DE-CLUTCH	

FLUID CAPACITIES
ENGINE OIL, WITH FILTER
FUEL TANK
VACUUM PUMP
HYDRAULIC RESERVOIR
WATER TANKS
 FX60 300 GAL/FX30 500 GAL
 800 GAL
 1200 GAL (2)

U.S.	METRIC
9 QT	8.5 L
19 GAL	72 L
1.5 QT	1.4 L
15 GAL	57 L
80 GAL	303 L
200 GAL	757 L
500 GAL	1893 L

U.S.	METRIC
4.2 QT	4 L
15 GAL	57 L
22.8 OZ	674 ML
2.5 GAL	9.5 L
80 GAL	308 L
200 GAL	757 L
500 GAL	1893 L

GENERAL
NUMBER OF AXLES
TYPE OF BRAKES
 FX60 300 GAL/FX30 500 GAL
 800/1200 GAL
ELECTRICAL SYSTEM

2
 ELECTRIC OR HYDRAULIC
 ELECTRIC
 12 VOLT DC

2
 ELECTRIC OR HYDRAULIC
 ELECTRIC
 12 VOLT DC

TIRE/PRESSURE
 LT 215/85R16 E (300 GAL)
 215/75R17.5 H (800 GAL)
 LT 235/85R16 G (1200 GAL)

U.S.	METRIC
80 PSI	552 KPA
125 PSI	862 KPA
110 PSI	758 KPA

U.S.	METRIC
80 PSI	552 KPA
125 PSI	862 KPA
110 PSI	758 KPA

LOAD RATING*
TONGUE WEIGHT (EMPTY)
 FX60 300 GAL/FX30 500 GAL
 800 GAL
 1200 GAL
TONGUE WEIGHT (FULL WATER)
 FX60 300 GAL/FX30 500 GAL
 800 GAL
 1200 GAL
TONGUE LOAD, MAX.
 FX60 300 GAL/FX30 500 GAL
 800 GAL
 1200 GAL
GVWR (GROSS VEHICLE WEIGHT RATING)
 FX60 300 GAL/FX30 500 GAL
 800 GAL
 1200 GAL
GAWR (GROSS AXLE WEIGHT RATING)
 FX60 300 GAL/FX30 500 GAL
 800 GAL
 1200 GAL

U.S.	METRIC
1200 LB	545 KG
2240 LB	1016 KG
2450 LB	1111 KG
1125 LB	510 KG
2280 LB	1034 KG
3100 LB	1406 KG
1500 LB	680 KG
2700 LB	1225 KG
3500 LB	1588 KG
9950 LB	4513 KG
18,000 LB	8165 KG
26,000 LB	11,793 KG
9000 LB	4082 KG
16,000 LB	7257 KG
23,400 LB	10,614 KG

U.S.	METRIC
1200 LB	545 KG
1930 LB	875 KG
1600 LB	726 KG
1250 LB	568 KG
1440 LB	654 KG
2160 LB	980 KG
1500 LB	682 KG
2700 LB	1225 KG
3500 LB	1588 KG
9950 LB	4513 KG
18,000 LB	8165 KG
26,000 LB	11,793 KG
9000 LB	4082 KG
16,000 LB	7257 KG
23,400 LB	10,614 KG

SPECIFICATIONS ARE GENERAL AND SUBJECT TO CHANGE WITHOUT NOTICE. IF EXACT MEASUREMENTS ARE REQUIRED, EQUIPMENT SHOULD BE WEIGHED AND MEASURED. DUE TO SELECTED OPTIONS, DELIVERED EQUIPMENT MAY NOT NECESSARILY MATCH THAT SHOWN. PATENTS PENDING. *FOR SPEEDS UP TO 65 MPH (104 KM/H)

DITCH WITCH® FX25 VACUUM EXCAVATOR

Ditch Witch in California is proud to introduce the new Ditch Witch FX25 Vacuum Excavator. This high capacity 800 gallon (500, 300, 200, 150 gallon tanks also available) low-profile vacuum was designed from customer input to help contractors be successful in the highly competitive underground construction environment. This well-balanced unit is both quiet and powerful in relation to its size. This unit may be configured with many different options and combinations. Contact your nearest Ditch Witch sales representative for more details.



KEY FEATURES

The FX25 is built to last due to the utilization of years of research and using components of large vacuums.

Belt driven blower is reliable and easy to maintain.

This vacuum is mounted on top of a rugged Ditch Witch T9 series trailer which means no CDL required to haul.

New integrated water system for potholing, cleaning, and excavation needs.

DETAILS

Powerful 31 hp Vanguard gasoline engine

Standard 800 gal spoils tank (500, 300, 200, & 150 gal tanks avail)

Highly productive 540 CFM blower

Curbside controls and easy access hose & tooling storage

Full opening spoils tank door with hydraulic tank dumping system

Non-contact water shutoff feature with 3000 PSI pump & 80 gal tank

OPTIONS: Hose boom, valve exerciser, tank wash, many more...

 **Ditch Witch**
GROUNDBREAKING™

DITCH WITCH® FX20 VACUUM EXCAVATOR

Take it downtown. Take it into residential areas, alleyways, or any other tight space. Because even if your space is limited, with the Ditch Witch FX20 vacuum excavation system, your options aren't. It's designed for a variety of small excavation and vacuum applications in areas where bigger vacs just can't go. No other compact vacuum excavation system on the market is more capable, more versatile, more portable, or more affordable.



KEY FEATURES

Triple filtration system with cyclone separator provides excellent filtration.

Skid-mounted design allows it to be transported in the back of a pickup, on a flat bed, or on a custom S4S trailer—with no CDL required.

The FX20 is built to last, utilizing many components of much larger vacs.

Belt-driven blower is reliable and easy to maintain.

FX20 0408-1

DETAILS

Exclusive non-contact water shutoff feature protects the water pump and increases reliability.

Pre-positioned spoils tank makes the dumping cycle quick and easy.

Curbside operator's console is standard; console can also be positioned on the left side of the unit for custom applications.

Powered by a 27-hp (20.1 kW) Kohler gasoline engine that's reliable and easy to maintain.

The Ditch Witch organization supports all of its products with superior-quality parts, service, and training, all available from a worldwide network of Ditch Witch dealers.

 **Ditch Witch**
GROUNDBREAKING™

SPECIFICATIONS	FX20	FX25																																										
<p>DIMENSIONS, SKID PACKAGE LENGTH WIDTH HEIGHT: TOP OF PRIMARY SHUTOFF WEIGHT DRY SPOILS TANK FULL, WATER TANK EMPTY SPOILS TANK EMPTY, WATER TANK FULL SPOILS TANK FULL, WATER TANK FULL</p> <p>DIMENSIONS, S4S TRAILER PACKAGE LENGTH WIDTH HEIGHT: TOP OF PRIMARY SHUTOFF WEIGHT DRY SPOILS TANK FULL, WATER TANK EMPTY SPOILS TANK EMPTY, WATER TANK FULL SPOILS TANK FULL, WATER TANK FULL TRAILER GVWR TONGUE WEIGHT DRY SPOILS TANK FULL, WATER TANK EMPTY SPOILS TANK EMPTY, WATER TANK FULL SPOILS TANK FULL, WATER TANK FULL AXLE RATING (EACH)</p>	<table border="0"> <tr> <td>U.S.</td> <td>METRIC</td> </tr> <tr> <td>109 IN</td> <td>2.77 M</td> </tr> <tr> <td>63 IN</td> <td>1.60 M</td> </tr> <tr> <td>74 IN</td> <td>1.88 M</td> </tr> <tr> <td>1594 LB</td> <td>723 KG</td> </tr> <tr> <td>2724 LB</td> <td>1236 KG</td> </tr> <tr> <td>2244 LB</td> <td>1018 KG</td> </tr> <tr> <td>3374 LB</td> <td>1530 KG</td> </tr> <tr> <td>174 IN</td> <td>4.42 M</td> </tr> <tr> <td>86 IN</td> <td>2.18 M</td> </tr> <tr> <td>93 IN</td> <td>2.36 M</td> </tr> <tr> <td>2576 LB</td> <td>1168 KG</td> </tr> <tr> <td>3583 LB</td> <td>1625 KG</td> </tr> <tr> <td>3160 LB</td> <td>1433 KG</td> </tr> <tr> <td>4233 LB</td> <td>1920 KG</td> </tr> <tr> <td>4500 LB</td> <td>2041 KG</td> </tr> <tr> <td>406 LB</td> <td>184 KG</td> </tr> <tr> <td>303 LB</td> <td>137 KG</td> </tr> <tr> <td>660 LB</td> <td>299 KG</td> </tr> <tr> <td>563 LB</td> <td>255 KG</td> </tr> <tr> <td>4500 LB</td> <td>2041 KG</td> </tr> </table>	U.S.	METRIC	109 IN	2.77 M	63 IN	1.60 M	74 IN	1.88 M	1594 LB	723 KG	2724 LB	1236 KG	2244 LB	1018 KG	3374 LB	1530 KG	174 IN	4.42 M	86 IN	2.18 M	93 IN	2.36 M	2576 LB	1168 KG	3583 LB	1625 KG	3160 LB	1433 KG	4233 LB	1920 KG	4500 LB	2041 KG	406 LB	184 KG	303 LB	137 KG	660 LB	299 KG	563 LB	255 KG	4500 LB	2041 KG	<p>U.S.</p> <p>DIMENSIONS, T9 SERIES TRAILER PKG 201 IN 97.5 IN 91 IN</p> <p>4860 LB 9960 LB 6260 LB 9960 LB 9960 LB</p> <p>1200 LB 1260 LB 1200 LB 1380 LB 6000 LB</p>
U.S.	METRIC																																											
109 IN	2.77 M																																											
63 IN	1.60 M																																											
74 IN	1.88 M																																											
1594 LB	723 KG																																											
2724 LB	1236 KG																																											
2244 LB	1018 KG																																											
3374 LB	1530 KG																																											
174 IN	4.42 M																																											
86 IN	2.18 M																																											
93 IN	2.36 M																																											
2576 LB	1168 KG																																											
3583 LB	1625 KG																																											
3160 LB	1433 KG																																											
4233 LB	1920 KG																																											
4500 LB	2041 KG																																											
406 LB	184 KG																																											
303 LB	137 KG																																											
660 LB	299 KG																																											
563 LB	255 KG																																											
4500 LB	2041 KG																																											
<p>POWER ENGINE FUEL COOLING MEDIUM ASPIRATION NUMBER OF CYLINDERS DISPLACEMENT BORE STROKE MANUFACTURER'S GROSS POWER RATING* RATED SPEED FUEL TANK CAPACITY</p>	<p>KOHLER CH740S UNLEADED GASOLINE AIR NATURAL 2 44 CU IN 725 CC 3.27 IN 83 MM 2.64 IN 67 MM 27 HP 20.1 KW 3600 RPM 3600 RPM 10 GAL 38 L</p>	<p>VANGUARD 31HP UNLEADED GASOLINE AIR NATURAL 2 64.68 CU IN 3.37 IN 3.07 IN 31 HP 3200 RPM 10 GAL</p>																																										
<p>VACUUM SYSTEM TWO-LOBE BLOWER (CALCULATED) DRIVE TYPE MAXIMUM VACUUM HOSE SIZE (STANDARD) VACUUM TANK CAPACITY FULL OPENING REAR DOOR DIAMETER OUTLET VALVE SIZE TANK INLET VALVE SIZE TANK DUMP ANGLE (FIXED) PRIMARY SHUTOFF (BALL TYPE) CYCLONIC FILTER TRAP CAPACITY FILTER TYPE FILTER AREA SUCTION HOSE 3"</p>	<table border="0"> <tr> <td>540 CFM</td> <td>15.3 M³/MIN</td> </tr> <tr> <td>BELT</td> <td></td> </tr> <tr> <td>15 IN HG</td> <td>381 MM HG</td> </tr> <tr> <td>3 IN</td> <td>76 MM</td> </tr> <tr> <td>150 GAL</td> <td>568 L</td> </tr> <tr> <td>32 IN</td> <td>813 MM</td> </tr> <tr> <td>4 IN</td> <td>102 MM</td> </tr> <tr> <td>4 IN</td> <td>102 MM</td> </tr> <tr> <td>45°</td> <td>45°</td> </tr> <tr> <td>4 IN</td> <td>102 MM</td> </tr> <tr> <td>4.5 GAL</td> <td>17 L</td> </tr> <tr> <td>WASHABLE POLYESTER</td> <td></td> </tr> <tr> <td>74 SQ FT</td> <td>6.9 M²</td> </tr> <tr> <td>25 FT</td> <td>7.6 M</td> </tr> </table>	540 CFM	15.3 M ³ /MIN	BELT		15 IN HG	381 MM HG	3 IN	76 MM	150 GAL	568 L	32 IN	813 MM	4 IN	102 MM	4 IN	102 MM	45°	45°	4 IN	102 MM	4.5 GAL	17 L	WASHABLE POLYESTER		74 SQ FT	6.9 M ²	25 FT	7.6 M	<p>540 CFM BELT 16 IN HG 3 IN 800 GAL (600, 300, 200, 150 GAL OPTIONAL) 62 IN 6 IN 4 IN 45 DEGREE 12 IN 10 GAL WASHABLE POLYESTER 100 SQ FT 60 FT</p>														
540 CFM	15.3 M ³ /MIN																																											
BELT																																												
15 IN HG	381 MM HG																																											
3 IN	76 MM																																											
150 GAL	568 L																																											
32 IN	813 MM																																											
4 IN	102 MM																																											
4 IN	102 MM																																											
45°	45°																																											
4 IN	102 MM																																											
4.5 GAL	17 L																																											
WASHABLE POLYESTER																																												
74 SQ FT	6.9 M ²																																											
25 FT	7.6 M																																											
<p>WATER SYSTEM WATER TANK CAPACITY WATER PUMP FLOW WATER PUMP PRESSURE (MAX) PUMP CLUTCH</p> <p>ANTIFREEZE SYSTEM HOSE LENGTH</p>	<table border="0"> <tr> <td>80 GAL</td> <td>303 L</td> </tr> <tr> <td>2.6 GPM</td> <td>9.8 L/MIN</td> </tr> <tr> <td>3000 PSI</td> <td>207 BAR</td> </tr> <tr> <td colspan="2">ELECTRIC WITH AUTO DECLUTCH AND LOW WATER SHUTDOWN FEATURE</td> </tr> <tr> <td>50 FT</td> <td>15.3 M</td> </tr> </table>	80 GAL	303 L	2.6 GPM	9.8 L/MIN	3000 PSI	207 BAR	ELECTRIC WITH AUTO DECLUTCH AND LOW WATER SHUTDOWN FEATURE		50 FT	15.3 M	<p>80 GAL (160 & 200 GAL OPTIONAL) 4.2 GPM 3600 PSI ELECTRIC WITH AUTO DECLUTCH AND LOW WATER SHUTDOWN FEATURE</p> <p>60 FT</p>																																
80 GAL	303 L																																											
2.6 GPM	9.8 L/MIN																																											
3000 PSI	207 BAR																																											
ELECTRIC WITH AUTO DECLUTCH AND LOW WATER SHUTDOWN FEATURE																																												
50 FT	15.3 M																																											
<p>BATTERY GROUP SAE RESERVE CAPACITY RATING SAE COLD CRANK RATING @ 0°F (-18°C)</p>	<table border="0"> <tr> <td>12 V</td> <td>12 V</td> </tr> <tr> <td>41 MIN</td> <td>41 MIN</td> </tr> <tr> <td>340 AMPS</td> <td>340 AMPS</td> </tr> </table>	12 V	12 V	41 MIN	41 MIN	340 AMPS	340 AMPS	<table border="0"> <tr> <td>12 V</td> </tr> <tr> <td>41 MIN</td> </tr> <tr> <td>340 AMPS</td> </tr> </table>	12 V	41 MIN	340 AMPS																																	
12 V	12 V																																											
41 MIN	41 MIN																																											
340 AMPS	340 AMPS																																											
12 V																																												
41 MIN																																												
340 AMPS																																												
<p>*PER SAE J1940. SPECIFICATIONS ARE GENERAL AND SUBJECT TO CHANGE WITHOUT NOTICE. IF EXACT MEASUREMENTS ARE REQUIRED, EQUIPMENT SHOULD BE WEIGHED AND MEASURED.</p>																																												



SPECIALTY PRODUCTS



**Electronic Locators &
Piercing Tools**

 DITCH WITCH

LOCATORS

DITCH WITCH 950R/T and 970T Pipe and Cable Locator System

Like real estate, underground construction is all about location, location, location. The three modes and 20+ frequencies of the 950R help you quickly locate buried telephone, CATV, power, gas and water lines. In active mode, the 950T and 970T transmit via direct line connection, induction clamp or induced broadcast signals. In passive mode, the 950R detects signals generated by 31 kHz (CATV) and 50/60 Hz power, as well as re-radiated radio frequencies. And in beacon mode, the 950R detects signals from optional beacons to locate non-metallic service lines; with the 512 Beacon, the 950R locates cast-iron pipe.



DITCH WITCH Electronic Marker Locator (EML)

Say goodbye to your identity problem. The Ditch Witch EML accessory virtually eliminates the search for buried facilities when properly marked with 3M ScotchMark™ Electronic Markers. When buried with the facility, these markers serve as signaling devices. Each marker is color-coded to APWA standards and produces an industry-specific frequency that is pinpointed by the Ditch Witch 910R or 950R locator and EML.



DITCH WITCH 2150GR Ground Penetrating Radar

For municipalities, contractors, utility installers or safety engineers, and other companies with significant infrastructure and outdated utility maps, the Ditch Witch 2150GR helps put everything in proper perspective. It can detect both metallic and non-metallic pipes and cables to depths of up to 10 feet (3 m), depending on soil conditions and antenna selection. And with 5.6 mph (9 km/h) survey speed—four times faster than that of competitive models—and digitally controlled radar, the 2150GR provides faster, clearer scans.



KEY FEATURES

2150GR provides an accurate survey whether the operator is pushing or pulling it across any surface.

User-friendly interface enables the operator to manually input landmarks such as water hydrants and sewer drains, for more accurate survey maps.



DETAILS

Self-engaged antenna provides better contact on uneven terrain and reduces signal loss.

On-to recording and storage capabilities provide on-site data review, post-collection analysis, and proof of work when jobs require it.

Multiple frequencies allow the operator to customize the unit for the job conditions.

Auto-calibrating gain and filter take the guesswork out of setup.

Folds for easy transport in a standard car trunk.



HAMMERHEAD

PNEUMATIC PIERCING TOOLS



- ▶ TOUGH, RELIABLE & PRODUCTIVE
- ▶ HIGH QUALITY ALLOY STEEL
- ▶ EXCLUSIVE CLAMPED REAR ANVIL
- ▶ LOW COST, IN THE FIELD MAINTENANCE



Check out the revolutionary **CATAMOUNT** piercing tool. Smooth starting and unmatched production with the quality you expect from HammerHead.



HAMMERHEAD
TRENCHLESS EQUIPMENT

Introductory Pricing

Hammerhead 2" tool, hose & oiler: \$3527.00

Hammerhead 3" tool, hose & oiler: \$5023.00

Hammerhead 4" tool, hose & oiler: \$6153.00

Call for demo or additional pricing

*Prices plus tax. Pricing shown is for standard replaceable head units.



Northern California
800-510-6262

Central California
800-350-2595

Southern California
800-491-9004



Ditch Witch[®]
GROUNDBREAKING[™]
Vacuum Excavation
Systems

Ditch Witch Bay Area
Newark, Ca.

Ditch Witch Central Cal
Fowler, Ca.

Ditch Witch Southern Cal
Corona, Ca.

Ditch Witch El Cajon
El Cajon, Ca.

866-382-3686

www.calditchwitch.com

JOSHUA BASIN WATER DISTRICT
SUPPLEMENTAL DATA SHEET

Regular Meeting of the Board of Directors

April 18, 2012

Report to: President and Members of the Board
From: Jim Corbin, Distribution Supervisor



TOPIC: PURCHASE OF REPLACEMENT VEHICLES

RECOMMENDATION: That the Board take the following action:

- 1) Authorize the purchase of three Toyota Tundras from I-10 Toyota at a cost of \$96,966;
- 2) Authorize the expenditure of \$102,000 from the equipment replacement fund for the purchase and customization; and
- 3) Authorize the sale of 7 vehicles on the attached list to an auction house to be determined by staff.

ANALYSIS: Four Toyota Tundra trucks are ready to be replaced under the District's vehicle replacement policy because they exceed the District's criteria for replacement due to the maintenance, age, and mileage factors. We recommend the replacement of three trucks now and deferral of the fourth until we fill a staff vacancy that would use the fourth truck.

During the previous truck purchases the Board directed that all Toyotas be purchased because they were rated highly for reliability and maintenance, and to standardize the fleet for purchasing parts and supplies and similar considerations. Current outside evaluations appear to continue to support the Board's policy. A JD powers and Associates "Dependability study," attached, rates 3 different truck manufacturers with Toyotas as the highest rating. IntelliChoice also gave an "above average" standard ranking of the Toyota. See attached. The auto repair shop used by the District has submitted the attached letter opining that Toyota requires a lower level of maintenance.

Staff obtained Government fleet quotes from Toyota, Dodge and Ford. Please keep in mind that absolute comparisons are seemingly impossible due to differences in features; however staff has been relentless in trying to obtain the closest comparison possible among the three manufacturers. Based on our comparisons Toyota's pricing comes in at \$2,858.42

higher than the lowest of the 3 quotes and \$774.90 higher than the mid ranged quote. In addition to the above costs, there will be costs of customizing the vehicles to change radios, add the District logo, install light bars, and similar costs estimated at \$5,000 which will also come from the vehicle replacement fund.

It should also be noted that Toyota responded immediately to request for bids, while it required three attempts over a month period before proposals were received from the other vendors. During that time the Toyota vendor had to resubmit multiple comparative quotes due to changes in rebates and incentives over that period.

In addition to the four vehicles noted above, the District previously declared surplus three vehicles noted on the attached list. One of those has been used intermittently but can now be sold.

Staff has found the Toyotas to be well-suited to the job they are intended to do, and recommends continuing with the Board policy of purchasing Toyotas.

2012 VEHICLE REPLACEMENT

Vehicle	Make	Model	Year	Mileage	Typical Vehicle use	Repair Expense (YTD)	Government Quote #1 I-10 Toyota	Government Quote #2 Yucca Valley Ford center	Government Quote #3 Yucca Valley Dodge	Overall Rating/District Policy VRP	Comments
8	Toyota	Tundra	2002	113384	Field Service Tech, CS, Meter reading, Service Orders/Distribution	\$6,655.56	\$32,322.00	\$29,464.00	\$31,547.03	17	
19	Toyota	Tundra	2005	103938	Pump Plant, Well/Booster Reservoir Run	\$11,007.80	\$32,322.00	\$29,464.14	\$31,547.03	15	
21	Toyota	Tundra	2005	81390	Pump Plant, Well/Booster Reservoir Run	\$15,917.95	\$32,322.00	\$29,464.14	\$31,547.03	15	
20	Toyota	Tundra	2005	71217	Pump Plant, Well/Booster Reservoir	\$11,498.58				13	Next truck slated for Replacement
22	Ford	F-450	2007	57167	Distribution, leaks, new SVC, Fire Hydrant/valve Maintenance						
23	Ford	F-450	2007	50420	Distribution, leaks, new SVC, Fire Hydrant/valve Maintenance						
26	Toyota	RAV 4	2007	20222	Various departments, Distribution, Pool Vehicle						
24	Toyota	Tacoma	2008	48924	Field Service Tech, CS, Meter reading, Service Orders						
25	Toyota	Tacoma	2008	28287	Pump Plant Supervisor						
16	Int'l	Dump Truck	1994	20631	Distribution, Pumping Plant						

2012 VEHICLE SURPLUS LIST

Vehicle	Make	Model	Year	Mileage	Typical Vehicle use	Repair Expense (YTD)	Government Quote #1 I-10 Toyota	Government Quote #2 Yucca Valley Ford center	Government Quote #3 Yucca Valley Dodge	Overall Rating/District Policy VRP	Comments
5	Ford	Flat bed	1991								Ready for Surplus
VIN 1923	Ford	F-150	1998								Ready for Surplus
4	Toyota	Tacoma	2002								Ready for Surplus
6	Toyota	Tacoma	2002								Ready for Surplus
8	Toyata	Tundra	2002								Surplus upon Board Approval
19	Toyata	Tundra	2005								Surplus upon Board Approval
21	Toyata	Tundra	2005								Surplus upon Board Approval



COPY
Item 1

- Powertrain Dependability
- Body and Interior Dependability
- Feature and Accessory Dependability
- Overall Dependability

Award Recipient Toyota Tundra

5
5
4
5

Chevrolet Silverado HD	Chevrolet Silverado LD	Ford F-150 LD	Ford F-250/F-350 Super Duty	GMC Sierra HD	GMC Sierra LD	Nissan Titan	Rank
4	4	3	2	5	3	2	4
3	5	3	4	3	3	2	2
3	3	5	5	5	4	4	2
4	4	4	3	4	3	2	2

*Please note that jdpower.com Ratings may not include all information used to determine J.D. Power and Associates awards. [Learn more about how J.D. Power Circle Ratings are calculated.](#)

Scoring Legend

- 5 Among the best
- 4 Better than most
- 3 About average
- 2 The rest

[About Powercircle Ratings](#)

COPY

Powertrain Dependability
 Body and Interior Dependability
 Feature and Accessory Dependability
 Overall Dependability

Award Recipient Toyota Tundra

5
 5
 4
 5

Nissan Titan	Ram 1500 LD	Ram 2500/3500 HD
2	4	2
2	2	3
4	2	3
2	2	2

*Please note that jdpower.com Ratings may not include all information used to determine J.D. Power and Associates awards. [Learn more about how J.D. Power Circle Ratings are calculated.](#)

Scoring Legend

- 5 Among the best
- 4 Better than most
- 3 About average
- 2 The rest

[About Powercircle Ratings](#)



Part of the **IntelliChoice** Automotive Group

COPY

Item 5

Home New Cars Toyota Tundra 2012 Double Cab Limited 5.7 4WD Short Bed 4Dr Extended

2012 Toyota Tundra Double Cab Limited 5.7 4WD Short Bed 4Dr Extended Comparisons



Fuel: 13 mpg city / 17 mpg hwy
MSRP: \$41,060

The 2012 Toyota Tundra is carried over from last year with no major changes. This year's models feature revised ordering information, which helps simplify the option packages for consumers. A new Chrome Package is offered on Double Cab and CrewMax models. The Limited trim level and the TRD Rock Warrior package both feature a standard back-up camera. Three engine choices are available in the line-up, a 4.0L, 4.6L and 5.7L V8. The entire model line features standard heavy duty battery and starter, as well as front wiper de-icer, front and rear mud-guards, and heated power sideview mirrors. A Work Truck package is offered for owner's requiring a basic truck with generous cargo and towing capacity. Conversely, the Platinum Package offers numerous luxury amenities such as heated/ventilated seats and woodgrain interior trim.



SAVE TIME & MONEY!
NO OBLIGATION!
NO HAGGLE PRICING!

Select Trim Options: Toyota Tundra 2012 Double Cab Limited 5.7 4WD Short Bed 4Dr Extended

Ownership Pricing Awards Rebates Specs Safety Features Compare Media Classifieds

2012 Toyota Tundra Double Cab Limited 5.7 4WD Short Bed 4Dr Extended Competitors

Compare the new 2012 Toyota Tundra Double Cab Limited 5.7 4WD Short Bed 4Dr Extended with competitors from other car manufacturers. With this tool you can view side-by-side 2012 Toyota Tundra Double Cab Limited 5.7 4WD Short Bed 4Dr Extended comparisons of up to three competitor car models' pricing, engine and horsepower, gas mileage, safety features, ownership costs, and more.

	Next 2			
Year	2012	2012	2012	2012
Make	Toyota	Ford	Chevrolet	
Model	Tundra	F150	Silverado 1500	
Trim	Double Cab Limited 5.7 4WD Short Bed 4Dr Extended	Regular Cab XL 4WD Long	Extended Cab LTZ 4WD S	
MSRP	\$41,060	\$27,935	\$39,205	
Destination	\$985	\$995	\$995	

~~NO Dodge~~

IntelliChoice Awards

BOVY	Winner	-	-
Best Deals	Winner	-	-
Motorist Choice	-	-	-
Smart Choice	Winner	Winner	-

5 Year Cost of Ownership

Depreciation	\$20,047	\$16,525	\$24,193
Financing	\$3,647	\$2,609	\$3,510
Insurance	\$8,145	\$6,935	\$7,005
State Fees	\$682	\$542	\$627
Fuel	\$18,538	\$16,879	\$15,501

COPY

Maintenance	\$1,868	\$1,443	\$1,679
Repairs	\$695	\$879	\$574
Total 5 Year Cost	\$53,622	\$45,812	\$53,089
Hybrid Tax Credit	\$0	\$0	\$0
5-Year Cost of Similar Vehicles	\$55,880	\$46,796	\$54,564
Difference	-\$2,258	-\$984	-\$1,475
Value Rating	Above Average	Average	Average

Safety

Headlight Wiper/Washers	N/A	N/A	N/A
Front Wipers, Variable Intermittent	Std	Std	Std
Heated Wiper/Washers	N/A	N/A	N/A
Rear Wiper	N/A	N/A	N/A
Internal Emergency Trunk Release	N/A	N/A	N/A
Tire Pressure Monitoring System	Std	Std	Std
Theft Deterrent System	Std	Opt	Std
Traction Control	Std	Std	Std
Adjustable Pedals	N/A	N/A	Pkg
Parking Distance Control	Std	N/A	Opt
Integrated Turn Signal Mirrors	Std	N/C	Std
Heated Outside Mirrors	Std	Opt	Std
Foldaway Mirrors	N/A	N/A	Std
Power Mirrors	Std	Opt	Std
Auto Tilt Down Mirrors	N/A	N/A	Std
Auto Dimming Mirrors	N/A	N/A	Std
Auto Day/Night Mirror	Std	N/A	Std
Memory Mirrors	N/A	N/A	N/A
Hill Decent Control	N/A	N/A	N/A
Rear Fog Lights	N/A	N/A	N/A
Front Fog Lights	Std	Opt	Std
Daytime Running Lights	Std	N/A	Std
Limited Slip Differential	Std	Opt	N/A
Rear Window Defroster	Std	Opt	Std
Engine Immobilizer	Std	N/A	N/A
Integrated Child Safety Seat	N/A	N/A	N/A
Child Safety Locks	Std	N/A	Std
Child Safety Seat Anchors	Std	Std	Std
Rear View Camera	Std	N/A	Opt
Brake Assist	Std	N/A	N/A
Side Air Bag(s)	Std	Std	Std
Knee Air Bag	Std	N/A	N/A
Passenger Air Bag	Std	Std	Std
Driver Air Bag	Std	Std	Std
Head/Curtain Airbag	Std	Std	Std
HID Headlights	N/A	N/A	N/A
Rear Airbag	Std	N/A	N/A
Rear Curtain Airbag	Std	N/A	N/A
Rear Side Airbag	N/A	N/A	N/A
Remote mirrors	N/A	N/A	N/A
Stability Control	Std	Std	Std

Powertrain and Performance

Trans Speeds	6	6	6
Transmission Type	Automatic	Automatic	Automatic

COPY

Transmission Name	Transmission, 6 Speed Automatic w/Sequential Mode	Transmission, 6 Speed Automatic	Transmission, 6 Speed Automatic H D w/Overdrive
Standard MPG	13/17	16/21	15/21
Fuel Type	Unleaded Regular	Unleaded Regular	Unleaded Regular
Fuel Delivery System	Electronic Fuel Induction	Sequential Fuel Induction	Sequential Fuel Induction
Bore x Stroke	3.70x4.02	3.76x3.41	3.78x3.62
Compression Ratio	10.20	10.50	9.90
Number of Valves	4	4	2
Number of Cylinders	8	6	8
Cylinder Configuration	N/R	N/R	N/R
Camshaft	Dual Overhead Cam	Dual Overhead Cam	Overhead Valve
Torque	401@3600	278@4000	335@4000
Horsepower	381@5600	302@6500	315@5200
Engine Size	5.70	3.70	5.30
Engine Type	Gas	Ethanol/Gas	Ethanol/Gas
Engine Name	Engine V8, 5.7 Liter	Engine V6, Flex Fuel, 3.7 Liter	Engine V8, Flex Fuel, 5.3 Liter

Dimensions and Capacities

Fuel Capacity	26.40	36.00	26.00
Towing Capacity (Std/Max)	9800	11300	10400
Payload Capacity (Std/Max)	1620	1900	1726
Tonnage	1/2 Ton	1/2 Ton	1/2 Ton
GVWR	7100	6950	7000
Cargo Capacity (Std/Max)	N/R	17.40	N/R
Curb Weight	5480	4993	5274
Ground Clearance	10.40	N/R	11.80
Rear Legroom	34.7	N/R	34.3
Front Legroom	42.5	41.4	41.3
Rear Shoulder Room	65.70	N/R	65.30
Front Shoulder Room	66.60	66.60	65.20
Rear Headroom	38.70	N/R	39.20
Front Headroom	40.2	41.0	41.2
Wheelbase	145.7	144.5	143.5
Height	76.2	75.8	73.7
Length	228.7	231.7	230.2
Width	N/R	78.9	N/R
Seating Capacity (Std/Max)	5/5	3/3	5/5

Convenience

Government Ratings

IIHS Roof Strength	Good	N/R	Marginal
IIHS Rear Crash	Good	N/R	Acceptable
IIHS Best Pick	1	N/R	N/R
IIHS Overall Side Crash	Good	N/R	Acceptable
IIHS Overall Front Crash	Good	N/R	Good
NHTSA Rating Rollover	4	3	4
NHTSA Rating Overall	N/R	N/R	N/R
NHTSA Rating Rear Side	5	Not Rated	5
NHTSA Rating Front Side	5	5	5
NHTSA Rating Front Passenger	3	3	4
NHTSA Rating Front Driver	4	4	5

Interior

Exterior

COPY

*Item
3*

CANYON AUTO SERVICES INC

62-762 29 PALMS HWY JOSHUA TREE CA. 92252
MAILING ADDRESS: HC 1 BOX 544 JOSHUA TREE CA 92252
OFFICE PH# 760-366-8400 FAX # 760-366-1150

TO JOSHUA BASIN WATER DISTRICT:

TO WHOM IT MAY CONCERN:

IT'S BEEN BROUGHT TO OUR ATTENTION THAT YOU ARE CURRENTLY
LOOKING TO PURCHASE NEW VEHICLES FOR YOUR FLEET. WE SERVICE MANY
FLEETS THROUGHOUT THE UPPER AND LOWER DESERT AREA. SOME GO WITH
FORDS, OTHER WITH DODGE, AND ONE THAT HAS CHEVY ONLY PICKUPS.

IT'S BEEN OUR EXPERIENCE MAINTAINING AND REPAIRING ALL THESE TYPES
OF VEHICLES LISTED ABOVE, TOYOTA BY FAR REQUIRES THE LEAST AMOUNT
OF REPAIRS AND MAINTENANCE OVER A LONG PERIOD OF TIME AND WARE AND
TARE.

IN MOST IF NOT ALL CASES THE FLEETS WE SERVICE RUN THEIR VEHICLES
UNDER THE SAME SEVERE CONDITIONS SUCH AS HOT WEATHER, ROUGH DIRT
ROADS, LONG PERIOD OF RUN TIME ETC.

IT'S ALSO BEEN OUR EXPERIENCE THAT FORDS AND DODGES HAVE
REPEATED FRONTEND REPAIRS AND DAMAGE, AND WITH THE DODGES MILD TO
SEVERE ELECTRICAL AND COMPUTER ISSUES.

WE WOULD HOWEVER SUGGEST THAT YOU MIGHT WANT TO INVEST IN THE
LARGER SIZE TOYOTA TUNDRA AND STEER AWAY FROM THE SMALLER MIDSIZE
PICKUPS.

SINCERELY



**DAN MARKLEY
CANYON AUTO SERVICES INC.**

JOSHUA BASIN WATER DISTRICT
SUPPLEMENTAL DATA SHEET

Regular Meeting of the Board of Directors

April 18, 2012

Report to: President and Members of the Board
From: Marie Salsberry, Executive Secretary



TOPIC: ELECTION OF REGULAR SPECIAL DISTRICT MEMBER OF SAN
BERNARDINO COUNTY LOCAL AGENCY FORMATION
COMMISSION (LAFCO)

RECOMMENDATION: That the Board agree to cast a vote for one of the five
candidates for the position on the Local Agency Formation
Commission.

ANALYSIS: The San Bernardino County Local Agency Formation
Commission is conducting an election to fill the "Regular
Special District Member" commission seat.

The Commission is composed of two members of the Board of
Supervisors, two city council members and two self-governed
special district board members.

Letters of interest were submitted by five candidates and are
attached here for your consideration.

A roll call vote is required for this action.



**Mojave
Water
Agency**

13846 Conference Center Drive ♦ Apple Valley, California 92307
Phone (760) 946-7000 ♦ Fax (760) 240-2642 ♦ www.mojavewater.org

March 19, 2012

Ms Kathleen Rolling-McDonald
Executive Officer
Local Agency Formation Commission
215 North "D" Street, Suite 204
San Bernardino, CA 92415-0490

Dear Ms. Rollings-McDonald:

It is my desire to seek reappointment to serve as a Regular Special Districts' member on the Local Agency Formation Commission. My experience in serving on the Commission for the past 8 years, has provided me with a good understanding of the needs of special districts within San Bernardino County. I have been a board member on the Mojave Water Agency for the past 9 years and currently serve as the Vice-President.

In this politically challenging era, knowledge and experience are essential qualities of a LAFCO commissioner. Eight years of experience on LAFCO has provided me with knowledge of complex issue involving special districts throughout the County. My involvement with the Association of San Bernardino County Special Districts as a Board member has given me a regular opportunity to interact with elected officials.

I have a Master's degree in Public Administration and a Bachelor of Science in Business Management. I possess the desire, education and experience to represent all Special Districts on the Local Agency Formation Commission. I can be reached at 760-954-4955 if there are any questions regarding my continued interest in this position.

I would be honored to continue serving as the Regular Special Districts' Member and respectfully ask for the support from my colleagues to make this a reality.

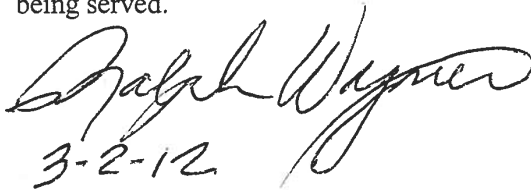
Kind Regards,

Kimberly Cox
Vice-President
Mojave Water Agency

BACKGROUND STATEMENT OF NOMINEE RALPH WAGNER

At the age of 82, I am a retired civil engineer, having practiced in the private sector for 54 years, the last 32 of which have been in the San Bernardino mountain and desert areas in the specialized field of water resources.

In 1975, I was one of the founders of a community corporation that purchased Lake Arrowhead from a development company. That community corporation (Arrowhead Lake Association) continues to operate sustainably. I served as its first president, on its Board off and on for many years, and as a consulting engineer. In 1978, I was a founder of Lake Arrowhead Community Services district (LACSD) for the purpose of acquiring the local, privately owned water company, and served as the first president of LACSD. In 1983, I led the effort to expand LACSD, in order to take over the Board of Supervisor's governed, local sanitation district. Thirty years later, I am again serving as president of LACSD. My belief has always been to foster and support collaborative and economically sustainable government at a level closest to the people being served.


3-2-12

Terry Burkhart
P O Box 3963
Landers, CA 92285
760 364 0073

Retired: Insurance Agency employment, 1966 – 2000
Various positions from file clerk to commercial dept. manager
Teacher for Insurance Education Institute, 12 years
Insurance Brokers license, 1970 to retirement

Director, Bighorn-Desert View Water Agency, 2007 to present, Board President
2010, 2011

Director, Special Districts Risk Management Authority, term 1/1/12 – 1/1/16
Board of Directors, Johnson Valley Improvement Association, 2000 – 2009
Officer and Director, Officer, North Orange County Business & Professional
Women, 1992 – 2000; Officer BPW Region 9, 1997

Co-owner: Lan Tek - Data Center Solutions

San Bernardino County resident, Johnson Valley, 2000 to present; part time 1991 –
2000

Southern California resident 1946 to present

RECEIVED
FEB 28 2012

LAFCO
San Bernardino County



HESPERIA

Recreation & Park District

... Serving the Community Since 1957

Post Office Box 401055 • Hesperia, California 92340-1055 • (760) 244-5488

February 24, 2012

Local Agency Formation Commission
215 North "D" Street, Suite 204
San Bernardino, CA 92415-0490

Attention Special Districts Selection Committee

The Hesperia Recreation and Park District would like to nominate Mrs. Rebekah Swanson for the Regular Special District Member position held by Kimberly Cox. Mrs. Swanson is an elected member of the Board of Directors for the Hesperia Recreation and Park District.


The following is a brief bio on Mrs. Swanson:

- Hesperia Resident for 23 years - since 1989
- Hesperia Recreation and Park District Board Member since 2006
- Employed by the Hesperia Unified School District from 1985 to present
- Founding President of the Hesperia Friends of the Library
- Elementary Director on the Executive Board for the Hesperia Teachers' Association
- Hesperia Tri-Agency Committee Member since 2007

Enclosed is the completed Nomination for Regular Special District Member, Member of the Local Agency Formation Commission Form, nominating Mrs. Rebekah Swanson to serve on the Local Agency Formation Commission.

Sincerely,

HESPERIA RECREATION AND PARK DISTRICT



Lindsay Woods
General Manager

LW:rt

Enclosure



PO Box 3347, 777 Cottonwood Drive, Crestline, CA 92325-3347
Telephone: (909) 338-1727 «» FAX: (909) 338-4080

March 9, 2012

Special District Members,

I ask for your vote and for your support for a well-balanced Local Agency Formation Commission, with representatives that reflect the diversity of its constituents, especially its special district members.

I know you are aware of LAFCO's excellent policy to strive for a *regional* balance on the Commission between the desert, valley and mountain areas. Unfortunately, that balance has not always been achieved. As a mountain resident who has followed County planning issues for over 10 years now, I am keenly aware that the realities of our local conditions are not always appreciated by those who work and plan elsewhere in our County.

Just as important to me as regional diversity, I believe diversity of "scale" on the Commission should also be a priority, especially for the Special District representatives. The interests and challenges of smaller districts like Crestline Village Water are not always shared by those who deal with larger budgets and larger functions and services.

Size is especially important today, with current state policies strongly encouraging service district consolidations. I believe it will be increasingly important to have voting Commission representatives that appreciate the differences between the needs and perspectives of varying sized districts as well as varying regional districts.

I do believe every district is different. And every situation is different. I am from the mountains yes, but I appreciate that mountain experiences may not translate directly to another situation. Therefore, any item that comes before the LAFCO Commission, needs to be evaluated independently and carefully, and not just from the perspective of what's the most "efficient" solution.

For the last 10 years I have used the analytical skills I learned from a 25-year career in IT management and consulting to extensively participate as a private citizen in many of our area's local government processes (including LAFCO actions and the County's 2007 General Plan Update). I regularly attend the board meetings of multiple agencies. These experiences have given me a valuable education in Special District and service issues. As President of our water district now, and as a strong advocate for more participation in our government, I am ready to directly contribute to County planning as a member of LAFCO.

If elected, I will serve the best interests of the entire County and its residents. I will strive to express and consider the special concerns and perspectives of not just the Mountain region where I reside, but also the importance of our smaller districts as well.

I strive for excellence and will always act and represent Special Districts fairly, thoughtfully and capably.

Sincerely,

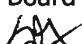
A handwritten signature in black ink that reads "Steven Farrell". The signature is written in a cursive style with a large, prominent "S" and "F".

Steven Farrell
President
Crestline Village Water District

JOSHUA BASIN WATER DISTRICT
SUPPLEMENTAL DATA SHEET

Regular Meeting of the Board of Directors

April 18, 2012

To: President and Board of Directors
From: Susan Greer 

TOPIC: Adopt Resolution 12-886 Consenting to Join the Health Benefits Program of the ACWA Joint Powers Insurance Agency, Ratifying the Action of the Health Benefits Authority (HBA) Board of Directors to Terminate the HBA Joint Powers Agreement.

RECOMMENDATION: Adopt Resolution 12-886

ANALYSIS: The District currently provides employee health care benefits via the ACWA Health Benefits Authority (HBA). The HBA has proposed transitioning its operations and health benefits programs into the ACWA/Joint Powers Authority (ACWA/JPIA). The HBA will be dissolved and all existing programs will remain unchanged. This is the same issue presented by Andy Sells of AWA/JPIA at the 3/21/12 Board meeting.

The HBA and ACWA/JPIA share many of the same goals and serve many of the same members, with more than 2/3 of the combined membership participating in both programs. The combination of the programs will reduce overall costs and improve operations. Costs will be monitored and the most effective way to pass any savings along to the members will be determined over time.

The HBA bylaws require that 75% of the HBA members must agree to the change within 90 days. The attached resolution has been prepared in the format required by the HBA. The signed resolution is requested by April 30 and no later than May 31. Failure to adopt the resolution may result in loss of coverage

A Frequently Asked Questions list, prepared by ACWA is also attached.

FISCAL IMPACT: No additional cost; should result in savings

RESOLUTION NO. 12-886

RESOLUTION CONSENTING TO JOIN THE HEALTH BENEFITS PROGRAM OF THE ACWA JOINT POWERS INSURANCE AUTHORITY, RATIFYING THE ACTION OF THE ACWA HEALTH BENEFITS AUTHORITY BOARD OF DIRECTORS TO TERMINATE THE HEALTH BENEFITS AUTHORITY JOINT POWERS AGREEMENT, AND AUTHORIZING AND DIRECTING THE GENERAL MANAGER TO EXECUTE ALL NECESSARY DOCUMENTS

WHEREAS, this Agency entered into a joint exercise of powers agreement ("HBA Agreement") with the Association of California Water Agencies Health Benefits Authority ("HBA") in order to pool its purchasing needs with other public agencies desiring to provide their employees with comprehensive and economical health and welfare benefits; and

WHEREAS, this Agency entered into a Health Benefits Memorandum of Understanding ("MOU") to enroll in specific health programs and ancillary programs ("Existing Employee Benefits Coverage") offered by HBA and agreed to abide by: (1) the HBA Agreement; (2) all rules and procedures established by HBA in the administration of the Agency's Existing Employee Benefits Coverage; and (3) all underwriting, eligibility, and contribution requirements in Appendix A to the MOU; and

WHEREAS, this Agency entered into a joint exercise of powers agreement ("JPIA Agreement") with the Association of California Water Agencies Joint Powers Insurance Authority ("JPIA") in order to pool its purchasing needs with other public agencies desiring to obtain comprehensive and economical public liability, workers' compensation, unemployment, health, accident and/or dental, or property coverage; and

WHEREAS, JPIA is both qualified and authorized by the laws of the State of California to administer the Existing Employee Benefits Coverage to this Agency through JPIA's Employee Benefits Program; and

WHEREAS, during a noticed special meeting held on February 6, 2012, the HBA Board of Directors unanimously voted to transfer all HBA operations and administrative functions to JPIA on or about July 1, 2012, and to pursue a merger of the two public agencies after which the HBA Agreement would be terminated; and

WHEREAS, pursuant to Article 22 of the HBA Agreement, the HBA Agreement may be terminated by the HBA Board of Directors subject to ratification by the written consent of three-fourths of the HBA Member agencies within 90 days of the HBA Board's action, provided, however, that HBA and the HBA Agreement shall continue to exist for the purpose of concluding all functions necessary to wind up HBA's affairs; and

WHEREAS, during a noticed regular meeting held on March 28, 2012, the HBA Board of Directors approved HBA Resolution 12-03-02: (1) electing to terminate the HBA Agreement pursuant to Article 22 of the HBA Agreement and, except as provided in clause 2 below, said termination shall become effective upon ratification by the written consent of three-fourths of the HBA member districts and agencies; (2) recognizing that pursuant to Article 22 of the HBA Agreement, HBA and the HBA Agreement shall continue to exist for the purpose of winding up and dissolving the business affairs of HBA, and acknowledge that the HBA Board of Directors is vested with all powers of HBA for doing the same; and (3) declaring that Resolution 12-03-02 shall take effect on April 1, 2012, thereby beginning the 90-day ratification period.

NOW, THEREFORE, BE IT RESOLVED that the Directors of Joshua Basin Water District hereby:

1. Agree that the HBA Memorandum of Understanding referred to in the recitals above is incorporated in this resolution by reference.
2. Consent to join JPIA's Employee Benefits Program and acknowledge, represent, and agree that all terms and conditions of the HBA Memorandum of Understanding apply to the provision of this Agency's Existing Employee Benefits Coverage through JPIA.
3. Authorize and direct this Agency's General Manager to cooperate fully with HBA and JPIA in the execution of any other documents and in the completion of any additional actions that may be necessary or appropriate for the purpose of ensuring that this Agency's Existing Employee Benefits Coverage continues without lapse through JPIA.
4. Ratify the action of the HBA Board of Directors to terminate the HBA Agreement, to be effective as provided in Article 22 of the HBA Agreement.
5. Direct the Secretary of the Board of this Agency to immediately send a certified copy of this resolution to: Association of California Water Agencies Health Benefits Authority, 4600 Northgate Blvd, Suite 100, Sacramento, California, 95834.

PASSED AND ADOPTED by the Directors of Joshua Basin Water District this 18th day of April 2012, by the following vote:

President Mike Reynolds	_____
Vice President Mickey Luckman	_____
Director Paul F. Coate	_____
Director William C. Long	_____
Director Gary Wilson	_____

Mike Reynolds, President

Attest by: Joe Guzzetta, Board Secretary

HBA – ACWA/JPIA Transition

Frequently Asked Questions

What is being proposed?

The ACWA Health Benefits Authority (HBA) has proposed transitioning its operations and health benefits programs into the ACWA/Joint Powers Insurance Authority (ACWA/JPIA). HBA would be dissolved and all of the assets and liabilities would be transferred to ACWA/JPIA. All of HBA's existing programs and offerings would remain unchanged.

What are the benefits of this transition?

HBA and ACWA/JPIA share many of the same goals, including member service, promoting employee health, keeping costs down and creating value for members. Transitioning HBA into ACWA/JPIA will allow the two organizations to combine resources, reduce overall costs and improve operations. Potential cost savings would be passed on to all agencies that participate in programs offered by HBA and ACWA/JPIA. With more than two-thirds of the combined membership participating in both programs, the transition will also help eliminate confusion regarding the responsibilities of each.

What steps are needed to make the transition happen?

In order to proceed with the transition, HBA must secure the concurrence of 75% of HBA members within the 90-day window specified in HBA's bylaws. That must be achieved by July 1, 2012. The following steps must be taken to ensure a seamless transition and to retain the employee benefits currently provided by HBA:

1. Adopt a resolution. The board of directors of each HBA member agency must adopt a resolution consenting to join the Employee Benefits Program of the ACWA / Joint Powers Insurance Authority and ratifying the action by the HBA Board of Directors to terminate the Health Benefits Authority Joint Powers Agreement. The resolution should be placed on agencies' agendas as soon as possible.

2. Return the signed resolution. HBA is requesting the signed resolution by April 30, 2012, (or sooner) and no later than May 31, 2012. Resolutions should be mailed to:

ACWA HBA
4600 Northgate Blvd., Suite #100
Sacramento, CA 95834

What is the timeline for the transition?

- **April 1:** Start of the 90-day period in which at least 75% of the HBA membership provides written consent to dissolve
- **First week of April:** Information kit with required resolutions mailed to HBA members; HBA staff to follow-up with HBA members
- **April 18:** ACWA/JPIA and HBA staff will conduct a webinar at 10 a.m. for members to review information and ask questions
- **May 8:** ACWA/JPIA and HBA staff will conduct a seminar at 10 a.m. at the ACWA Spring Conference in Monterey
- **May-June:** Staff to follow-up with HBA members to send required resolutions to HBA
- **July 1:** Target date to complete transition

If approved, when will the change become effective?

If 75% of HBA membership approves, the transition becomes effective July 1, 2012.

What specific steps do the board of directors for each current HBA member need to take?

The governing board of each member agency needs to adopt the provided resolution and return to HBA by May 31, 2012. Sample resolutions are available on the transition website, www.hba-transition.com.

What if my district doesn't return the resolution?

Failure to return the signed resolution by June 29, 2012, may result in loss of coverage for district employees.

How will the potential cost savings for members be distributed among participating members?

While cost savings are expected, it is too early to say with specificity how the savings will be distributed to the membership. ACWA/JPIA will be monitoring all costs and potential savings and will determine the most effective way to pass them on to participating members. Information will be shared with members as it becomes available.

Will this change result in a cost or risk increase for ACWA/JPIA members?

No. Each program in the ACWA/JPIA is maintained and funded separately from the other programs. The Employee Benefits Program will operate as in the past and be a separate program.

Will this transition require a change to the current ACWA/JPIA structure, board composition or policies?

The only change to the ACWA/JPIA structure will be an increase in the number of board members to accommodate HBA members that are not currently ACWA/JPIA members. The Employee Benefits Program will be added to ACWA/JPIA's governing documents, and an Employee Benefits Committee will be added.

Why wasn't this option considered as part of the recent restructuring of HBA?

The economic environment combined with the unknown impact of the proposed national health care program has changed the business model. Many of the desired goals for future services and long-term savings are already being developed at ACWA/JPIA and, as such, can now be implemented simultaneously. Recent opportunities and immediate needs have developed at both organizations which, when combined, will make both organizations stronger.

Will HBA members have access to all ACWA/JPIA programs?

Yes, but they will have to apply for and be approved by the Executive Committee. Each program requires a separate application.

Does an agency still have to be an ACWA member to receive health benefits through this new arrangement with ACWA/JPIA?

Yes. An agency must be a member of ACWA to be eligible for all ACWA/JPIA programs and services, including health benefits.

How does this transition impact ACWA?

There will be no immediate impact on ACWA on July 1, 2012. ACWA will continue to work with both HBA and ACWA/JPIA to transition the services it now provides to HBA. For the longer-term, any financial issues arising from the merger between HBA and ACWA/JPIA will be incorporated into the process to develop ACWA's 2013 budget.

What happens to the HBA board of directors?

The HBA board of directors will cease to exist when the transition is complete.

If the change is not approved, what will be the course of action?

If written concurrence of at least 75% of the HBA membership has not been received by July 1, 2012, HBA will enter into an agreement for administrative services provided by ACWA/JPIA. The 90-day process to get 75% concurrence for the transition would begin again.