

The District office will be closed in observance of Labor Day on Monday, Sept 2, 2024.

# THE METER READER

## August 2024

**Mission Statement: To provide, protect, and maintain Joshua Tree’s water - our vital community resource.**

## CONTENTS

### >>> In This Issue

Pages 2-4

- August Water Saving Tips
- Curious Minds Want to Know
- In Case You Missed It
- Farmer’s Market Booth
- Your Leadership in Action
- CIRP Update
- Plant of the Month
- Gardening Tips

### >>> Special Articles

Pages 5-11

- Elections: 4 Board Seats “Open”
- Why Pressure Regulators Matter
- Help To Others (H2O) Bill Assistance
- How to read your own meter
- Call For Art: Art Expo
- Native Plants Seed Swap Social



## agenda

### Board Meetings:

- Regular Board Meeting - 08.07.24 - 5:30 pm
- Regular Board Meeting - 08.21.24 - 5:30 pm

### Committee Meetings:

- Finance Committee - 08.14.24 - 9:00 am
- Water Resources & Ops - 08.14.24 - 11:00 am

### Classes & Events:

- Native Plant Seed Social in the JBWD Water Wise Demonstration Garden with guest speakers: August 22, 6-7 PM (see info below).

## Monthly Water Use

**MAY: 100.61 GPCD**

The measure used for reporting water conservation is called Gallons per Capita per Day (GPCD). The GPCD value reported here reflects water usage from three months earlier. California aims to achieve 42 GPCD by the year 2030.

**Keep saving, Joshua Tree!**

## »» AUGUST WATER SAVING TIPS:

August often greets us with monsoonal rains and thunderstorms. That's the good news. The bad news is that these seasonal rains can bring rushing waters that leave damaging erosion in their wake. Here are some helpful "storm water" tips:

- Walk your property and note obvious water ruts and then place rocks/boulders in the water pathway to slow rushing waters. This may allow some of the water to seep into the ground which can naturally water nearby trees and landscape. Your goal is to "slow" the moving waters, not "divert" the waters. Let nature take its course...
- If you cannot, or have not set-up a rain barrel collection system, stage simple buckets (or similar) under roof eaves to catch water run-off. Then, use it to water your plants.

## »» Curious Minds Want to Know

Enjoy the question of the month.

### Question:

Is it safe taking a shower during a thunderstorm, or is that just an old wives' tale?

### Answer:

The answer is no, it is considered *not safe*. You should avoid showering (washing dishes by hand, or just washing your hands) during a thunderstorm because it increases your risk of being struck by lightning. Water and metal pipes are dangerous conductors of electricity and the [National Weather Service](#) has reported 13 lightning deaths from these scenarios in the U.S. for the 2023 year.



## »» IN CASE YOU MISSED IT

THE ANNUAL WATER QUALITY REPORT (OR CONSUMER CONFIDENCE REPORT) WAS RELEASED IN JULY, AND IS AVAILABLE ON OUR WEBSITE AT [JBWD.COM](http://JBWD.COM), OR YOU CAN USE THIS QR CODE BELOW TO LINK DIRECTLY TO THE REPORT.



## »» JT FARMERS' MARKET

### 👣 WHAT IS YOUR WATER FOOTPRINT? 👣

Since in some way, shape, or form everything is connected to water, then it is not just the water that you directly use, but how you use everything that impacts your "water footprint". To learn more, stop by our booth at the Joshua Tree Farmers Market Saturdays in August, 8AM-1PM.

## YOUR LEADERSHIP IN ACTION <<<



At the July 17th, 2024 meeting, the Board of Directors voted 5-0 in favor of adopting Resolution 24-1065, regarding the appropriations limit for Fiscal Year 2024/2025.

In another agenda item, the Board Directors also voted 5-0 in favor of a temporary transfer of funds to the Belmont new pipeline installation project to help minimize delays.

For a comprehensive explanation of either of the above items, visit [jbwd.com](http://jbwd.com) for the July 17, 2024 Board Packet.

## >>> CIRP UPDATE

The District initiated the Capital Improvement Replacement Program (CIRP) in 2019, showcasing a dedication to maintaining the District's infrastructure.



Pictured on the left is one of three big leaks that occurred in just a little over two weeks in July on the JBWD waterline system. In the first 17 days of the month JBWD had 20 leaks with a water loss of 669 thousand gallons.

In comparison, the entire month of June there were 28 leaks, resulting in 261 thousand gallons of water lost.

>>>> The CIRP crew also began grading roads for the Belmont Project, locating utilities, and identifying any obstacles towards installation of the new pipelines with the least impact to customers and the natives. Additionally, the Water Production Department began detailed booster and well maintenance.

# August 2024 Plant of the Month

## Cimarron Sage, Blue Ranger *Leucophyllum zygophyllum*

Plant Form: Evergreen shrub  
Water Use: Low  
Mature Size: 3 ft. tall x 3-4 ft. wide  
Exposure: Full sun, reflected sun  
Bloom Time: Summer (June – Aug),  
Fall (Sept – Oct)  
Native to: Texas, Mexico, SW U.S.  
Hardiness: Cold hardy to 10°F

Cimarron Sage is a petite variety of normally much larger Texas Rangers, all known for their masses of flowers produced in response to summer and fall rains. This evergreen shrub is prized for its soft, rounded form and silvery-gray fuzzy leaves which contrast beautifully with its bluish-purple flowers. Butterflies, bees, hummingbirds, and other pollinators are attracted to the flowers. Cimarron Sage has exceptional drought tolerance, heat tolerance, cold hardiness, and is very low maintenance. Water regularly but infrequently in summer. Avoid watering in winter months except in extreme winter droughts. Allow these beauties to grow naturally – resist pruning into box-shapes or globes. While creating a denser appearance, flowers will be sacrificed, and water use will increase. Prune only lightly in late February to maintain the plant's natural form. Typically used as an accent plant, border, screen, or informal hedge, and in beds and borders, by patios, as a filler shrub, and in containers.



Alliance for Water  
Awareness and Conservation

For more information on low-water-use gardening,  
contact your local water provider or go to

[www.mojavewater.org/conservation/awac/](http://www.mojavewater.org/conservation/awac/)

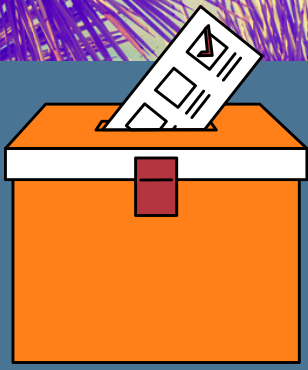
Photos © 2024 Robin Kobaly ~ Content © 2024 The Power of Plants ([www.PowerofPlants.com](http://www.PowerofPlants.com))  
Produced by The SummerTree Institute ([www.SummerTree.org](http://www.SummerTree.org))

## ➤➤➤ GARDENING TIPS FOR YOUR DESERT-SMART LANDSCAPE:

- Water before 9AM or after 6PM. Watering and grooming should be your focus this month
- Walk irrigation lines to check for clogs, leaks, and breaks
- Deadhead spent flowers, trim off dead stems and branches (save seeds for planting)
- Continue deep watering of trees and shrubs once a month
- Keep adding mulches to conserve water, keep soil and roots cool, and to reduce frequency of watering

## HISTORIC USES OF CIMARRON SAGE, BLUE RANGER:

Aside from its ornamental value, the Blue Ranger has been used in traditional medicine to treat various diseases such as diabetes, hypertension, rheumatism, and microbial infections.



# JBWD ELECTIONS: 4 BOARD SEATS OPEN



## NOTICE OF ELECTION

NOTICE IS HEREBY GIVEN that a general district election will be held in the JOSHUA BASIN WATER DISTRICT in San Bernardino County, on Tuesday, the 5th of November 2024, for the following offices:

- Member of the Board of Directors, Division 2, 2-year term, number to be elected
- Member of the Board of Directors, Division 3, 4-year term, number to be elected
- Member of the Board of Directors, Division 4, 4-year term, number to be elected
- Member of the Board of Directors, Division 5, 4-year term, number to be elected

The qualifications required to be a candidate for the above offices are: At the time nomination documents are issued, a candidate must be a registered voter residing within the district (and division).

Official candidate filing documents for eligible candidates desiring to file for the above elective offices may be obtained from the San Bernardino County Registrar of Voters, 777 E. Rialto Avenue, San Bernardino, California, starting on July 15, 2024, and filed not later than 5 p.m. on August 9, 2024, at the Registrar of Voters.

The San Bernardino County Registrar of Voters provides candidate filing documents and services by appointment. Visit <https://elections.sbcounty.gov> or call (909) 387-8300 to schedule a video conference or in-person appointment. Walk-ins are welcome but may experience some wait time.

If by 5 p.m. on August 14, 2024, only one person has been nominated or an insufficient number of persons have been nominated for the above elective offices or no one has been nominated, and if no petition requesting that the election be held has been presented to the officer conducting the election, appointments will be made as prescribed by Section 10515 of the Elections Code.

Date: July 16, 2024

Stephenie Shea, Registrar of Voters

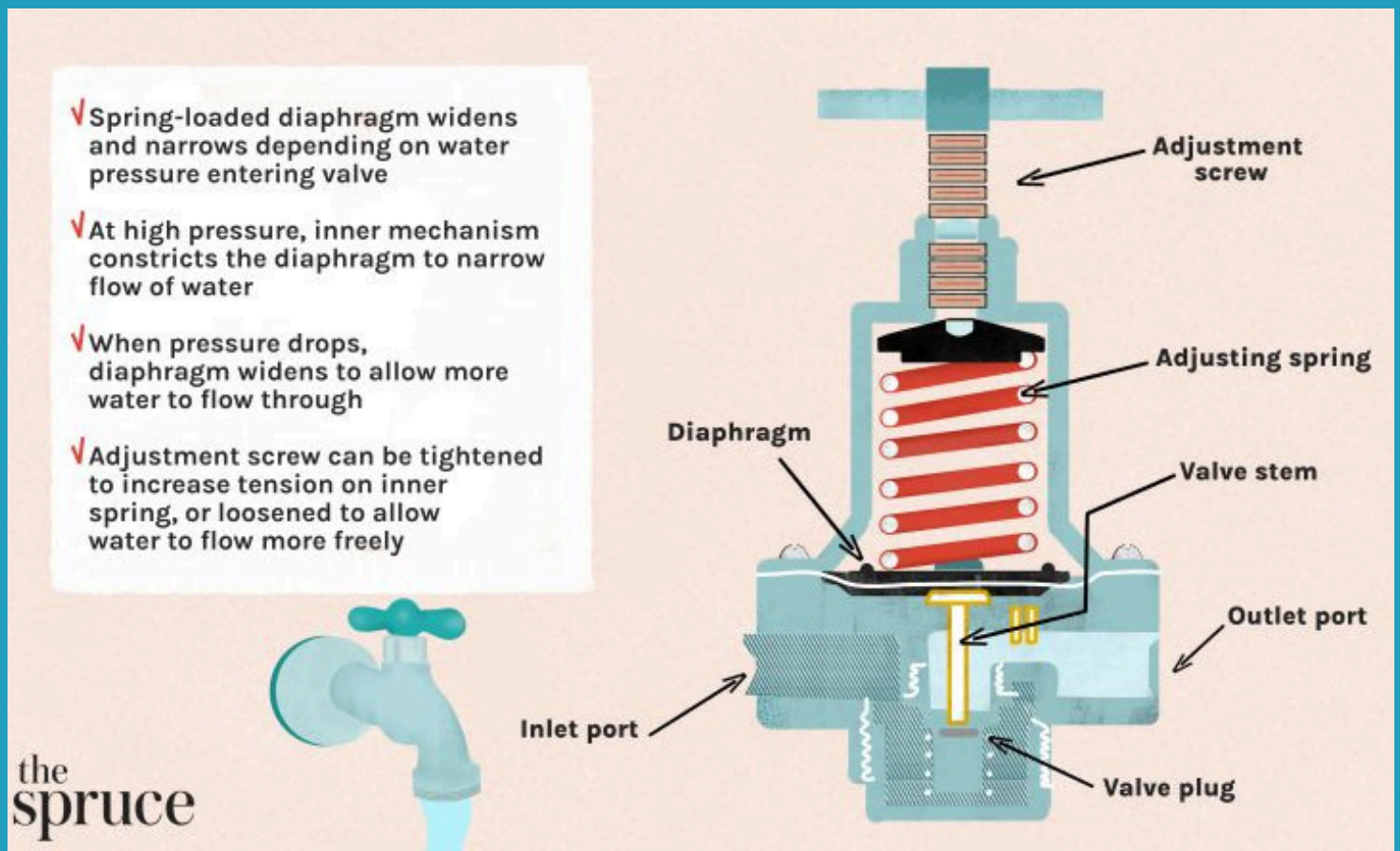
# Why Pressure Regulators Matter

A water pressure regulator is a valve that reduces the incoming water pressure to a manageable level for the home plumbing infrastructure. Water pressure regulators are installed where the main water line enters the home, just after the main shutoff valve.

Although it is not necessary for every plumbing installation, a water pressure regulator can be essential when the municipal water supply enters the home at a very high pressure or where water pressure is irregular.

If the water pressure is too high, it can cause significant damage to the valves, faucets, appliances, pipes, and plumbing fittings. When the system is protected by a water pressure regulator, there is less stress on the inner valves of appliances, faucets and shutoff valves will be less likely to leak, and fluctuations in water pressure are evened out. To learn more valuable tips, visit:

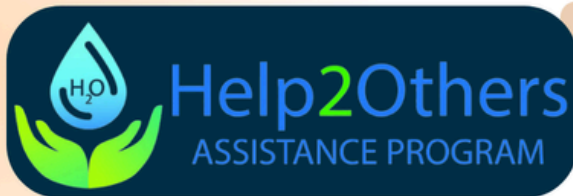
<https://www.thespruce.com/water-pressure-regulator-2718696>



# HELP 2 OTHERS (H2O)

There is never a good time to be surprised by a high water bill, and the hot summer months catch many of us off guard with bills reflective of customer water line leaks somewhere. JBWD has options that may help you navigate unbudgeted water bill surprises. Do not hesitate to come in (or call) and talk with our Customer Support Specialists *as soon as possible*, should you be faced with a water bill that exceeds your budget.

Also consider the Help 2 Others program (see chart below)!



## HELP2OTHERS Program Overview

The Help2Others (H2O) program helps eligible residential customers avoid water service shut-offs due to non-payment of amounts owed to their water utility.

### Eligibility Requirements:

- You must be a customer of a participating water agency
  - Joshua Basin Water District participates in this program.
- The water bill must be for your primary residence and in your name.
- Must meet income level guidelines

Number of People in Household	Total Max. Combined Annual Income
1 to 2	Up to \$40,880
3	Up to \$51,640
4	Up to \$62,400
5	Up to \$73,160
6	Up to \$83,920
Each Additional Person	Up to \$10,760

### Simple Documentation Requirements:

- Unexpired Driver's license, state-issued ID card, or passport for the account holder.
- Proof of gross annual household income
  - W-2s OR 2 months (60 days) of paystubs or EDD statements
  - Needed for each member of the household
- Bill statement including your account number, name, address, past due amount, and bill due date.

**\$100**  
per year!

[APPLY NOW](#) 

-----  
**Checklist Complete? Apply Here:** 

<https://inlandsocaluw.org/help2others>

Phone: (909) 751-1180



# HOW TO READ YOUR OWN METER

There's no mystery that summertime is the season for high water use, especially when you consider the increased water needs of your landscape, water recreation, evaporative coolers, and irrigation leaks.

Monitoring your water meter on a weekly basis is the quickest way to catch waterline leaks before they get out of financial control. Here's a simple diagram on how to read your water meter!

**1** Identify your meter.



**2** Locate and lift the tab to open the display.



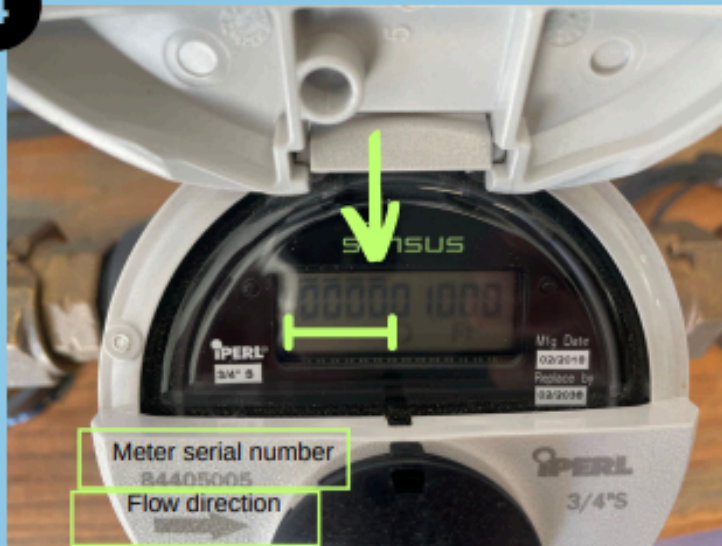
**3** Gently lift the tab to view the display area.



**4**

The arrow to the right points to where the read begins. When 748 gallons flow, it will display 1 (unit).

The 4 digits with the dashes above measure water use.



We have a meter in the lobby and we'd be happy to show you in person how to read your meter.

**Please be cautious when opening your meter box!**



**REMEMBER: ALWAYS EXERCISE CAUTION WHEN OPENING YOUR METER BOX!**

Meter boxes offer a dark, cooler environment during the hot summer months which insects and reptiles (especially snakes) find appealing!



# CALL FOR ART

GREATER JOSHUA TREE <sup>2ND ANNUAL</sup>

# ART EXPO

JURIED ART EXHIBITION+COMPETITION  
AT THE JOSHUA TREE GALLERY OF CONTEMPORARY ART

SEP <sup>\$1,500 in</sup>  
<sup>Cash Prizes</sup>

6-22 <sup>2024</sup>

“WATER IN THE DESERT”

FREE PUBLIC

GALA SEP 6  
6-9 PM



[JTGOCA.COM](http://JTGOCA.COM)



*Serious Wildcrafters Welcome!*

**Thursday, August 22, 2024  
6PM (sharp) to 7PM+**

at

**Joshua Basin Water District's  
Water Wise Demonstration Garden**

61750 Chollita Rd, Joshua Tree

**NATIVE PLANT  
SEED SWAP  
SOCIAL  
WITH GUEST SPEAKERS!**

**PLEASE BRING:**

- ✿ Native plant seeds to swap
- ✿ Your own seed envelopes
- ✿ A folding chair

**Please identify seeds on envelope(s)**