



DECEMBER 2022

September 2022 Residential Gallons Per Capita
Water Use: 70.7 Gallons

Note: Water savings data reflects water use three months in the past. Also, "gallons per capita" is the standard of "measure" for tracking water conservation efforts. **The State has determined our water use per person per day is 47 gallons by 2025, and 42 gallons by 2030. Keep saving, Joshua Tree!**



OUR MISSION STATEMENT:
To provide, protect, and maintain Joshua Tree's water - our vital community resource.

**Wishing you holiday happiness now
and throughout 2023!**



**From all of us at
Joshua Basin Water
District**



IN THIS ISSUE:

- Upcoming Events and Meetings
- December District Holidays
- December Water Saving Tip
- Meet our new Board Director
- Congratulations to our new Operations Director
- Thank you: Jim Ventura-MWA
- Welcome: Marina West-MWA

DECEMBER DISTRICT ❄️ HOLIDAYS ❄️

DECEMBER HOLIDAY CLOSURES:

December 22, 2022 Thursday
December 26, 2022 Monday
December 29, 2022-Thursday



- Water Saving Gift Ideas
- In Case You Missed It
- Curious Minds Want To Know
- December Farmers' Market Booth
- Your Leadership in Action
- C.I.R.P. Update
- December Gardening Tips and Plant of the Month

Upcoming Events and Meetings:

Regular Board of Directors meetings:

- Wednesday, Dec. 7, 5:30 PM
- Wednesday, Dec.21, 5:30 PM

Special Board of Directors meeting:

- Wednesday, Dec. 14, 9AM

All are *Virtual/ZOOM, or in person*

For Agendas, Zoom links, and other calendar items visit: www.jbwd.com

JANUARY HOLIDAY CLOSURE: January 2, 2023 -Monday

Please note: in the event of a water emergency, please contact the District Office at (760) 366-8438--our crews are always on standby 24/7!

MARK YOUR CALENDARS!



A Special public meeting is being planned on **January 10, 2023, at 5 PM** at the Joshua Tree Community Center to

discuss the proposed water rate increase. All are invited!

**You don't know its
true worth...
until it's gone.**

SAVE WATER

To learn more, contact your local water providers: Joshua Basin Water District, Bighorn-Desert View Water Agency, HI-Desert Water District, Mojave Water Agency, Twentynine Palms Water District

DECEMBER WATER SAVING TIP:

It's no surprise that this time of the year your tap water initially comes in cold, even though you turned on hot water. Try a quick experiment next time and simply place an empty 2 quart pitcher underneath your tap and run the water until it gets hot. You'll be surprised how fast that cold water can fill up the container, instead of letting it run down the drain until the hot water starts flowing.

That saved cold tap water can be used for cooking, watering house plants, cleaning, filling your pet's water dishes... Think about it. You can even keep a small bucket in your shower to do the same thing. This winter, waste less water!



COMING ON BOARD! JBWD'S DIVISION ONE DIRECTOR

Thomas Tyler Short, was newly elected to Joshua Basin Water District's Board of Directors last month. Thomas completes the District's five-member Board, replacing Rebecca Unger, who relocated out of the area last June. He was voted in by the community residing in Division One of the District's five legal Divisions (also called, "Districts").

Thomas has lived in Joshua Tree with his wife and son since 2016. He is a Marine veteran that served honorably for twelve years leaving the service as a Sergeant. He served as an engineer and recruiter.

After leaving the service he attended Colorado State University and graduated with two bachelor's degrees: one in Project Management and the other in Information Technology. Needless to say, both of these industries require a mathematical mind--an asset for a Board Member. He is a project manager by trade with years of experience leading projects to fruition.

Even though a Director holds a seat on the Board representing 1/5 of JBWD's population, they govern as a Board "unit" for the entire District.



JBWD's New Interim Director of Operations

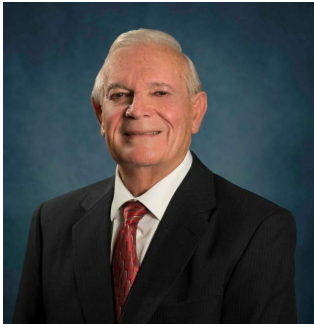
If you were ever looking for an individual that defined a career in water, look no further-- as Jeremiah Nazario represents a great example!

Jeremiah grew up in Joshua Tree, where he settled down with his wife to raise their two sons. Working in new construction as a commercial plumber, Jeremiah later began his career in the water industry in 2008, starting as a Construction and Maintenance Worker 1.

Throughout his years of service, Jeremiah has worn numerous other hats: Field Service Technician, Inventory Control, Fabrication, SCADA Monitoring (our telemetry system), Facility Maintenance and Upgrades, Development, Regulatory and Compliance, Budgeting, and Operations.

When asked about what he liked most about working in the water industry, Jeremiah replied, "The best thing about my job allows me to be the best version of me: the ability to think freely with my ideas and to support and guide my peers. Additionally, I can continue to learn and hone my skills and talents with the support from everyone."

Jeremiah Nazario defines the spirit of JBWD's staff overall. With great expectations, we welcome his leadership!



THANK YOU, JIM VENTURA--

For your 22 years of leadership as a Director on the Mojave Water Agency Board and for representing Joshua Basin Water District's needs throughout it all.

Jim has given his life in service for others, working in varied capacities in the past (i.e., former manager at SCE, and other local endeavors). He volunteered on various Morongo Basin Boards throughout the years, as well. He has a great love for the people of the Morongo Basin, and was always available when needed.

Jim is a long-time resident of Joshua Tree, and leaves his current post for a long awaited retirement. We truly wish him the best of the best, and great happiness in the years ahead!

MOJAVE WATER AGENCY:

WHO AND WHAT THEY ARE TO JBWD:

Like other State Water Project Contractors, the Mojave Water Agency (MWA) was formed in 1960 for the specific purpose of bringing supplemental water into communities that would otherwise run out of water if they relied solely on local surface and ground water supplies.

This State Agency's service area covers nearly 5,000 square miles, from Victorville and Apple Valley and Phelan northward to Red Mountain, eastward to Barstow and Newberry Springs, and southward to Joshua Tree, Yucca and Morongo Valleys.

MWA has been a reliable partner for JBWD, providing long-term hydrology resources, water for our aquifer, assistance with compliance clarification, guidance and reporting, grant opportunities, and State representation at the highest level when needed.



WELCOME, MARINA WEST--

Following in the shoes of a 22 year veteran may seem daunting to some, but not for Marina! She brings her exceptional expertise in water management to Mojave Water Agency as a newly elected Director onto their elite Board.

In addition to this major commitment, Marina navigates the complex daily activities of General Manager for the Bighorn Desert-View Water Agency, located in the northern area of the Morongo Basin.

Her skill set in hydrology and management-- for some-- has gleaned her accolades for being one of the key experts in knowledge with our local water resources.

Without a doubt, we'll be in good hands with Marina at the helm of MWA.

WATER SAVING GIFT IDEAS

'Tis the season for gifts that keep on giving! Just web search these items for loads of options!

- A pot/plate scraper
- A new low-flow shower head
- A shut-off nozzle for my hose
- A long-necked gardener's nozzle

- with shut-off device for my plants
- A toilet tank bank
- A water broom
- winterizing wrap for my pipes
- a bucket for my shower water
- a plant moisture meter
- a shower timer
- water-less car wash solution
- a rain chain for my garden
- a rain barrel to harvest rain
- a water leak sensor for my home service line
- a drip irrigation system for my garden
- live native or water wise plants for my make-over landscape project
- faux desert house plants
- a pool cover for my swimming pool
- a reusable water bottle



IN CASE YOU MISSED IT:

STAY CONNECTED!

SCAN this QR code and fill in your most current contact information so that we can make our best effort to reach out to you with any emergency water alerts that may impact you in real-time.

We can't control when things go bump in the night, but we will work hard to save our water and to keep our community safe and informed where water is concerned.

So, don't delay! Using a smartphone, open your camera app and focus on/scan the box with the dinosaur!



Nature Scapes Contest:

Don't miss out on this great opportunity to show-off your garden! To learn more, go to: [How to enter the contest](#). The deadline is December 31, 2022!



CURIOUS MINDS WANT TO KNOW:

Often, at our Farmers' Market booth or on social media, we get good questions that others may be asking. Here's more of a sample:

Q: "It is my belief that the Short Term Rental business in Joshua Tree uses up more water, what with daily laundering, cowboy tubs and long showers. Why does JBWD allow this?"

A: There are no state or county laws for Joshua Tree that currently prohibit water use in this manner.

Short Term Rentals (STRs) are held to the same water tier charges that all JBWD customers are subjected to. Granted, STRs tend to pay water fees often in the highest tier, but the District cannot single out any customer or industry unfairly by law.



OUR DECEMBER FARMERS' MARKET BOOTH

"Water Holiday Gifts"

Stop by our December Farmers' Market booth for ideas on a gift that keeps on giving: water saving gifts--and other water related ideas!

They come in all forms and costs, and when you give a gift that can help save water, it makes that present even more valuable. After all, a water saving gift can make a difference with many average monthly water bills.

So come check it out. There are ideas to fit all price ranges, down to the smallest of budgets. You might even want to consider some of these items for yourself!



YOUR LEADERSHIP IN ACTION

Recent Board Action Items of Note:

CREDIT CARD POLICY CHANGE: After a lengthy presentation from JBWD's Finance Director, and considerable debate thereafter, the Board of Directors voted 4-0 in favor of eliminating the practice of absorbing the credit card fees resulting from the customer's use of "plastic" to pay their monthly water bills. This will save the District approximately \$40,000.00 annually!

Background:

Years ago, most water bills were paid by cash or check. Occasionally, customers would opt to use a credit card, which initially was far and few between. Fast forward, "plastic" payment systems are now common, but they come with significant convenience fees that are costing all rate payers across the board an expense to absorb. Just as the District declared that, "All development must pay their own way" (so as not to encumber the rate payers) the Board felt it was not fair to ask our "community owned Water District" to like-wise, subsidize this payment option "convenience" for some customers.

Numerous payment options exist for all customers: cash, check, credit/debit, and autopay--the latter offering convenience without the hefty percentage charges common with credit cards.

Capital Improvement and Replacement Program: "C.I.R.P." UPDATE *You're water dollar\$ at work!*

PLANNING FOR FUTURE

**Our crews are on-call, rain or shine, sleet or snow,
day or night--24/7--keeping the water flowing to your**

SUSTAINABILITY

Come join the conversation...

door!

THE RECAP:

Five years ago, we planned our future water finances to see us through 2022, *including projects to replace our aged waterlines*. No one could have anticipated the financial impact a global pandemic would have caused, as well as, the current severe drought, nor the extreme inflationary economy we all have been navigating.

Due to these unanticipated economic challenges, and the continuing uncertainties that remain, JBWD began re-evaluating finances, operations, and water sustainability. In short, we call this a "rate study".

As a community-owned Water District, there will be several opportunities to learn and engage in dialogue over the future of Joshua Tree's water, so take note of the following meeting dates slated for discussion:

- **Dec. 14, 2022 9AM:** Special Board Meeting--review and finalize recommendations; move forward with Prop 218 Process
- **Jan. 10, 2023, 5:00 PM:** CAC/Community Workshop--Presentation on findings and Q & A on finalized recommendations
- **Feb. 15, 2023:** Board Meeting--Prop 218 Public Hearing and Board vote

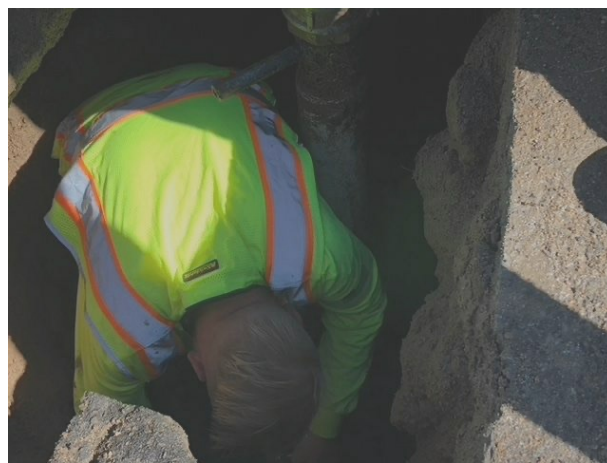


Photo Caption: Look closely and you will see a different version of a "man hole"--a leak being fixed underneath one of Joshua Tree's busiest streets: Quail Springs Road.



Photo Caption: Team work! Just another day and another leak that required half a dozen crew members, and numerous pieces of large equipment to make repairs quickly on our ever aging old pipe system. This was the Quail Springs Road leak.

DESERT-SMART GARDENING TIPS FOR DECEMBER

December Watering Schedule: Between 9:00 AM and 6:00 PM

If your landscape pipes freeze, warm them GRADUALLY with a hair dryer or space heater. Pipes that warm too fast can break. Also consider: before it is too late, winterize all exposed water pipes to retain the integrity of your entire irrigation system!

THIS MONTH IN YOUR DESERT-SMART LANDSCAPE:

Winter begins and plant growth is on hold until February

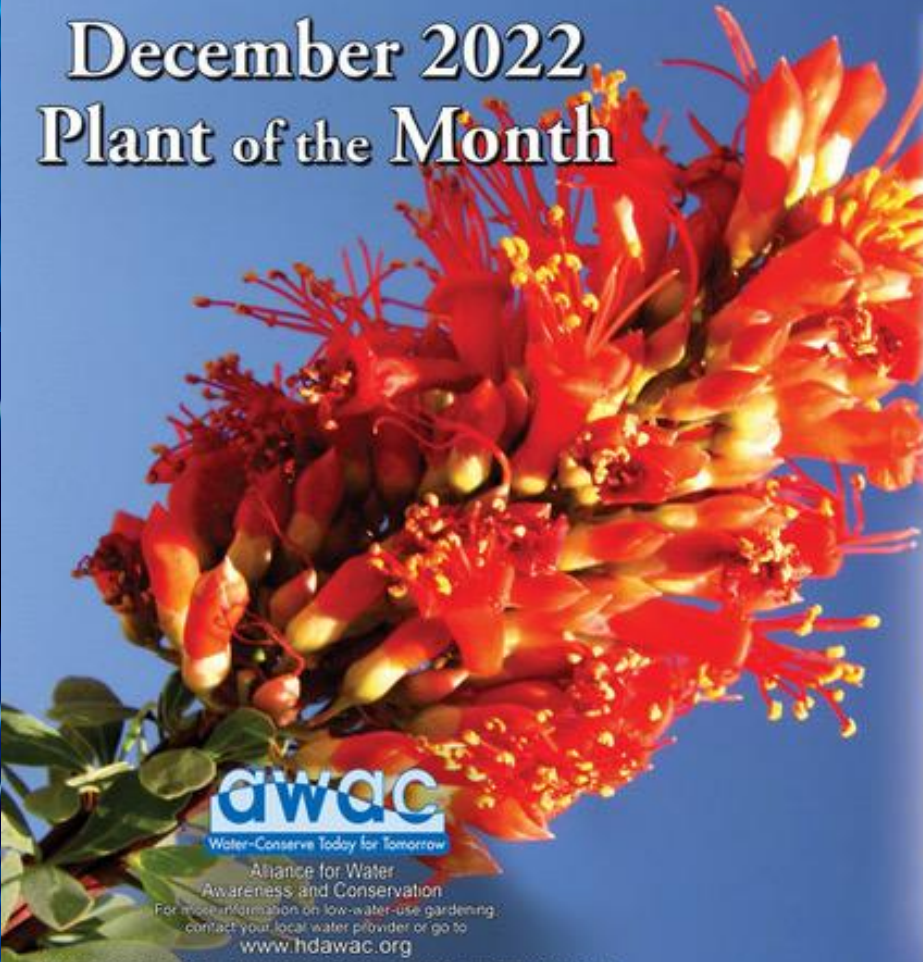
- Prune to shape evergreens like aborvitae, juniper, pines, and cypress--and save trimmings for holiday decorations
- Prune dense trees to avoid wind damage; make sure young trees are well-staked
- For overnight protection when frost threatens, cover delicate plants with large cardboard boxes, old sheets, or tarps
- Consider setting irrigation timers to off, and manually water in response to our irregular winter weather, based on winds, rain, or snow. Using the manual mode on your controller in winter

December 2022 Plant of the Month

Ocotillo
Fouquieria splendens

Plant Form: Deciduous succulent shrub
 Water Use: Very low, low
 Mature Size: 8-20 ft. tall x 5-10 ft. wide
 Exposure: Full sun, reflected sun
 Bloom Time: Spring (March - May), Summer (June - Aug)
 Native to: Southern California, southwest US, Mexico
 Hardiness: Cold Hardy to 0-10°F

Ocotillo is an iconic symbol of the southwest that forms a vase-shaped shrub with up to 100 wand-like, thorny stems that radiate from the crown. Small, oval, fleshy leaves appear after rain, persisting for weeks or even months, then fall off during drought. Bright orange-red, tubular flowers form on the tips of each cane that attract hummingbirds in late spring and early summer. While bare-root plants are available from nurseries, potted plants are more reliable (always check for legal tags and permits). Water newly-planted ocotillos frequently by lightly spraying the canes from top to bottom during summer months. No added water is needed once established, but leaves can be retained by watering twice a month over the summer. Ocotillo is stunning as an accent, especially when lit up in front of a wall, or for interesting vertical structure as a specimen, in beds and borders, hummingbird and bird gardens, or as an impenetrable hedge.



For more information on low-water-use gardening, contact your local water provider or go to www.hdawac.org

Photos © 2022 Robin Kobaly - Content © 2022 The Power of Plants (www.PowerofPlants.com) Produced by The SummerTree Institute (www.SummerTree.org)

Joshua Basin Water District | www.jbwd.com



Joshua Basin Water District | 61750 Chollita Rd. , Joshua Tree, CA 92252

[Unsubscribe sjohnson@jbwd.com](mailto:sjohnson@jbwd.com)

[Update Profile](#) | [Constant Contact Data Notice](#)

Sent by bykjradmin@gmail.com powered by



Try email marketing for free today!