



PO Box 675 • 61750 Chollita Road • Joshua Tree CA 92252
Phone (760) 366-8438 • Fax (760) 366-9528 • www.jbwd.com
An Equal Opportunity Provider

JOSHUA BASIN WATER DISTRICT
REGULAR MEETING OF THE BOARD OF DIRECTORS
WEDNESDAY FEBRUARY 6, 2013 7:00 PM
61750 CHOLLITA ROAD, JOSHUA TREE CALIFORNIA 92252

AGENDA

1. CALL TO ORDER
2. PLEDGE OF ALLEGIANCE
3. DETERMINATION OF QUORUM
4. APPROVAL OF AGENDA
5. PUBLIC COMMENT: At this time, any member of the public may address the Board on matters within the Board's jurisdiction that are not listed on the agenda. Please use the podium microphone. The Board may not discuss at length or take action on items not on the agenda.
During either "Public Comment" Item, please use the podium microphone. State your name and have your information prepared and be ready to provide your comments to the Board. The District is interested and appreciates your comments. A 3-minute time limit may be imposed. Thank you.
6. CONSENT CALENDAR: Items on the Consent Calendar are considered routine in nature and will be adopted in total by one action of the Board of Directors unless any Board Member or any individual or organization interested in one or more consent calendar items wishes to be heard.
 - A. Approve Minutes of the January 16, 2013 Regular Meeting of the Board of Directors
7. ADDENDUM TO ENVIRONMENTAL IMPACT REPORT FOR GROUND WATER RECHARGE BASIN AND PIPELINE PROJECT
Recommend that the Board adopt the Addendum to the Final Environmental Impact Report for the Recharge Basin and Pipeline Project to reflect the re-design that occurred after approval of the Final Environmental Impact Report on September 23, 2009.
8. ADJUSTMENT IN SALARY RANGES FOR MANAGEMENT, SUPERVISORY, AND CONFIDENTIAL UNREPRESENTED EMPLOYEES
Board ad hoc JBWD Management Compensation Scales Project Committee recommends that the Board take the following action:
 - 1) Authorize an increase in the salary ranges for management, supervisory, and confidential unrepresented employees of 5.3% effective with the pay period beginning Saturday, February 9, 2013.
 - 2) Authorize an increase in the monthly cafeteria plan from \$840 per month to \$900 per month.
 - 3) Establish a policy of considering adjustments to management compensation annually when Social Security Index changes are determined by the federal government.

Pg. 1-4

Pg. 5-36

Pg. 37-40

- Pg. 41-43 | 9. INCREASE IN RATES FOR ENGINEERING CONSULTING SERVICES
Recommend that the Board authorize an increase in the rates for engineering services for Dudek Engineering, the District Engineer, as noted in the attached letter and schedule of charges.
- Pg. 44-45 | 10. REORGANIZATION OF ADVISORY COMMITTEES AND APPOINTMENT OF DIRECTORS AUTHORIZED TO ATTEND MEETINGS OF OUTSIDE AGENCIES AND ORGANIZATIONS
Recommend that the Board receive this report for information.
11. COMMITTEE REPORTS:
 A. PUBLIC INFORMATION COMMITTEE: President Luckman and Director Fuller; Kathleen Radnich, Public Outreach Consultant to report.
 B. PERSONNEL AND FINANCIAL COMMITTEE: Director Wilson and Director Fuller
 C. ENGINEERING COMMITTEE: Director Coate and Director Fuller
12. PUBLIC COMMENT
At this time, any member of the public may address the Board on matters within the Board's jurisdiction that are not listed on the agenda. Please use the podium microphone. The Board may not discuss at length or take action on items not on the agenda.
13. GENERAL MANAGER REPORT
14. DIRECTORS COMMENTS/REPORTS
15. DISTRICT GENERAL COUNSEL REPORT
16. FUTURE AGENDA ITEMS
17. CLOSED SESSION
18. ADJOURNMENT

INFORMATION

The public is invited to comment on any item on the agenda during discussion of that item.

Any person with a disability who requires accommodation in order to participate in this meeting should telephone Joshua Basin Water District at (760) 366-8438, at least 48 hours prior to the meeting in order to make a request for a disability-related modification or accommodation.

Materials related to an item on this Agenda submitted to the Board of Directors after distribution of the agenda packet are available for public inspection in the District's office located at 61750 Chollita Road, Joshua Tree, California 92252 during normal business hours.

This meeting is scheduled to be broadcast on Time Warner Cable Channel 10 on February 13 at 7:00 pm and February 20 at 7:00 pm. DVD recordings of Joshua Basin Water District Board meetings are available at the District office and at the Joshua Tree Library.

JOSHUA BASIN WATER DISTRICT
Minutes of the
REGULAR MEETING OF THE BOARD OF DIRECTORS
January 16, 2013

1. CALL TO ORDER: 7:00 PM

2. PLEDGE OF ALLEGIANCE

3. DETERMINATION OF QUORUM:

Frank Coate	Present
Victoria Fuller	Present
Mickey Luckman	Present
Mike Reynolds	Present
Gary Wilson	Present

STAFF PRESENT:

Joe Guzzetta, General Manager
Marie Salsberry, HR Manager/Administrative Specialist
Keith Faul, GIS Coordinator

CONSULTANTS PRESENT:

Gil Granito, District Counsel
Deborah Bollinger, Conservation Coordinator
Kathleen Radnich, Public Outreach Consultant

GUESTS 23

4. APPROVAL OF AGENDA

MSC Reynolds/Fuller 5/0 to approve the agenda for the January 16, 2013 Regular Meeting of the Board of Directors.

5. JBWD 50TH ANNIVERSARY

San Bernardino County Third District Supervisor James Ramos presented a Resolution from the San Bernardino County Board of Supervisors commending Joshua Basin Water District on its fiftieth anniversary. He presented a framed copy of the resolution to JBWD President Mickey Luckman. Mojave Water Agency Division 2 Director Jim Ventura presented a resolution of the Mojave Water Agency Board of Directors recognizing Joshua Basin Water District on its fiftieth anniversary.

6. PUBLIC COMMENT

None.

7. CONSENT CALENDAR

MSC Reynolds/Coate 5/0 to approve the minutes of the January 2, 2013 Regular meeting of the Board of Directors; to approve the financial report for November 2012; to approve the financial report for December 2012; and to approve the check audit report for December 2012.

8. REQUEST OF WAIVER OF FIRE HYDRANT

Director Reynolds recused himself noting that he has a long time relationship with the party requesting the waiver. GIS Coordinator Keith Faul reported. Director Wilson suggested re-testing the existing hydrant. Mrs. Doris Bridges was present and commented that she had sprinklers installed in a newly-constructed home but would not have, if she had known that a hydrant was required. Mrs. Bridges' family was also

present and commented on the project. Vice President Coate suggested using a wharf head rather than a hydrant and stated the situation needs more review.

After discussion, the following actions were taken:

MSC Wilson/Coate 4/0 (1 Abstain) to retest the hydrant for flow and bring the results back at the next Board meeting.

MSC Coate/Fuller 4/0 (1 Abstain) to table the item and discuss again at the next Board meeting.

President Luckman requested staff develop a checklist for applicants to sign and the District to keep on file.

Vice President Coate suggested that the Ad Hoc Engineering Committee meet with the General Manager and the GIS Coordinator to discuss the issue.

9. CONSERVATION REPORT

JBWD Conservation Coordinator Deborah Bollinger reported on conservation activities including progress on the “Best Management Practices” and water audits to determine water loss. She recommended the Board adopt a rate structure that encourages water conservation as required by state law. She reported that the demonstration gardens are key to the District’s public education programs, and she would like to see interpretive signs added that will help educate visitors how this type of landscaping saves water.

10. AUTHORIZATION OF AGREEMENTS FOR BIOLOGICAL, CULTURAL, AND NATIVE AMERICAN MONITORING DURING CONSTRUCTION OF RECHARGE PIPELINE PROJECT

General Manager Joe Guzzetta presented the staff report. President Luckman and Director Fuller asked for RFPs to be posted on the District website; GM Guzzetta suggested a new tab on the website for that purpose.

MSC Coate/Fuller 3/2 to approve staff recommendation to authorize an agreement with Circle Mountain Biological Consultants to provide tortoise monitoring and other biological services during the construction of the Groundwater Recharge Pipeline and Pond project at an estimated cost of \$115,000 for the pipeline and an optional \$5,000 for the pond including a 10% contingency; and to authorize an agreement with Bonterra Consulting to provide cultural resources and Native American monitoring for the project at an estimated cost of \$69,000 for the pipeline and an optional \$21,000 for the pond including a 10% contingency.

Coate	Aye
Fuller	Aye
Luckman	Aye
Reynolds	No
Wilson	No

It was noted that actual costs will depend on construction time.

11. STRATEGIC PLANNING WORKSHOP

GM Guzzetta reported and recommended Pat Caldwell as facilitator who has worked with the District in this capacity before.

MSC Reynolds/Coate 4/1 to set a date of March 14, 2013 for the annual strategic planning workshop and authorize staff to retain a facilitator to assist in the planning process, at a cost not to exceed \$2,500.

Coate	Aye
Fuller	Aye
Luckman	Aye
Reynolds	Aye
Wilson	No

12. TRIP TO WASHINGTON DC TO SEEK FUNDS FOR GROUNDWATER PIPELINE AND RECHARGE PROJECT

GM Guzzetta reported. Vice President Coate stated he sees no benefit to attending the Washington DC ACWA Conference; however he does see a benefit in meeting with representatives in Washington DC. Director Wilson noted a couple of years ago a District consultant was sent to Washington DC. Director Reynolds stated he has made the trip to meet with representatives in Washington DC and they have been valuable.

MSC Fuller/Luckman 4/1 to approve staff recommendation to authorize Vice President Coate to accompany GM Guzzetta to go to Washington DC to seek additional funds for the Groundwater Recharge Project.

Coate	Aye
Fuller	Aye
Luckman	Aye
Reynolds	Aye
Wilson	No

13. COMMITTEE REPORTS

- A. PUBLIC INFORMATION COMMITTEE: President Luckman and Director Fuller: Kathleen Radnich, Public Outreach Consultant reported that a new video monitor has been installed in the customer service lobby that displays informational videos. The local water agency bus tours and the *ABCs of Water* quarterly presentations have been discontinued. Planning for other events in cooperation with other local water agencies is underway.
- B. PERSONNEL AND FINANCIAL COMMITTEE: Director Wilson and Director Fuller: No report.
- C. ENGINEERING COMMITTEE: Vice President Coate and Director Fuller: No report.

14. PUBLIC COMMENT

None.

15. GENERAL MANAGER REPORT

GM Guzzetta reported that over the last weekend 28 customers' water had to be turned off due to frozen and broken water pipes; five of the District's water sampling stations broke including one at the District office. The landscaping irrigation system and backflow assembly near the District office also froze. There was a large mainline break on Park Boulevard due to a tree root. District employees Jeremiah, Dan and Jacob were on call and their hard work out in the cold over the weekend is appreciated.

16. DIRECTORS COMMENTS/REPORTS

President Luckman stated she planned to restructure committees and appointments that were established at the January 2nd Board meeting, and directed staff to put current committees and appointments on FPPC Form 806 for posting on the District's website. She explained that the form 806 will require updating after the committees are restructured. She stated that this process will avoid conflict of interest issues and create another layer of transparency.

Director Reynolds reported attending the Mojave Water Agency meeting where Jordan Levine of Beacon Economics gave an economic overview of the MWA area showing that home values are slowly rising. Director Reynolds thanked Deborah Bollinger for doing a great job. He stated last weekend had the coldest weather that he can remember here and reminded people to prepare their property for freezing

temperatures. He thanked Kathleen Radnich for arranging the 50th Anniversary celebration. He thanked County Supervisor James Ramos and MWA Director Jim Ventura for their presentations.

Director Fuller stated she would like the Citizens Advisory Committee to attend the strategic planning meeting. She commented the docents did a great job tonight. Director Fuller reported attending the Change of Command ceremony at the Twentynine Palms Marine Corps Air Ground Combat Center noting it was a great occasion.

President Luckman complimented staff members who were out in the dark and cold at all hours for water emergencies, stating they are extraordinary people. She stated she would like to discuss conservation pricing for water rates at a later date.

17. DISTRICT GENERAL COUNSEL REPORT

Mr. Granito stated the District should document committee and other appointments per the FPPC's "Safe Harbor" provision that was made last year, and publicly disclose the appointments, terms of appointments, and amount of compensation. The information will be posted on the District website and will absolve any conflict of interest challenge to the person or entity making the appointments.

Mr. Granito reported that the Ellis litigation has been dismissed by the Court of Appeals.

18. FUTURE AGENDA ITEMS

None requested.

19. CLOSED SESSION

The Board went to closed session at approximately 8:45 and the meeting resumed in open session at approximately 9:12. District General Counsel Gil Granito reported that the Board met in Closed Session as reflected in Item 19 of this meeting's agenda; the District's attorneys presented a status report of the matter and discussed all aspects of the matter. No reportable action was taken during the Closed Session.

20. ADJOURNMENT 9:15 PM

Respectfully submitted:

Joe Guzzetta, General Manager

The next regular meeting of the Board of Directors is scheduled for February 6th, 2013 at 7:00 pm.

JOSHUA BASIN WATER DISTRICT
SUPPLEMENTAL DATA SHEET

Meeting of the Board of Directors

February 6, 2013

Report to: President and Members of the Board
From: Joe Guzzetta, General Manager

TOPIC: ADDENDUM TO ENVIRONMENTAL IMPACT REPORT FOR
GROUND WATER RECHARGE BASIN AND PIPELINE PROJECT

RECOMMENDATION: That the Board adopt the Addendum to the Final Environmental Impact Report for the Recharge Basin and Pipeline Project to reflect the re-design that occurred after approval of the Final Environmental Impact Report on September 23, 2009.

ANALYSIS: The preliminary design for the recharge basin anticipated exporting about 175,000 cubic yards of soil offsite, requiring 8,750 truckloads to export soil. It also showed that the water level in the recharge ponds would be maintained at the original grade elevations. The initial Environmental Impact Report was based on those preliminary design features.

During the final design of the project it was determined that the earthwork could be balanced on-site eliminating 7,750 of those hauling trips for exported soil from the recharge basin. The excavated soil would be used to construct higher bank walls for the ponds.

The final engineered design provided for clay and cement to be used in the design of the berms so that water could be stored as high as three to four feet above original grade.

At the time that the Environmental Impact Report was prepared the District was considering alternative recharge basin sites and also was considering constructing the pipeline along the north side of Highway 62. The current pond site was eventually selected as the preferred alternative and the pipeline was routed on the south side of the highway due to the high-pressure gas line and other utilities on the north side. The north side also required obtaining easements while the route on the south side could be constructed completely within the Caltrans right-of-way; and the north side showed more likelihood of tortoise activity.

The attached Addendum compares the impacts of the selected sites and final design with the impacts identified in the Final

EIR. The Addendum concludes that *"the construction of the proposed design feature modification would not result in new geology and soil impacts that were not previously identified in the EIR, nor would it substantially increase the severity of an impact identified in the EIR. The relocation of the pipeline alignment to the southern right-of-way of Highway 62 would not result in new biological, cultural, or traffic impacts that were not previously identified in the EIR, nor would it substantially increase the severity of any impact identified in the EIR. Additionally, no mitigation is required beyond the existing commitments contained within the Mitigation Monitoring and Reporting Program. Rather, Mitigation Measure 3.5-2a is no longer applicable (requiring the water in the recharge ponds not to exceed original grade elevations.) There would be no change to the EIR's significance conclusion associated with soil erosion and stability impacts, biological resources, cultural resources or traffic impacts."* With the adoption of the Addendum, the Final EIR will be updated to reflect changes that have occurred during final design of the project.

JOSHUA BASIN WATER DISTRICT RECHARGE BASIN AND PIPELINE PROJECT

Final Environmental Impact Report
Addendum No. 1

Prepared for
Joshua Basin Water District

December 2012



JOSHUA BASIN WATER DISTRICT RECHARGE BASIN AND PIPELINE PROJECT

Final Environmental Impact Report
Addendum No. 1

Prepared for
Joshua Basin Water District

December 2012



626 Wilshire Boulevard
Suite 1100
Los Angeles, CA 90017
213.599.4300
www.esassoc.com

Oakland

Orlando

Palm Springs

Petaluma

Portland

Sacramento

San Diego

San Francisco

Santa Cruz

Seattle

Tampa

Woodland Hills

207651.03

TABLE OF CONTENTS

JBWD Recharge Basin and Pipeline Project FEIR Addendum No. 1

	<u>Page</u>
1. Introduction	1
1.1 Purpose of the Addendum	1
1.2 Regulatory Background	7
1.3 Incorporation by Reference.....	8
2. Project Overview	8
3. Objectives of the Approved Project	9
4. Description of Proposed Modifications	9
5. Impact Analysis	10
5.1 Revised Recharge Basin Design.....	10
5.2 Revised Pipeline Alignment	11
5.3 Conclusion	12
6. Summary of Effects.....	13

Appendix A: Pipeline Right-of-Way Measurements for California Department of Fish and Game

Figures

Figure 1	Recharge Basin Plan.....	2
Figure 2	Recharge Basin Cross Section.....	3
Figure 3	Pipeline Location	6

JOSHUA BASIN WATER DISTRICT RECHARGE BASIN AND PIPELINE PROJECT

FEIR Addendum No. 1

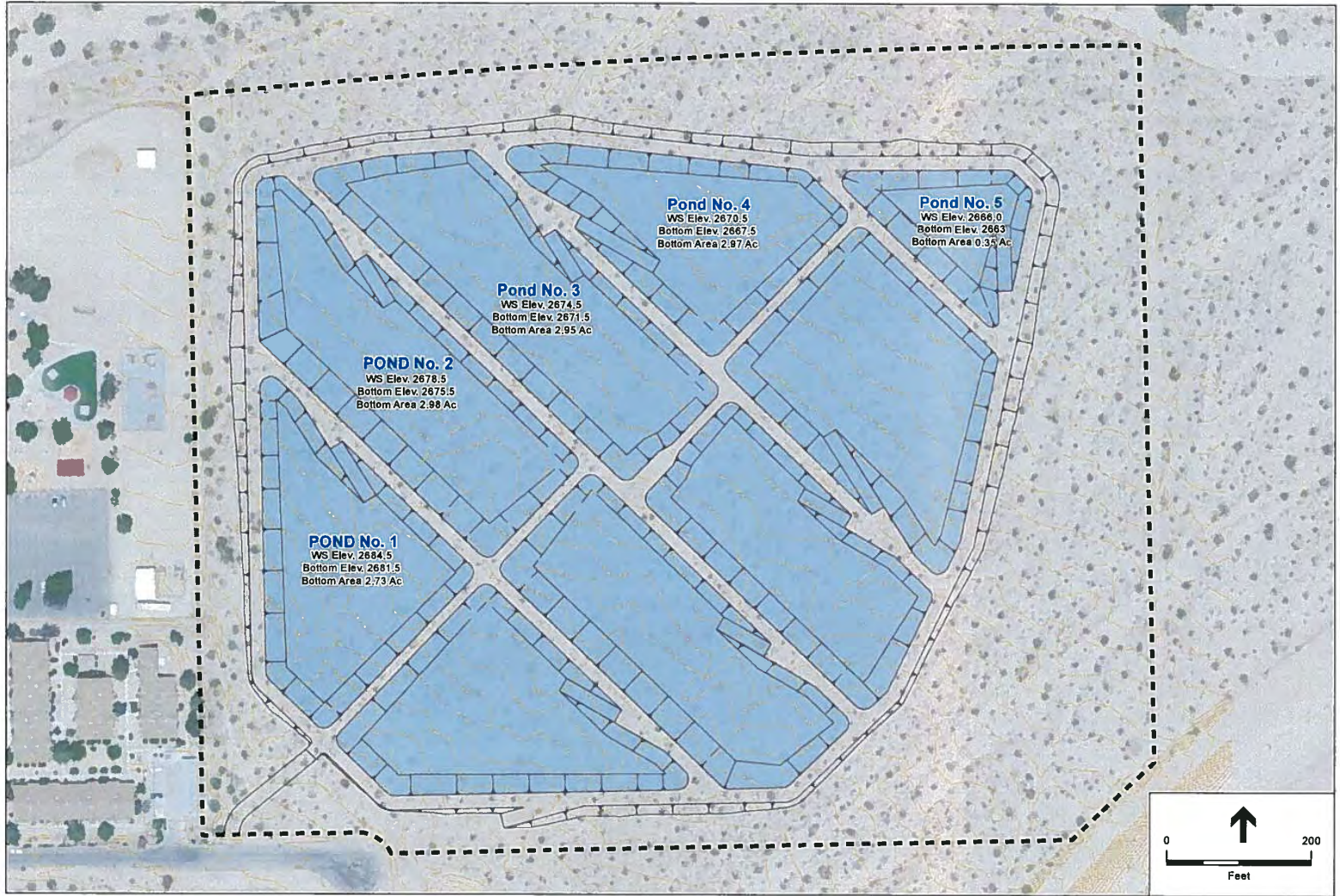
1. Introduction

1.1 Purpose of the Addendum

The purpose of this Addendum is to evaluate the potential environmental effects associated with a proposed modification to Joshua Basin Water District's (JBWD) Recharge Basin and Pipeline Project (project). The Final Environmental Impact Report (EIR) for the project was certified and approved by JBWD on September 23, 2009. Since certification of the EIR, two minor modifications to the project have been identified. This Addendum describes these minor modifications to the project and assesses potential impacts associated with the modifications.

Revised Recharge Basin Design

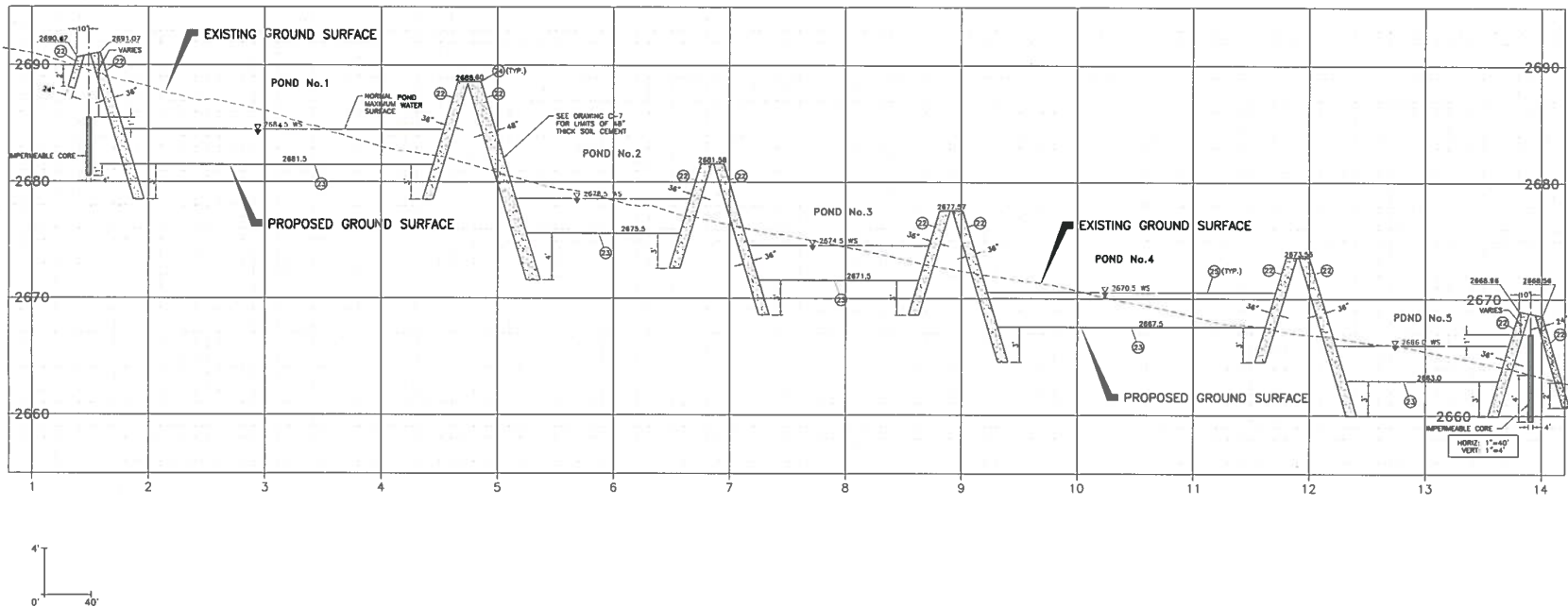
The first modification involves raising the height of the proposed recharge basin berms. The initial design of the recharge basins would have required the export of approximately 175,000 cubic yards (cy) of soil off site. However, during final design it was determined that the earthwork would be balanced on-site eliminating any off-site hauling trips for exported soil. The excavated soil would be used to construct higher bank walls for the retention ponds. The modification would increase the bank walls from three feet to four feet above grade elevation. **Figure 1** depicts the recharge basin modifications and **Figure 2** depicts a cross-section of the new recharge basin design. The construction of the higher bank walls would retain the same capacity of water as analyzed in the EIR. However, the maximum surface level of the impounded water would be above grade elevation by three feet.



SOURCE: Bing Maps, 2011. Joshua Basin Water District ESA, 2012.

Joshua Basin Water District Water Recharge Project . 207651

Figure 1
Recharge Basin Plan



SOURCE: Krieger & Stewart, 2012.

Joshua Basin Water District Water Recharge Project - 207651

Figure 2
Recharge Basin Cross-Section

This page left intentionally blank

The EIR concluded that the impounded water within the ponds would not exceed the ground elevation. As identified in Mitigation Measure 3.5-2a "final design of the recharge basins shall insure that water elevation including freeboard requirements does not exceed original grade elevations." However, the proposed modification would result in the impounded water being several feet above grade. As a result, new design features are introduced in this Addendum that would strengthen the exterior berms of the ponds to reduce soil erosion and prevent bank failure. These design features are as follows:

- The exterior berm width at the pond overflow level would be 35 feet and the berm would be compacted to 90 percent relative compaction.
- The exterior berm would incorporate an impermeable core (barrier) constructed of imported clay material that is four feet wide that extends four feet below existing grade and one foot above normal maximum water surface.
- The interior berm slope is lined with three feet thick 6% soil/cement mixture extending three feet below the toe of slope.
- The exterior berm slope is lined with two feet thick 6% soil/cement mixture extending two feet below the toe of slope. (Refer to Figure 1).

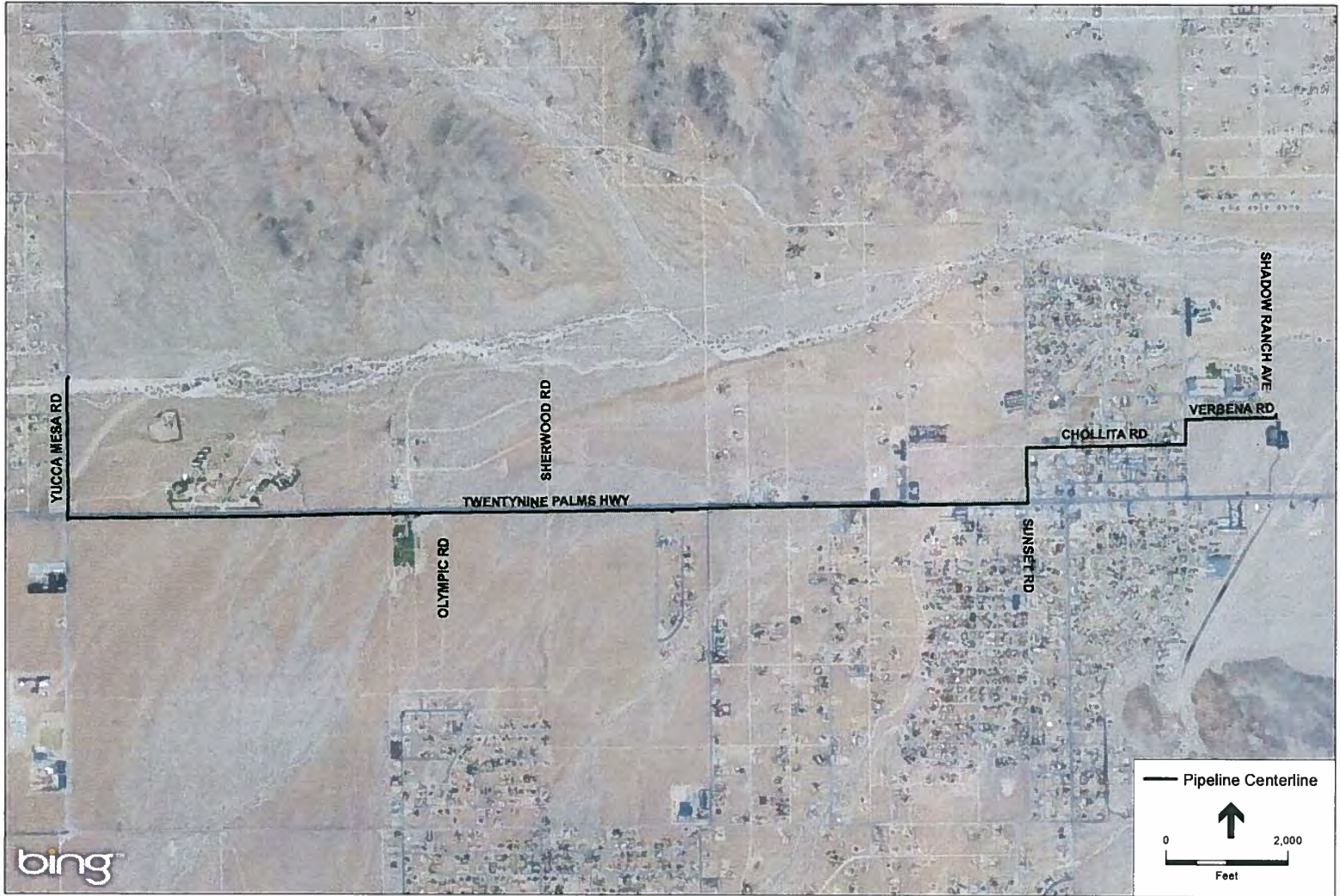
With the implementation of these design features, Mitigation Measure 3.5-2a of the EIR would not be required. The purpose of this mitigation measure was to ensure the project would not result in off-site flooding.

This Addendum analyzes the environmental effects associated with the balancing of earthwork on-site, recharge basin reconfiguration including higher bank walls and the implementation new design features to prevent off-site flooding.

Revised Pipeline Route

The second modification is the location of the pipeline route along State Route 62 (SR 62). The EIR identified the location of the pipeline as being buried approximately three to four feet below grade along the northern side of SR 62. JBWD is now proposing to locate the pipeline along the southern boundary of SR 62. **Figure 3** depicts the new proposed pipeline alignment.

The Final EIR identified the pipeline location on the northern side of the highway. However, the Draft EIR supporting technical studies included both review of impacts on both the northern and southern boundary of SR 62. This Addendum assesses potential impacts of locating the pipeline on the southern side of SR 62 and compares these potential effects to the analysis in the Final EIR.



SOURCE: Bing Maps; ESA, 2012.

Joshua Basin Water District Water Recharge Project . 207651

Figure 3
Proposed New Pipeline Alignment

1.2 Regulatory Background

According to Section 15164(a) of the *CEQA Guidelines*, the lead agency or responsible agency shall prepare an addendum to a previously certified EIR if some changes or additions are necessary but none of the conditions described in Section 15162 calling for preparation of a subsequent EIR have occurred. Section 15162 of the *CEQA Guidelines* lists the conditions that would require the preparation of a subsequent EIR rather than an addendum. These include the following:

- (1) Substantial changes are proposed in the project which will require major revisions of the previous EIR or negative declaration due to the involvement of new significant environmental effects or a substantial increase in the severity of previously identified significant effects;
- (2) Substantial changes occur with respect to the circumstances under which the project is undertaken which will require major revisions of the previous EIR or negative declaration due to the involvement of new significant environmental effects or a substantial increase in the severity of previously identified significant effects; or
- (3) New information of substantial importance, which was not known and could not have been known with the exercise of reasonable diligence at the time of the previous EIR was certified as complete or the negative declaration was adopted, shows any of the following:
 - a. The project will have one or more significant effects not discussed in the previous EIR or negative declaration;
 - b. Significant effects previously examined will be substantially more severe than shown in the previous EIR;
 - c. Mitigation measures or alternatives previously found not to be feasible would in fact be feasible, and would substantially reduce one or more significant effects of the project, but the project proponents decline to adopt the mitigation measure or alternative; or
 - d. Mitigation measures or alternatives which are considerably different from those analyzed in the previous EIR would substantially reduce one or more significant effects on the environment, but the project proponents decline to adopt the mitigation measure or alternative.

JBWD has evaluated the environmental impacts of the project modifications to the Recharge Basin and Pipeline Project Final EIR. As noted above, JBWD is acting as the lead agency and has determined that none of the above conditions apply and an Addendum to the certified EIR is the appropriate environmental documentation for the proposed modification.

1.3 Incorporation by Reference

Consistent with Section 15150 of the *CEQA Guidelines*, the following documents were used in the preparation of this Addendum and are incorporated herein by reference:

Joshua Basin Water District, *Recharge Basin and Pipeline Project Environmental Impact Report* (State Clearinghouse No. 2008111082), prepared by Environmental Science Associates (ESA), May 2009.

2. Project Overview

In 2004, the Mojave Water Agency (MWA) prepared a Regional Water Management Plan (RWMP) and Program Environmental Impact Report (PEIR) that evaluated water supply and demand throughout the MWA service area which included the JBWD service area. As part of the evaluation, projects and management actions were proposed to meet future water supply needs. The JBWD Recharge Basin and Pipeline Project was included within the MWA RWMP as a moderate priority water supply enhancement project for JBWD. The RWMP evaluated alternatives and concluded that the Recharge Basin and Pipeline Project would constitute the most appropriate means of providing water supply and storage to meet future JBWD service area demands.

Prior to the preparation of the RWMP, JBWD participated in the construction of the Morongo Basin Pipeline to convey State Water Project (SWP) water from the California Aqueduct in the Mojave River watershed to the Hi-Desert Water District and JBWD service areas. The Morongo Basin Pipeline is currently entitled to supply up to 7,250 acre feet per year (afy) of SWP water to the Hi-Desert Water District. JBWD is entitled to receive up to 1,959 afy until 2022 or until the 1,959 afy is modified by the percentage of State Project Water allocated to Mojave Water Agency. In order for JBWD to benefit from the Morongo Pipeline, JBWD is constructing a water recharge basin to connect the existing Morongo Basin Pipeline to the new basin. There were three alternative recharge basin sites identified along State Route (SR) 62 analyzed in the Final EIR. The Final EIR identified Alternative 3 as the superior Alternative.

The Final Recharge Basin and Pipeline Project consists of the following components:

- **Recharge Basins** - The project has a total area of 29 acres for basin construction, including 22 wet acres. The project includes the construction of multiple (up to six) six-to seven foot deep subbasins. The subbasins are separated by overflow earthen weirs, allowing water to flow from subbasin to subbasin as needed. The basins would fill by gravity and no pumping equipment would be needed. Control valving would be used to add water to the various subbasins, if necessary. These valves would be contained within a small building on the site. Water levels within the basins would not exceed original grade elevation and would be maintained at depths of three to five feet.
- **Pipeline** - The pipeline includes up to 24,000 linear feet of 16 to 24-inch diameter pipe connecting to the existing Morongo Pipeline at Yucca Mesa Road. The pipeline would be

located within the road ROW, following Yucca Mesa Road south to SR 62 then eastward within the southern road-right-of way along SR 62 to the recharge basin locations.

JBWD prepared and circulated the Draft EIR for public review from May 12, 2009 through June 25, 2009. The JBWD Board of Directors certified the Final EIR and approved the project in September of 2009.

This Addendum analyzes the environmental effects associated with the balancing of earthwork on-site, pond reconfiguration including higher bank walls and the implementation of new design features to prevent recharge water leaking through the exterior berms of the recharge basins. In addition, this Addendum identifies the potential effects of locating the pipeline in the southern portion of the SR 62 ROW.

3. Objectives of the Approved Project

The proposed modification maintains the same objectives of the approved project, which are provided below:

- Provide additional groundwater recharge, storage, and recovery capacity in the Joshua Basin region;
- Allow the storage of water during wet hydrologic periods for recovery and use during dry periods, to provide JBWD customers with increased water supply reliability;
- Reduce the demand for local groundwater; and
- Enhance water supply reliability.

4. Description of Proposed Modifications

This Addendum evaluates the modification to basin design. During final design of the project it was determined the balance of earthwork can be kept on-site to construct higher bank walls on the recharge basins. The modification would increase the bank walls from three feet to four feet above grade elevation (see Figure 1). The construction of the higher bank walls would retain the same capacity of water as analyzed in the Final EIR. However, the surface level of the impounded water would be above grade elevation by three feet.

The proposed modification would eliminate the need to export approximately 175,000 cy as identified in the Final EIR. The modification would retain the excavated soils from the pond construction on-site for the construction of the new bank walls. By eliminating the export of 175,000 cy of soil, impacts associated with truck trips (air, traffic and noise) would be reduced. This amounts to 8,750 truck trips. These truck trips would be eliminated. Approximately 850 to 1,000 truck trips would be required to export excess material from the site. The proposed modification would result in a net reduction of 7,750 truck trips for the project.

Additionally, during the design phase of the project it was determined the project pipeline alignment location would be better accommodated in the SR 62 southern ROW. Figure 3 identifies the revised location generally south of the pavement within the road shoulder. The mitigation provided for impacts to resources within the SR 62 ROW remain valid and the proposed modification would not change the conclusions of the certified EIR.

5. Impact Analysis

5.1 Revised Recharge Basin Design

As described in the EIR, natural soils would be excavated and recontoured to form earthen berms up to six feet above ground level around the recharge basin(s). The berms would be constructed from soil excavated during the excavation of the recharge basins. However, soils at the project site are sandy with little cohesiveness and are highly susceptible to erosion due to limited vegetation, low moisture content, common high winds, and infrequent high intensity rainfall events. These soils, if unreinforced, would not be suitable to retain water.

JBWD has modified the design of the berms to reduce the potential for erosion and bank failure. The following design features would stabilize the recharge basin banks and would reduce potential erosion, bank failure, leaking or flooding:

1. The exterior berm width at the pond overflow level would be 35 feet and the berm would be compacted to 90 percent relative compaction.
2. The exterior berm would incorporate an impermeable core (barrier) constructed of imported clay material that is four feet wide that extends four feet below existing grade and one foot above normal maximum water surface.
3. The interior berm slope is lined with three feet thick six percent soil/cement mixture extending three feet below the toe of slope.
4. The exterior berm slope is lined with two feet thick six percent soil/cement mixture extending two feet below the toe of slope.

Implementation of these design features would eliminate the need for Mitigation Measure 3.5-2a which required, "final design of the recharge basins shall insure that water elevation including freeboard requirements does not exceed original grade elevations." With the implementation of the new design features, Mitigation Measure 3.5-2a would be unnecessary.

The California Division of Safety of Dams (DSOD) oversees the construction of a "dam" if it is more than six feet in height and impounds 50 acre-feet or more of water. Because the project earthen berms are designed to be constructed less than six feet, the project does not fall under the purview of the DSOD. However, the final design of the project would be prepared by a licensed civil engineer and implementation would be monitored by a licensed civil engineer.

With the implementation of the new design features associated with the proposed modification, the earthen berms would be sufficiently strengthened to retain water and avoid off-site flooding or leaking resulting in a less than significant impact without Mitigation Measure 3.5.2a. The project would not result in any new significant impacts beyond what was previously analyzed within the EIR.

Furthermore, implementation of the new design features would substantially reduce truck trips. The EIR assumed soil haul trips would be necessary to remove approximately 175,000 cy of excavated soil from the site entailing 200 round trips per day with an assumed travel distance of 20 miles. As a result of balancing the excavated soil on-site the impacts associated with air, noise and traffic from off-site haul trucks would be eliminated. All other environmental resource areas evaluated in the EIR would not change as a result of the project modifications because construction activities would be contained entirely within the footprint previously evaluated in the EIR.

5.2 Revised Pipeline Alignment

As described above, the new pipeline alignment is proposed along the southern border of the SR 62 right of way (ROW) instead of along the northern side. Potential impacts associated with project implementation to biological resources, cultural resources and traffic are described below.

Biological Resources

The EIR prepared in 2009, concluded that impacts to sensitive biological resources from installation of the pipeline along the northern border of SR 62 would be less than significant due to the proximity of the construction zone to the highway. The EIR included desert tortoise surveys with evenly spaced transects on both the north and south side of the SR 62. The transect surveys found direct evidence of desert tortoise presence only on the northern border of SR 62 and no evidence of desert tortoise presence along the southern border. Therefore, moving the pipeline alignment from the north to the south actually reduces the potential impact to desert tortoises.

Much of the pipeline would be installed within the SR 62 ROW. Much of this area is paved or gravelly and supports no suitable habitat. However, some relatively undisturbed land south of SR 62 would be within the construction zone. In October 2012, a site reconnaissance was performed by two qualified biologists (Circle Mountain Biological Consultants) to determine potential habitat loss for the desert tortoise, and to determine if any impacts discussed in the EIR increased with the new southern alignment. A letter report summarizing the findings of the survey is attached as **Appendix A** to this Addendum. The report found total acreage impact to the fringe desert habitat of 5.7-acres. Due to the low quality of habitat at the highway fringes, moving the alignment to the southern side of the highway would not significantly impact desert tortoises. Impacts to desert tortoises would be similar to the project evaluated in the EIR using the northern side and would not increase the potential of encountering a desert tortoise. In fact, the

surveys indicate that the likelihood of encountering desert tortoises is less on the south side of SR62. No additional mitigation would be necessary.

Cultural Resources

A Phase I Cultural Resources Assessment was conducted in October of 2008. The assessment included an analysis for the proposed pipeline alignment, which was surveyed in 15-meter transects (or 50 feet) on either side of the alignment. After Basin Alternative 3 was selected as the preferred recharge basin location and an alternative pipeline route was added for consideration, a second Phase I Cultural Resources Assessment was conducted in December of 2009. Both studies were prepared to support the northern SR 62 alignment. However, the cultural records search performed covered a half mile radius surrounding the area of potential effects (APE) and a 50 foot corridor on either side of SR 62 was surveyed. Therefore, the findings in both reports discuss impacts associated with installation of the southern pipeline alignment as well.

The EIR identified the existence of a cultural resource site on the southern side of SR 62. With the current proposed alignment of the pipeline in the southern SR 62 ROW the sensitive site is currently being tested for cultural significance. Upon receipt of the test results, JBWD will procure the site in accordance with the requirements of Mitigation Measures 3.4-1 through 3.4-3. Implementation of Mitigation Measures 3.4-1 through 3.4-3 would ensure that impacts to cultural resources would remain less than significant. The proposed modification would not result in a new significant impact or increase the severity of a previously identified significant impact.

Traffic and Circulation

The EIR analyzed traffic impacts associated with implementation of the pipeline alignment along the northern side of SR 62. The EIR determined that construction of the pipeline would result in temporary disruption of traffic due to truck movements to and from the project area during activities associated with project construction. Construction related traffic would cause a temporary and intermittent lessening of the capacities of access streets and haul routes because of the slower movements and turning radii of construction trucks compared to personal vehicles. Installation of the pipeline within the existing roadway ROW is not anticipated to cause road closures, although traffic control would be necessary. Placing the pipeline within the southern side of the highway would result in similar traffic effects but to the east-going traffic. Construction would require an encroachment permit from Caltrans. This would not result in a new impact or increase the severity of a previously identified impact.

5.3 Conclusion

The construction of the proposed design feature modification would not result in new geology and soil impacts that were not previously identified in the EIR, nor would it substantially increase the severity of an impact identified in the EIR. The relocation of the pipeline alignment to the southern ROW of SR 62 would not result in new biological, cultural, or traffic impacts that were not previously identified in the EIR, nor would it substantially increase the severity of any impact

identified in the EIR. Additionally, no mitigation is required beyond the existing commitments contained within the Mitigation Monitoring and Reporting Program (MMRP). Rather, Mitigation Measure 3.5-2a is no longer applicable. There would be no change to the EIR's significance conclusion associated with soil erosion and stability impacts, biological resources, cultural resources or traffic impacts.

6. Summary of Effects

As discussed in this Addendum, the proposed modifications would not change the conclusions of the certified EIR. The construction and operation of the recharge basin would meet the same project objectives envisioned in the EIR. The location of the pipeline in the southern ROW of SR 62 would not require additional mitigation and would meet the same project objectives envisioned in the EIR. As analyzed above, no new potentially significant impacts would occur, and the project would not increase the severity of previously identified significant impacts. The proposed modifications to the previously-approved project do not meet any of the conditions that would require the preparation of a subsequent EIR or negative declaration set forth in Section 15162 of the *State Guidelines* or any of the conditions set forth in Section 15163 of the *State Guidelines*.

Appendix A
Pipeline Right-of-Way
Measurements for California
Department of Fish and Game





CIRCLE MOUNTAIN BIOLOGICAL CONSULTANTS, INC.

P.O. BOX 3197

WRIGHTWOOD, CA 92397

PHONE/FAX: (760) 249-4948

Email: circlemtn@yahoo.com

24 October 2012

Mr. Joe Guzzetta, General Manager
Joshua Basin Water District
61750 Chollita Road, P.O. Box 675
Joshua Tree, California 92522

RE: Joshua Basin Water District pipeline right-of-way measurements for California Department of Fish and Game

Dear Mr. Guzzetta:

This brief letter report is intended to provide additional information to California Department of Fish and Game (CDFG) for the proposed pipeline associated with a recharge basin to be developed by Joshua Basin Water District (JBWD) in Joshua Tree, San Bernardino County, California. The draft incidental take permit completed by CDFG in April 2012 does not currently have a number that may be referenced. In a meeting with Kim Nicol and Debra Hawk (by phone) on 16 October 2012, we were asked to estimate how many acres would be impacted by installation of the proposed pipeline along the southern shoulder of Highway 62.

To determine this acreage, Ed LaRue and Mike Radakovich, using maps provided by ESA, surveyed the pipeline right-of-way (ROW) on 24 October 2012. A meter tape and hand-held global position system unit were used to measure the lateral distance between the edge of the road and the southern boundary of the ROW. The "edge of the road" either corresponded to an asphalt curb or the interface between the asphalt and sand where there were no curbs. Measurements were taken at approximately 60-meter (200 feet) intervals to the nearest decimeter, as shown in the table on the next page. As such, a total of 64 measurements was taken along the 2.38-mile± ROW. There are portions of the pipe on Yucca Mesa that are fully within the asphalt road; areas between the Joshua Tree playhouse where the lateral distance was measured at Station 64 and Sunset Road to the east are in the commercial district; areas along Chollita Road are residential; and no tortoise sign was found in areas along Sunset Road, Sunburst Road, and Verbena Street, so no measurements were taken in these areas. The measurements that were taken, then, represent the vegetated portions of the ROW between the asphalt, which is not habitat, and the southern edge of the ROW, along those portions of the pipeline where tortoise sign was found in adjacent areas (Figure 3b from the BA is attached).

JBWD Pipeline ROW Measurements					
Station	Meters	Feet	Station	Meters	Feet
1	3.3	10.8	33	5.5	18.0
2	4.8	15.7	34	4.4	14.4
3	5.6	18.4	35	4.9	16.1
4	7.4	24.3	36	4.3	14.1
5	6.4	21.0	37	5.2	17.1
6	6.1	20.0	38	7.3	23.9
7	6.4	21.0	39	6.8	22.3
8	7.0	23.0	40	4.4	14.4
9	6.4	21.0	41	4.8	15.7
10	6.6	21.6	42	4.8	15.7
11	6.3	20.7	43	3.3	10.8
12	6.1	20.0	44	3.1	10.2
13	6.7	22.0	45	4.8	15.7
14	6.8	22.3	46	5.2	17.1
15	6.4	21.0	47	4.9	16.1
16	6.6	21.6	48	6.2	20.3
17	5.9	19.3	49	4.9	16.1
18	4.6	15.1	50	12.2	40.0
19	4.6	15.1	51	12.4	40.7
20	5.1	16.7	52	13.6	44.6
21	6.4	21.0	53	13.0	42.6
22	6.6	21.6	54	7.4	24.3
23	5.9	19.3	55	5.4	17.7
24	6.0	19.7	56	0	0
25	6.2	20.3	57	0	0
26	5.7	18.7	58	2.0	6.6
27	6.2	20.3	59	3.2	10.5
28	0	0	60	4.1	13.4
29	0	0	61	2.8	9.2
30	10.2	33.5	62	2.9	9.5
31	10.3	33.8	63	3.8	12.5
32	3.9	12.8	64	3.8	12.5
Total		611.6 feet			653.9 feet
Average		19.1 feet			20.4 feet
Cumulative Width Measurements = 1,265 feet/64 = Overall Average = 19.8 feet wide Ranging from 0 to 33.8 feet wide					

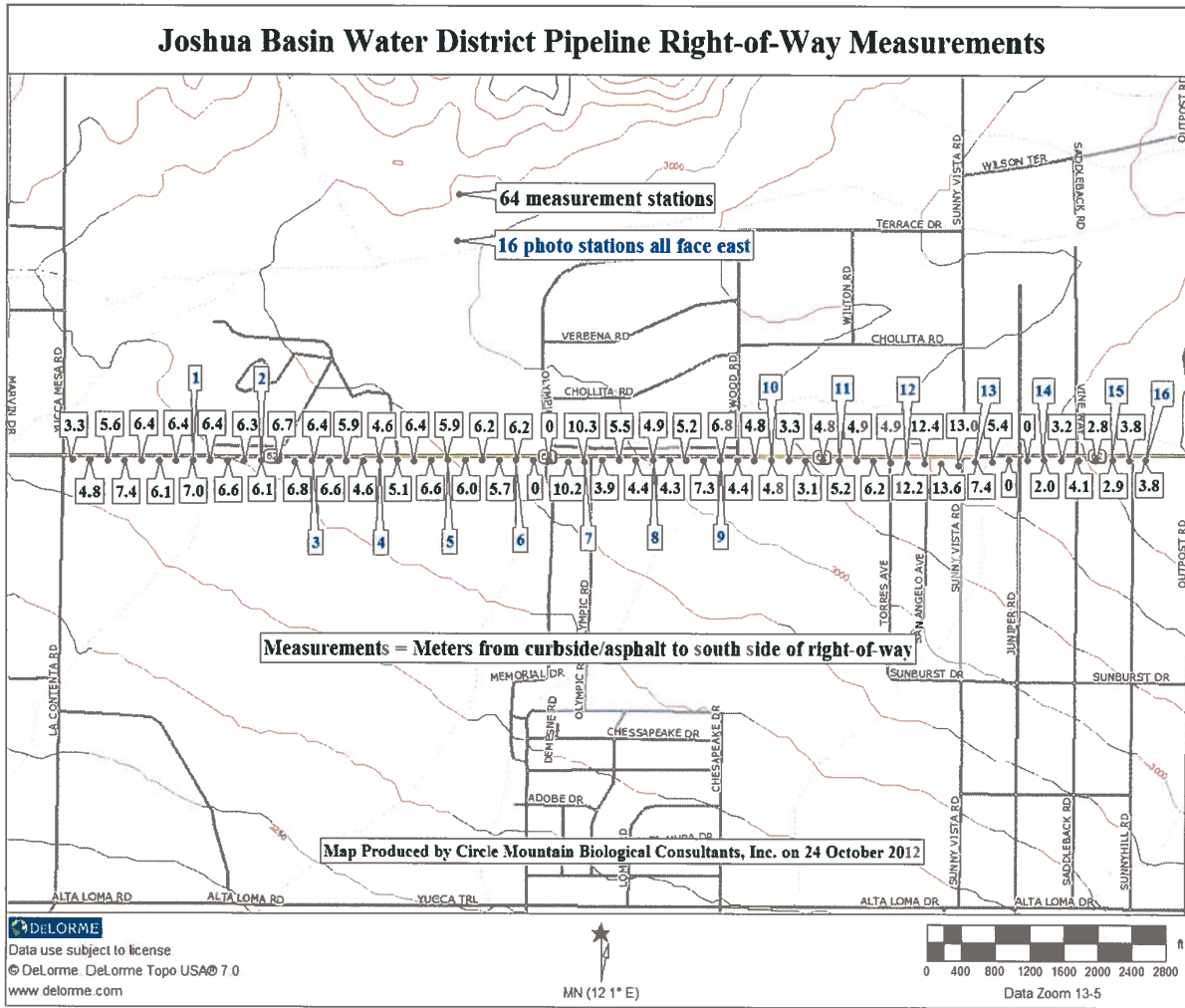
Using Topo USA 7.0, the total length of the right-of-way from La Contenta at the west end to the playhouse at the east end of tortoise habitat was calculated as being 2.38 miles, which when multiplied by 5,280 is 12,566 feet long. Given an average width of 19.8 feet multiplied by the 12,566 length, the area of the impact is estimated at 248,815 square feet. Finally, 248,815 square feet divided by 43,560 square feet per acre gives a **total acreage of impact at 5.7 acres**. This then is the estimated area of impact requested by CDFG for inclusion in the incidental take permit. It may be prudent to estimate the impact at “about 6.0 acres, not likely to exceed approximately 10 acres” to be sure the take permit is accurate and inclusive of the impact area. Importantly, one of the duties of the biological monitor will be to measure the actual area of impact, so that actual acreage of the impact will be reported to CDFG once the pipeline has been installed.

One final resource provided herein for CDFG is a visual representation of the pipeline right-of-way. Sixteen (16) digital photographs were taken at approximately 800-foot intervals, which are mapped in the attached figure. Photographs coincided with measurement stations and all are oriented from west-to-east. Again, these are provided to CDFG so that they may better assess the relative value of the ROW as tortoise habitat, which is judged to be marginal, at best. Importantly, LaRue and Radakovich have approximately 30 years of combined experience seeking tortoise sign, and both actively surveyed the areas within the ROW between the measurement stations as the lateral distances were recorded. No tortoise sign was found during this exercise.

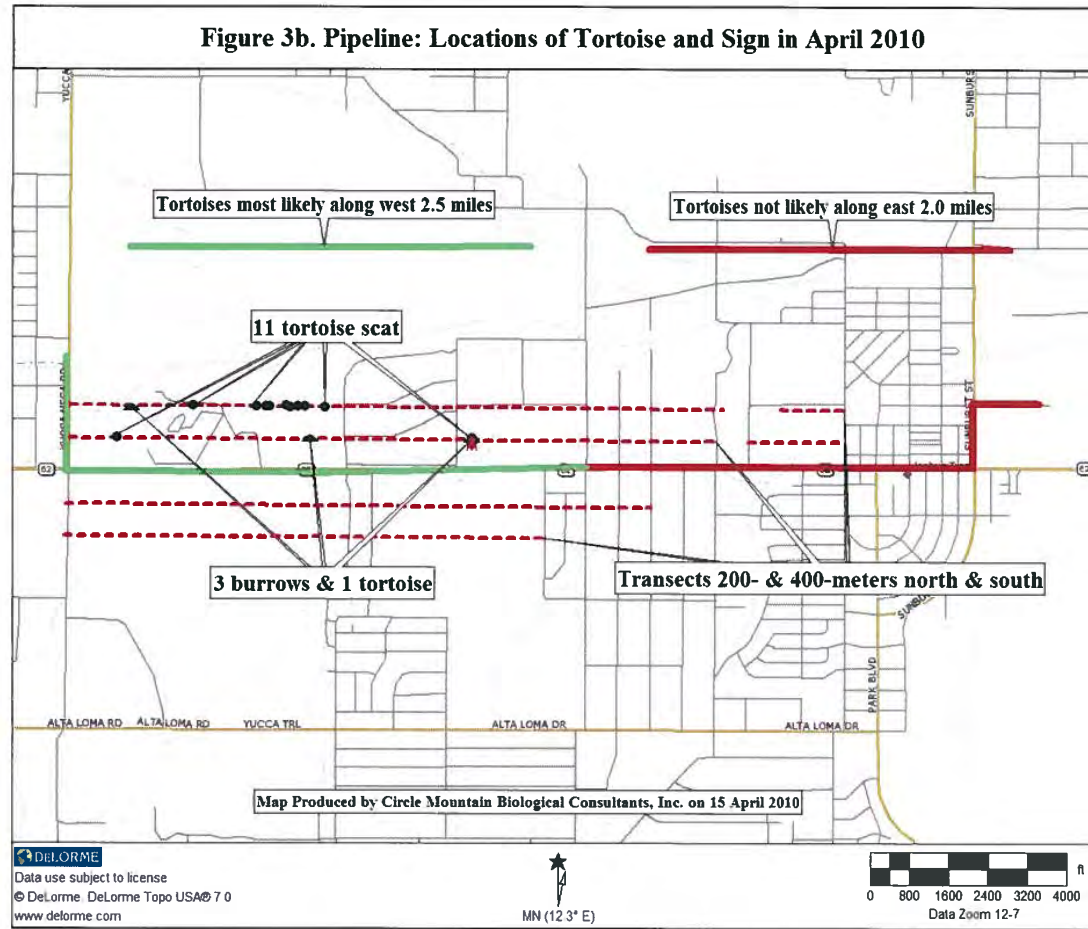
The reference map showing the 64 stations, corresponding measurements, and the 16 photographic stations are attached. Figure 3b from the Biological Assessment is also attached to show those portions of the ROW where tortoise sign was found in 2010 (the pale green line represents those portions of the ROW measured earlier today). Please let us know if you need more information.

Regards,

Circle Mountain Biological Consultants, Inc.
Edward L. LaRue, Jr.
Consulting Biologist



The measurements were taken along the pale green line, which corresponds with the location of tortoise sign in areas adjacent to the pipeline. This figure is taken from the Biological Assessment.



Photographic Exhibits



Exhibit 1. Station 1 facing east.



Exhibit 2. Station 2 facing east.



Exhibit 3. Station 3 facing east.



Exhibit 4. Station 4 facing east.



Exhibit 5. Station 5 facing east.



Exhibit 6. Station 6 facing east.



Exhibit 7. Station 7 facing east.



Exhibit 8. Station 8 facing east.



Exhibit 9. Station 9 facing east.



Exhibit 10. Station 10 facing east.



Exhibit 11. Station 11 facing east.



Exhibit 12. Station 12 facing east.



Exhibit 13. Station 13 facing east.



Exhibit 14. Station 14 facing east.



Exhibit 15. Station 15 facing east.



Exhibit 16. Station 16 facing east.

JOSHUA BASIN WATER DISTRICT
SUPPLEMENTAL DATA SHEET

Meeting of the Board of Directors

February 6, 2013

Report to: Members of the Board

From: Board ad hoc JBWD Management Compensation Scales Project Committee (President Luckman and Vice President Coate)

TOPIC: ADJUSTMENT IN SALARY RANGES FOR MANAGEMENT, SUPERVISORY, AND CONFIDENTIAL UNREPRESENTED EMPLOYEES

RECOMMENDATION: That the Board take the following action:

- 1) Authorize an increase in the salary ranges for management, supervisory, and confidential unrepresented employees of 5.3% effective with the pay period beginning Saturday, February 9, 2013.
- 2) Authorize an increase in the monthly cafeteria plan from \$840 per month to \$900 per month.
- 3) Establish a policy of considering adjustments to management compensation annually when Social Security Index changes are determined by the federal government.

ANALYSIS: Management salary ranges and benefits have not been adjusted since mid-2008, nearly five years ago. The cost of living and Social Security payments have increased by 5.3% since that time.

Management employees are not "organized" as a bargaining unit under the California Meyers-Milias Brown Act: that is, they are not unionized and do not have a collective bargaining contract. Unlike with represented employees, there is no legal obligation to "meet and confer" or negotiate adjustments in management compensation. Instead, the Board periodically considers management salaries and benefits. In the past, the Board has authorized regular (usually annual) "cost of living" increases which have applied to all employees. In addition, periodically the District has conducted formal surveys of individual positions (both management and non-management) in other water agencies and has made "equity adjustments" when appropriate, other than COLAs, through that process. Each agency has a different management structure and it is

difficult to compare each position with those in other agencies; so adjustments other than COLAs have typically been made using an outside consultant with expertise in this field.

The ad hoc committee reviewed compensation in other local water districts. While we were not able to compare each position for the reasons mentioned above, we were satisfied that the recommended changes are necessary for our management compensation structure to remain competitive.

The committee recommendation is a change from past practice in that the range for each position will be increased (both top and bottom), but each employee's salary will not automatically be increased. Each employee's salary will be considered for adjustment during the annual performance evaluation process. This will insure that the range of pay will remain competitive, but individual salary increases will be based on performance.

The committee took note that Represented Employees (non-management) have received increases of 8.3% since 2008 through their contracts and their cafeteria benefits have increased from \$800 to \$875 during that time. Their salaries remain generally competitive with neighboring water districts. These increases were not applied to management salaries.

Finally, the committee considered that management compensation has not been considered for five years and should be reviewed annually. To be sure that this takes place, the committee recommends that a Board ad hoc committee be appointed by the president to meet with staff in the fall of each year when the adjustment to the Social Security Index is determined by the federal government. At that time the Board will consider making adjustments to the tops of ranges at the same rate as the adjustment in Social Security Index and will consider any other compensation issues. It is intended only that the Board will commit to annually *consider* making adjustments. There is no commitment that the Board will actually adjust compensation annually at that time.

The committee believes that approval of the recommendations is important to maintain a competitive management compensation plan.

RESOLUTION -12-900

A RESOLUTION OF THE BOARD OF DIRECTORS
OF THE JOSHUA BASIN WATER DISTRICT
APPROVING THE COMPENSATION PLAN FOR THE
MANAGEMENT/SUPERVISORY AND CONFIDENTIAL EMPLOYEES

WHEREAS, pursuant to Article VII, Section A of the Personnel Policy - Resolution 333-90 of the Joshua Basin Water District (hereafter "District"), the Board of Directors of the Joshua Basin Water District hereby adopts the revised compensation plan for the Management, Supervisory and Confidential Employees Bargaining Unit (hereafter "MSC").

NOW, THEREFORE IT IS RESOLVED by the Board of Directors of the Joshua Basin Water District as follows:

1. Salary ranges of all MSC positions will be increased by the Social Security index in the amount of 5.3% effective the pay period beginning Saturday, February 9, 2013. This action will increase the bottom and top of each range, giving each individual in that position the opportunity for merit increase based on the performance and merit plan. This increase is not considered to be a Cost of Living Increase and will not automatically be applied to each individual in each MSC position except through the performance review process.
2. By October 1 of 2013 and each subsequent year, the Board President will assign a Board committee to meet with the General Manager and the MSC members to consider the change in the Social Security Index and other management compensation matters. A report will be placed on the agenda of the District Board of Directors for the first meeting in November each year, including a report from the Board committee advising the Board of the amount of the annual Social Security Index adjustment, (the annual increase granted to recipients of the federal Social Security program) and recommending any proposed changes in management compensation. It is understood that the Board may or may not, at its sole discretion, increase salary ranges by such amount each year; and that individuals in each MSC position will still be subject to merit system and performance evaluations in order to receive any increase as a result of the Board's action.
3. Cafeteria Plan contributions shall be adjusted to the following amount:
\$900 per month effective the pay period beginning February 9, 2013.

Other conditions related to administration of the Cafeteria Plan as outlined in Resolution 05-777 remain unchanged.

All other terms and conditions of employment for employees in the MSC unit, for the administration of procedures and policies which relate to personnel issues, will remain as provided in the Personnel Policy—Resolution 333-90 and subsequent modifying resolutions. This said Resolution 12-900 is intended to next be reviewed in November 2013, but may be considered by the board at any time.

ADOPTED this 6th day of February, 2013

By: _____
Mickey Luckman, President

Attest: _____
Joe Guzzetta, Secretary

JOSHUA BASIN WATER DISTRICT
SUPPLEMENTAL DATA SHEET

Meeting of the Board of Directors

February 6, 2013

Report to: President and Members of the Board
From: Joe Guzzetta, General Manager

TOPIC: INCREASE IN RATES FOR ENGINEERING CONSULTING SERVICES

RECOMMENDATION: That the Board authorize an increase in the rates for engineering services for Dudek Engineering, the District Engineer, as noted in the attached letter and schedule of charges.

ANALYSIS: Dudek Engineering has served as the District Engineer for the past six years and has not requested an increase during that time, although their corporate rates have increased to other clients.

Attached is the letter requesting the new rates with the proposed rate schedule. Positions typically used for District work show the current rates hand-written. The two positions that account for most of the District's work are the Principal Engineer II (Mike Metts) currently \$180 proposed to go to \$210 (rate to new clients is \$220); and Project Engineer II (Justin Scheidel) currently \$95 proposed to go to \$110 (rate for new clients is \$120).

Staff recommends the rate increases given that they have not been adjusted in such a long period of time, and that the District will still be given a discount from new clients. Dudek has performed a great deal of the current program of work at the reduced prior rates and has lowered the overall engineering costs by assigning many of the tasks to the Project Engineer II.

DUDEK

CORPORATE OFFICE
605 THIRD STREET
ENCINITAS, CALIFORNIA 92024
T 760.942.5147 T 800.450.1818 F 760.632.0164

January 24, 2013

Joe Guzzetta, General Manager
Joshua Tree Water District
61750 Chollita Road
Joshua Tree, California 92252

Subject: Request for Consideration, Standard Schedule of Charges

Dear Mr. Guzzetta:

Joshua Basin Water District (District) and Dudek have maintained a long and successful collaboration. We value our relationship with the District, and look forward to many more years of service to you and District customers. As a partner with the District, we have endeavored to assure that our efforts reflect the values and goals of District management and staff, as well as the Board of Directors.

As we close our 2012 fiscal year, it has been noted that the Standard Schedule of Charges for service to the District has not been revised since 2008. As one would expect, our standard rates have increased over the past five years. For example, the District Engineer rate currently billed is \$180 per hour. The current billable rate for that individual is \$220 per hour. Other rate categories exhibit similar change, while we have held rates constant.

I am writing you today to request your consideration in adjusting the contract rate schedule. I have attached our 2013 Standard Schedule of Charges for your review. Furthermore, reflecting our ongoing partnership with the District, I have discounted the rates for myself as District Engineer, and for Justin Scheidel as Project Engineer II. It is our intent to hold these discounted rates for a period of two years, at which time we would request additional rate discussion.

If you are in agreement with these proposed rate changes, please let me know and I will make the appropriate changes to future billings. As we are currently completing the initial billing cycle of the year, the proposed new rates would take effect starting with the January 2013 invoices.

Thank you for your consideration of this request. The District is one of our highest priority clients, and we are dedicated to providing economical and quality service to you and District constituents. If you have any questions or require any additional information, please do not hesitate to email me at mmetts@dudek.com, or call me at 619-417-6304.

Respectfully Submitted,

DUDEK



D. Michael Metts, PE
Principal, Engineering Services Manager

**JOSHUA BASIN WATER DISTRICT
2013 STANDARD SCHEDULE OF CHARGES**

ENGINEERING SERVICES

Project Director	\$240 \$210.00/hr
Principal Engineer III.....	\$220 \$210.00/hr
Principal Engineer II	\$210.00/hr
Principal Engineer I	\$198.00/hr
Program Manager	\$200.00/hr
Senior Project Manager.....	\$188.00/hr
Project Manager	\$178.00/hr
Senior Engineer III.....	\$170.00/hr
Senior Engineer II	\$165.00/hr
Senior Engineer I	\$155.00/hr
Project Engineer IV/Technician IV.....	\$145.00/hr
Project Engineer III/Technician III.....	\$130.00/hr
Project Engineer II/Technician II.....	\$120 \$110.00/hr
Project Engineer I/Technician I	\$105.00/hr
Project Coordinator	\$85.00/hr
Engineering Assistant.....	\$75.00/hr

ENVIRONMENTAL SERVICES

Principal	\$225.00/hr
Senior Project Manager/Specialist II	\$210.00/hr
Senior Project Manager/Specialist I	\$200.00/hr
Environmental Specialist/Planner VI	\$180.00/hr
Environmental Specialist/Planner V	\$160.00/hr
Environmental Specialist/Planner IV	\$150.00/hr
Environmental Specialist/Planner III.....	\$140.00/hr
Environmental Specialist/Planner II.....	\$130.00/hr
Environmental Specialist/Planner I.....	\$120.00/hr
Analyst	\$100.00/hr
Planning Research Assistant	\$80.00/hr

COASTAL PLANNING/POLICY SERVICES

Senior Project Manager/Coastal Planner I.....	\$200.00/hr
Environmental Specialist/Coastal Planner VI..	\$190.00/hr
Environmental Specialist/Coastal Planner V...	\$170.00/hr
Environmental Specialist/Coastal Planner IV..	\$160.00/hr
Environmental Specialist/Coastal Planner III ..	\$150.00/hr
Environmental Specialist/Coastal Planner II ..	\$140.00/hr
Environmental Specialist/Coastal Planner I ...	\$130.00/hr

ARCHAEOLOGICAL SERVICES

Senior Project Manager/Archaeologist II.....	\$210.00/hr
Senior Project Manager/Archaeologist I	\$200.00/hr
Environmental Specialist/Archaeologist VI..	\$180.00/hr
Environmental Specialist/Archaeologist V...\$	\$160.00/hr
Environmental Specialist/Archaeologist IV..\$	\$150.00/hr
Environmental Specialist/Archaeologist III ..\$	\$140.00/hr
Environmental Specialist/Archaeologist II ...\$	\$130.00/hr
Environmental Specialist/Archaeologist I ...\$	\$120.00/hr
Archaeologist Technician II	\$70.00/hr
Archaeologist Technician I	\$50.00/hr

CONSTRUCTION MANAGEMENT SERVICES

Principal/Manager	\$195.00/hr
Senior Construction Manager	\$180.00/hr
Senior Project Manager.....	\$160.00/hr
Construction Manager	\$150.00/hr
Project Manager.....	\$140.00/hr
Resident Engineer.....	\$140.00/hr
Construction Engineer.....	\$135.00/hr
On-site Owner's Representative	\$130.00/hr
Construction Inspector III	\$125.00/hr
Construction Inspector II	\$115.00/hr
Construction Inspector I	\$105.00/hr
Prevailing Wage Inspector	\$135.00/hr

HYDROGEOLOGICAL SERVICES

Principal	\$220.00/hr
Sr. Environmental Engineer	\$190.00/hr
Sr. Hydrogeologist/Sr. Proj Mgr.....	\$170.00/hr
Project Manager.....	\$155.00/hr
Associate Hydrogeologist/Engineer.....	\$140.00/hr
Hydrogeologist IV/Engineer IV	\$125.00/hr
Hydrogeologist III/Engineer III	\$115.00/hr
Hydrogeologist II/Engineer II	\$105.00/hr
Hydrogeologist I/Engineer I	\$95.00/hr
Technician.....	\$95.00/hr

DISTRICT MANAGEMENT & OPERATIONS

District General Manager	\$225.00/hr
District Engineer.....	\$210.00/hr
Operations Manager	\$150.00/hr
District Secretary/Accountant	\$85.00/hr
Collections System Manager.....	\$95.00/hr
Grade V Operator.....	\$100.00/hr
Grade IV Operator.....	\$85.00/hr
Grade III Operator	\$80.00/hr
Grade II Operator	\$63.00/hr
Grade I Operator	\$55.00/hr
Operator in Training	\$40.00/hr
Collection Maintenance Worker II.....	\$55.00/hr
Collection Maintenance Worker I	\$40.00/hr

OFFICE SERVICES

Technical/Drafting/CADD Services

3D Graphic Artist.....	\$150.00/hr
Senior Designer	\$135.00/hr
Designer.....	\$125.00/hr
Assistant Designer	\$120.00/hr
GIS Specialist IV	\$150.00/hr
GIS Specialist III.....	\$140.00/hr
GIS Specialist II.....	\$130.00/hr
GIS Specialist I.....	\$120.00/hr
CADD Operator III.....	\$115.00/hr
CADD Operator II.....	\$110.00/hr
CADD Operator I.....	\$95.00/hr
CADD Drafter	\$85.00/hr
CADD Technician.....	\$75.00/hr

SUPPORT SERVICES

Technical Editor III	\$140.00/hr
Technical Editor II.....	\$125.00/hr
Technical Editor I.....	\$110.00/hr
Publications Assistant III	\$100.00/hr
Publications Assistant II.....	\$90.00/hr
Publications Assistant I.....	\$80.00/hr
Clerical Administration II.....	\$80.00/hr
Clerical Administration I.....	\$75.00/hr

Forensic Engineering – Court appearances, depositions, and interrogatories as expert witness will be billed at 2.00 times normal rates.

Emergency and Holidays – Minimum charge of two hours will be billed at 1.75 times the normal rate.

Material and Outside Services – Subcontractors, rental of special equipment, special reproductions and blueprinting, outside data processing and computer services, etc., are charged at 1.15 times the direct cost.

Travel Expenses – Mileage at current IRS allowable rates. Per diem where overnight stay is involved is charged at cost

Invoices, Late Charges. - All fees will be billed to Client monthly and shall be due and payable upon receipt. Invoices are delinquent if not paid within thirty (30) days from the date of the invoice. Client agrees to pay a monthly late charge equal to one percent (1%) per month of the outstanding balance until paid in full.

Annual Increases – Unless identified otherwise, these standard rates will increase 3% annually.

**JOSHUA BASIN WATER DISTRICT
SUPPLEMENTAL DATA SHEET**

Meeting of the Board of Directors

February 6, 2013

Report to: Members of the Board
From: Mickey Luckman, President

TOPIC: REORGANIZATION OF ADVISORY COMMITTEES AND APPOINTMENT OF DIRECTORS AUTHORIZED TO ATTEND MEETINGS OF OUTSIDE AGENCIES AND ORGANIZATIONS

RECOMMENDATION: That the Board receive this report for information

ANALYSIS: In view of recent discussions with the board and legal counsel I am submitting a new schedule of designated Advisory Committees and related appointments and appointments of Directors authorized to attend meetings of outside agencies and organizations.

The attached list provides for two standing committees and six ad hoc committees to better reflect the current activities and needs of the Board. It also restates the appointments to outside agencies and boards.

It should be noted that staff has already posted Fair Political Practices Commission (FPPC) form 18705.5 on the District website which notes these committee and agency assignments and the potential estimated compensation that board members could receive by attending these meetings. You will recall that Gil Granito discussed this form at our last board meeting.

**JOSHUA BASIN WATER DISTRICT
COMMITTEE DESIGNATIONS & ASSIGNMENTS
AND APPOINTED ATTENDEES**

<p><u>STANDING ADVISORY COMMITTEES</u></p> <ol style="list-style-type: none"> 1. BOARD AGENDA 2. PUBLIC INFORMATION 	<p style="text-align: center;"><u>DIRECTORS</u></p> <p>LUCKMAN & COATES</p> <p>FULLER & LUCKMAN</p>
<p><u>AD HOC ADVISORY COMMITTEES</u></p> <ol style="list-style-type: none"> 1. JBWD MANAGEMENT COMPENSATION SCALES PROJECT 2. JBWD RECHARGE BASIN & PIPELINE PROJECT 3. JBWD HOSPITAL WASTEWATER PROJECT 4. JBWD TANK RESTORATION PROJECT 5. JBWD RULES & REGULATIONS UPDATE PROJECT 6. JBWD ADMINISTRATIVE CODE UPDATE PROJECT 	<p style="text-align: center;"><u>DIRECTORS</u></p> <p>LUCKMAN & COATES</p> <p>COATES & FULLER</p> <p>LUCKMAN & COATES</p> <p>WILSON & COATES</p> <p>FULLER & COATES</p> <p>FULLER & LUCKMAN</p>
<p style="text-align: center;"><u>APPOINTED ATTENDEES</u></p> <p style="text-align: center;"><u>ORGANIZATION</u></p> <ol style="list-style-type: none"> 1. MWA BOARD MEETINGS 2. MWA TECHNICAL ADVISORY COMMITTEE 3. MWA PIPELINE COMMITTEE 4. SBC LAFCO 5. ASBC SPECIAL DISTRICTS 	<p style="text-align: center;"><u>DIRECTORS</u></p> <p>Rotation of COATES, LUCKMAN, REYNOLDS, & FULLER</p> <p>LUCKMAN (Alternate: FULLER)</p> <p>COATES (Alternate: REYNOLDS)</p> <p>LUCKMAN (Alternate: FULLER)</p> <p>REYNOLDS</p>