



## MAY / 2022

**MARCH 2022 Residential Gallons Per Capita Water Use: 84.13.** *Note: Water savings data reflects water use from two months in the past. Also, during this drought "gallons per capita" will be the standard of "measure" for tracking our water conservation efforts. Soon, the State will determine how much water per person per day will be targeted.*



**OUR MISSION STATEMENT:**  
To provide, protect, and maintain Joshua Tree's water - our vital community resource.

### IN THIS ISSUE:

- Upcoming Events and Meetings
- May's Water Conservation Tip
- New JBWD District "Divisions"
- In Memorium: Kelly Stewart
- Careers in Water: Part 5
- Conserve Water Like a Desert Tortoise!
- In Case You Missed It
- Curious Minds Want To Know
- May's Farmers' Market: Meet Young Desert Tortoises *Live!*
- C.I.R.P. Update
- May Gardening Tips and Plant of the Month



### MAY'S WATER CONSERVATION TIP:

#### **HELPING YOUR TREES SURVIVE A DROUGHT**

As temperatures rise amid drought conditions in California, it's important to remember to take care of one of the most valuable resources in our community -- our trees.

Homeowners can neglect watering their trees when attempting to conserve water because they're worried about water waste. Because of this, trees that are dependent on regular watering can deteriorate or die.

While homeowners may think they're saving water, they're actually causing more harm. Not only can dead trees increase the threat of brush fires, it diminishes providing habitat for our desert wildlife.

Also, trees offer more benefits than just being beautiful: they reduce pollution,

### Upcoming Events and Meetings:

**Note: The District Office will be closed for customer assistance (phone/email) in observance of the Memorial Day Holiday on Monday, May 30th.**

*In the event of a water emergency, call 760.366.8438, day or night. Our crews are always on call to protect our water!*

- **Regular Board of Directors:** *Cancelled:* May 4th.
- **Regular Board of Directors:** Wednesday, May 18th at 5:30PM (Virtual). See website for Agenda

- Citizens Advisory Council:  
**Cancelled:** Tuesday, May 10th at  
6PM *Cancelled*

conserve water, prevent erosion and can even help save energy.

To learn more, visit: [Helping your trees survive a drought](#)

For other calendar items, visit: [www.jbwd.com](http://www.jbwd.com)

## JBWD "NEW" GEO POLITICAL MAP DIVISIONS

As required by State law, Joshua Basin Water District has realigned its area of service into five current "Divisions"--representing five elected Board Member seats who govern our Water District.



The task was daunting, as the law requires the governing body of each local jurisdiction to adopt new district boundaries after each federal census. Each District must reflect our varied demographics all while keeping the population numbers in each Division the same, or closely similar. The Board went above and beyond to consider and reflect our varied neighborhoods, major street divisions, and established communities. This process is carried out by a third-party consultant. The Board is presented with several acceptable options, of which they vote on (following a required public hearing).

The representative Board member of each Division can change with an election cycle--depending on if it is their term of service that is up for re election. JBWD's five member Board's terms rotates between election cycles, with two members up for reelection this November 2022, and three members whose terms expire in 2024. This alternating of terms allows for continuity of leadership over consecutive years.

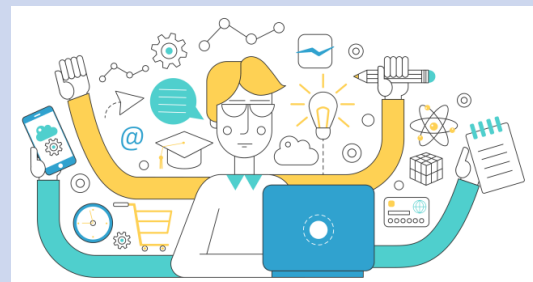
Once elected, all Board members serve all rate payers at large, and any of the five members may be addressed with concerns regardless of their assigned Division.

The District's current leadership team, their new Division, and year for reelection are as follows:

- Division One - Rebecca Unger Election seat expires: November 2022
- Division Two - Barbara Delph Election seat expires: November 2022
- Division Three - Jane Jarlsberg Election seat expires: November 2024
- Division Four - Tom Floen Election seat expires: November 2024
- Division Five - Stacy Doolittle Election seat expires: November 2024

To see your Division, go to: [NEW JBWD Geo Political Divisions](#)

## IN MEMORIAM





## CAREERS IN WATER

### PART 5 IN A SERIES

If you are considering a gratifying career in water, here are two websites that may help you imagine your place in this ever growing field of opportunity. Explore free webinars to help you learn some insights in this essential service industry, as well as, take a peak at courses you may wish to consider taking (tuition charges apply).

[American Water Works Association](#)

[Environmental Protection Agency](#)

Note: You'll find other websites with more information on water training, some offering free courses, or webinars at a cost.



Mr. Kelly Stewart, a 15 year well respected member of the JBWD family, passed away in April. Our deep heartfelt condolences to his family, and all who shared his gifts and skills throughout his years of service to our community. Kelly will truly be missed.

## Conserve Water Like A Desert Tortoise!



The desert tortoise is an amazing example of how nature conserves water. Unique unto itself in many ways, its true claim to fame is its ability to store and carry its own water (no wonder it moves so slow!) Did you know that a healthy adult tortoise, with water on board, can last as long as a year --or more-- with the water it carries? Pretty amazing, and inspirational at the same time.



How long can you keep water? How long can you keep stored in the event of a water emergency--in your home, your car, or place of business? Good questions to ponder and plan for if the tap water stopped.

**IMPORTANT:** If you are out and about, watch where you step as little hatchlings can appear like pathway rocks. Also, if you see a desert tortoise in danger (i.e., trying to cross a road) move it in the direction it is going, and keep it low to the ground while in motion to avoid scaring it. When a tortoise becomes frightened, it will release all its life saving water (defecating on you) in an attempt to lighten its load to escape. Leaving a dish of water behind for the tortoise to "refill" is futile, as it only trusts the water it gains from eating moist plants or water collected over soil from desert rains.



## IN CASE YOU MISSED IT

As many have discovered, it is harder and harder to find true native plants that thrive in our desert using very little water.

Late May begins the season where native plants start to go to seed. If you missed signing up to participate in our *May Wildcrafting 4-Part Course*, not all is lost!

Our Water Wise Demonstration Garden has the 12 basic steps on *Wildcrafting*, or how to: harvest, clean, germinate, and propagate native plants seeds.

To schedule a tour of the garden, where snap shots of all 12 signs can be taken, contact: [kjradnich@gmail.com](mailto:kjradnich@gmail.com).



## CURIOUS MINDS WANT TO KNOW:

**Often, at our Farmers' Market booth or on social media, we get good questions that others may be asking. Here's more of a sample:**

**Q: If I "bought" my water meter, why can JBWD remove or replace it at will? Don't they need my permission?**

**A:** Technically, you did not "buy" the actual water meter, but rather, the "right" to connect to the community water system. Therefore, you do not own it.

All meters are part of JBWD's infrastructure, and owned by JBWD.



## MAY AT OUR JBWD FARMERS' MARKET BOOTH

Joining our Market booth this month are two 3-4 year old Desert Tortoises who really know how to make every drop of water count. Come meet them *up close*, and wonder at these amazing creatures' ability to conserve water and survive in our hostile desert climate.

Tortoises are on loan from the

The Joshua Tree Farmers' Market is open Saturdays,

Joshua Tree Tortoise Rescue. Information on tortoise adoptions can also be obtained at JBWD's Market booth.

from 8AM until 1PM. JBWD's booth anchors the west end of the Market (by the JT Laundromat).

## Capital Improvement and Replacement Program: "C.I.R.P." UPDATE

*You're water dollar\$ at work*

Spring is a busy time of year for Morongo Basin residents, and JBWD crews are no exception! The following is a brief overview of what has been accomplished in *just one month*. With our crews on call 24/7, some of these activities are performed during weekend hours and in the middle of the night:

- **215** service orders (customers calling for help)
- **318** Dig Alerts (identifying water line locations to prevent accidental damage)
- **7** meters upgraded (from 3/4" inch to 1" inch)
- **11** meters replaced (pulling old meters off the system and replacing with new)
- **8** mainline leaks (these mainline leaks are huge pipes that feed the service lines)
- **23** service line leaks (lines that bring water right to your meters)
- **11** new services (yes--our community continues to grow!)



### **TILFORD PIPELINE REPLACEMENT PROJECT:**

Great progress has been realized with 30,000 feet of new pipeline installed, bringing this segment of our C.I.R.P. pipeline replacement program near to completion.

### **DISTRICT OFFICE REMODEL:**

Cost savings are realized as we use our in-house crews to continue remodeling our aged District Office facility (in between water system needs) and the efforts are proving to be rewarding. Some delays are due to back-orders on parts and components (i.e., our new ADA compliant entry doors).

### **WELL 14 UPDATE:**

The State Water Resource Control Board from the California Department of Water Resources finally arrived and inspected our new four-log system and refurbished Well 14--JBWD's largest well for the entire community's water system. We completed a highly scrutinized state inspection of Well 14. With great anticipation, we look to see Well 14 back online just in time for the high water use season--*summer*.

As we await the final formal document declaring permission to open the water system into our community water supply, we continue to test daily to confirm the safety and great quality of JBWD's Well 14 drinking water.

**KUDOS to our great staff!**



# DESERT-SMART GARDENING TIPS FOR APRIL

## May Watering Schedule: Before 9:00 AM --after 6:00 PM

Due to warmer weather, it is best to water during the early morning and late evening hours to reduce evaporation.

## This month in your Desert-Smart Landscape:

Rising temperatures cause changes in plants.

- As weather heats up, change watering schedule from mid-day to early morning or evening to minimize loss through evaporation.
- Maintain a good mulch of organic matter covering garden soil throughout the summer to hold in moisture
- Remove ("deadhead") spent flowers unless you want to collect seeds (such as from Penstemons) to stimulate repeat blooming

## May 2022 Plant of the Month

### Mojave Aster

*Xylorhiza tortifolia*

Plant Form: Perennial sub-shrub

Water Use: Very low

Mature Size: 1-2 ft. tall and wide

Exposure: Full sun

Bloom Time: Spring (March - May), Fall (October)

Native to: California, Arizona, Nevada, Utah

Hardiness: Cold Hardy to 10°F

Mojave Aster adds unexpected color to the normally harsh habitat where it grows naturally. In your garden, the long-stalked flower heads on this perennial sub-shrub hold two-inch-wide, yellow-centered, lavender-petaled flowers that are beautifully iridescent. After plants are established with regular water, they like a summer drought, but expect them to drop some leaves (they won't like summer water after established). Mojave Aster needs very good drainage of sandy, rocky, gravelly, dry soils. Either late summer rainfall or pruning can stimulate a second flowering in fall. Butterflies and other pollinators can't resist the flowers, but luckily this California native resists browsing by rabbits. Mojave Aster is lovely in borders, wildflower gardens, rock gardens, bee and butterfly gardens, dry washes, and as a companion plant to cacti and other xeric plants.



Alliance for Water  
Awareness and Conservation

For more information on low-water-use gardening,  
contact your local water provider or go to  
[www.hdawac.org](http://www.hdawac.org)

Photos © 2022 Robin Kobaly ~ Content © 2022 The Power of Plants ([www.PowerofPlants.com](http://www.PowerofPlants.com))  
Produced by The SummerTree Institute ([www.SummerTree.org](http://www.SummerTree.org))

Joshua Basin Water District |  
[www.jbwd.com](http://www.jbwd.com)



Joshua Basin Water District | 61750 Chollita Rd. , Joshua Tree, CA 92252

[Unsubscribe sjohnson@jbwd.com](mailto:sjohnson@jbwd.com)

[Update Profile](#) | [Constant Contact Data](#)  
[Notice](#)

Sent by [kjradnich@gmail.com](mailto:kjradnich@gmail.com) powered by



Try email marketing for free today!